



20 - 27 August | SAILING INSTRUCTIONS



CONTENTS

1. Rules	4
2. Prohibited Water	4
3. Responsibility	4
4. Regatta Office and Notice Board	4
5. Pennants, Boom Stickers, Hull Decals and Identification Numbers	5
6. Signals Made Ashore	5
7. Notices to Competitors	5
8. Schedule of Events	5
9. Class Flags	6
10. Courses and Marks of the Course	6
11. Race Committee Vessels	6
12. The Start	6
13. Recalls	9
14. Shortening the Course	9
15. Alternative Penalties	9
16. Yachts Not Finishing	9
17. The Finish	9
18. Time Limits	10
19. Protests	10
20. Mediation	10
21. Handicaps and Scoring	10
22. Safety	11
23. Radio Communication	11
24. Race Results	11
25. Prizes	11
APPENDIX "A" - Courses and Mark Descriptions	12
Island Passage Courses	12
Windward / Leeward Courses	22
Course Maps	23
Emergency Procedures and Communications	30
Tide Predictions	31
International Jury	31
Shallow Water Warning Buoy	31
MSQ Notice to Mariners	32
Aircraft on Approach to Hamilton	33
Sailors, Please Be Aware of Media Crafts	34
Aircraft are Hazardous to Yachts	34
Yachts are Hazardous to Aircraft	34

SAILING INSTRUCTIONS

1. Rules

- 1.1 The regatta will be governed by the rules as defined in the Racing Rules of Sailing (RRS) of World Sailing (WS), Special Regulations of Australian Sailing (AS), the 2016 IRC rule (parts A, B & C) where applicable including AS prescriptions, all as modified by these Sailing Instructions.
- 1.2 RRS 52 is amended to permit powered winches for boats over 14.0m LOA.
- 1.3 Boats not racing in a Rating Class shall request permission from the Race Committee to use movable and/or variable ballast for the purpose of increasing stability. Any such request must be accompanied by full details of the system involved, and any such system will be taken into account in establishing the yacht's handicap. Stored power may be used for the operation of movable ballast systems. RRS 51 and 52 are modified to the extent required by this paragraph.
- 1.4 Boats entered in Non-Spinnaker Class shall not carry spinnakers, but may use a spinnaker pole to pole out a headsail. Headsails shall be fully hanked, or attached to the forestay by means of a luff groove device.
- 1.5 Nothing in the Notice of Race or Sailing Instructions relieves a boat of her responsibility under civil law to comply with the International Regulations for Preventing Collisions at Sea or local regulations.
- 1.6 Between sunset and sunrise, when a boat cannot determine with certainty what tack the other boat is on, she shall keep clear of that boat. Competitors are reminded that part of the definition of "room" includes taking into account the existing conditions (including visibility).
- 1.7 A current or fully amended paper chart AUS252 shall be carried on board.
- 1.8 RRS 55 is amended adding the following sentence to the rule: 'However, discarding cotton, wool or any other biodegradable material when setting a sail is permitted.'
- 1.9 The owner and skipper of all boats shall ensure that no entities form unauthorised associations between themselves (and their products or services) and the event (otherwise known as "ambush marketing") or any "hijack signage" is carried out by or on behalf of themselves or their sponsors with reference to the event and that nothing else is done which might undermine the event, the rights of the event sponsor, or any other sponsor or participant in the event.
- 1.10 Before the first race of the championship, all Rating Class boats shall submit to the regatta office a declaration of all the sails carried on board for the duration of the regatta (IRC Rule 21.1.5(d)).
- 1.11 In accordance with rule 42(i), a boat may use her engine whilst racing:
 - (a) if she cannot manoeuvre safely, or
 - (b) is in danger of interfering with commercial traffic or aircraft operations, or
 - (c) has run aground, or
 - (d) is in imminent danger of running aground.The engine use must be logged and a declaration made at the race office as soon as possible after finishing.
The Race Committee will decide what penalty (if any) shall apply. This alters rule A5.

- 1.12 Boats shall not use 3G/4G Boosters or Signal Repeaters at any time including when not racing.
- 1.13 Boats shall not use boat tracking, photography, or video for commercial purposes without prior written approval of the organising authority.

2. Prohibited Water

During aircraft movements boats (whether racing or not) shall at all times keep clear of the designated Dent Passage Aircraft Flight Path Zone as shown on Maritime Safety Queensland Notice to Mariners 977 (Permanent) of 2010. During aircraft movements this area is deemed an obstruction for the purposes of Part 2 of the RRS.

During aircraft movements the race committee will have Marshal vessels in the vicinity of the designated Dent Passage Aircraft Flight Path Zone and all boats shall observe any directions given by the Marshal Boats or Race Committee vessels. Marshal vessels will be identified by displaying a flag with a black letter "M". Race Committee vessels will be identified by displaying a flag with a black letters "RC".

Boats shall maintain a radio watch on the race frequency when in the vicinity of Dent Passage. The Race Committee may give directions to boats by VHF radio on the race frequency.

Boats failing to comply with this sailing instruction may be protested by the Race Committee only. This alters RRS 60.1 and 60.3. The penalty for breaking this instruction shall be Disqualification Not Excludable (DNE).

See Maritime Safety Queensland Permanent Notice to Mariners 977 (P) of 2010 and the height restrictions from the end of the runway as noted.

3. Responsibility

- 3.1 All those taking part in these races do so at their own risk and responsibility. Neither Hamilton Island Yacht Club Inc. nor any other club or company connected with the organising of these races is responsible for the seaworthiness of a yacht whose entry is accepted, nor for the sufficiency or adequacy of its equipment. Owners shall accept full responsibility for the seaworthiness and safe navigation of their boats and competence of their crews.
- 3.2 Yacht owners, skippers and crew should be aware that there may be uncharted obstacles under the waters on which races are held. Such uncharted obstacles include reefs, bomboras and rocks which could be a danger to yachts and crews. Hamilton Island Yacht Club Inc. accepts no responsibility for any damage to or loss of any yacht or for injury to or death of any crew person which may occur as a result of a collision with any underwater obstacle. All participants compete in races at their own risk.
- 3.3 Attention is drawn to Fundamental Rule 4, which states "The responsibility for a boat's decision to participate in a race or to continue racing is hers alone".

4. Regatta Office and Notice Board

The Regatta Office will be located in the Hamilton Island Yacht Club (HIYC) building. The Regatta Notice Board will be in the near vicinity.

5. Pennants, Boom Stickers, Hull Decals and Identification Numbers

- 5.1 Pennants, boom stickers and hull decals may be provided by the event sponsors. If provided, pennants shall be flown from the backstay at all times whilst racing, boom stickers shall be attached to the boom and hull decals shall be attached to the topsides approximately one metre from the bow. Boats failing to comply with this may be protested by the Race Committee only. This alters RRS 60.1 and 60.3
- 5.2 Yachts that do not have sail numbers or have sails with conflicting sail numbers, shall display a bow number, which will be provided. The bow number shall be located on both sides of the hull forward of any sponsors decals. This amends RRS 77.

6. Signals Made Ashore

- 6.1 Signals made ashore will be displayed from the flag pole on the Hamilton Island Yacht Club deck.
- 6.2 When a signal is displayed over a class flag, it shall apply to that class only.

7. Notices to Competitors

- 7.1 Notices to competitors will be posted on the official notice board located at Hamilton Island Yacht Club and also on the electronic notice board on the event website.
- 7.2 Any change to Sailing Instructions made ashore will be posted at least one hour before the race affected and the Notice to Competitors will be signalled by the display of Code Flag "L" ashore.
- 7.3 Changes to the Sailing Instructions made afloat will be indicated by the display of Code Flag 3rd Substitute accompanied by two sound signals. The change will be communicated orally on the designated course VHF channel and/or in writing.

8. Schedule of Events

Date	Class	Event
Sunday 7th Aug	All Classes	Entries close
Friday 19th Aug	All Classes	Registration - 1300 hrs to 1700 hrs.
Saturday 20th Aug	All Classes	Registration - 1000 hrs to 1700 hrs.
Sunday 21st Aug	All Classes	Short Around-the-Islands race
Monday 22nd Aug	Rating Racing Divisions A & B	W/L Courses (up to 2 races)
	All other Classes	Short Around-the-Islands race
Tuesday 23rd Aug	Rating Racing Division A, Multihull Racing	Club Marine Classic Long race
	Rating Racing Division B, Racer/Cruiser, Rating Passage	Club Marine Classic Medium Distance race
	All other Classes	Short Around-the-Islands race
Wednesday 24th Aug	All Classes	Lay day - Shore side activities
Thursday 25th Aug	All Classes	Prix d'Elegance Parade 0900 - 1000
	Rating Racing Divisions A & B	W/L Courses (up to 2 races)
	All other Classes	Short Around-the-Islands race
Friday 26th Aug	Racer/Cruiser Class & Multihull Racing	1xW/L Course & Short Around-the-Islands race
	All Other Classes	Short Around-the-Islands race
Saturday 27th Aug	All Classes	Short Around-the-Islands race
	Presentation of Trophies	

The Race Committee may make changes to this schedule at any time.

9. Class Flags

Class	Class Flag	Backstay Flag
Rating Racing Division A	"1"	Numeral "1"
Rating Racing Division B	"2"	Numeral "2"
Rating Passage	"5"	Numeral "5"
Racer/Cruiser Division	"6"	Numeral "6"
Cruising Division 1	Pink	Pink
Cruising Division 2	Light Blue	Light Blue
Cruising Division 3	Fluro Yellow	Fluro Yellow
Cruising Division 4	Orange	Orange
Trailer Yachts	Purple	Purple
Non-Spinnaker Division 1	Grey	Grey
Non-Spinnaker Division 2	White	White
Multihull Racing	Gold	Gold
Multihull Cruising Division 1	Fluro Green	Fluro Green
Multihull Cruising Division 2	Black	Black

Boats shall fly the provided backstay flag above any event sponsors pennant whilst racing. It shall be flown from the backstay or conspicuously from the stern for boats without a backstay.

10. Courses and Marks of the Course

See appendix "A"

11. Race Committee Vessels

Race Committee vessels will display the HIYC burgee when on station.

12. The Start

12.1 Starting times

Sunday 21st August

Start Time	Class	Course	Starting Area	VHF
1000	Trailer Yacht	Island	Eastern	Ch 72
1005	Multihull Cruising Division 2	Island	Eastern	Ch 72
1010	Multihull Cruising Division 1	Island	Eastern	Ch 72
1015	Non-Spinnaker 2	Island	Eastern	Ch 72
1020	Non-Spinnaker 1	Island	Eastern	Ch 72
1025	Cruising Division 4	Island	Eastern	Ch 72
1030	Cruising Division 3	Island	Eastern	Ch 72
1035	Cruising Division 2	Island	Eastern	Ch 72

Start Time	Class	Course	Starting Area	VHF
1000	Racer/Cruiser	Island	Dent Passage	Ch 77
1005	Rating Racing Division B	Island	Dent Passage	Ch 77
1010	Rating Passage	Island	Dent Passage	Ch 77

Start Time	Class	Course	Starting Area	VHF
1040	Cruising Division 1	Island	Dent Passage	Ch 77
1045	Rating Racing Division A	Island	Dent Passage	Ch 77
1050	Multihull Racing	Island	Dent Passage	Ch 77

Monday 22nd August

Start Time	Class	Course	Starting Area	VHF
1045	Trailer Yacht	Island	Dent Passage	Ch 77
1050	Non-Spinnaker Division2	Island	Dent Passage	Ch 77
1055	Non-Spinnaker Division 1	Island	Dent Passage	Ch 77
1100	Multihulls Cruising Division 2	Island	Dent Passage	Ch 77
1105	Multihulls Cruising Division 1	Island	Dent Passage	Ch 77
1110	Cruising Division 4	Island	Dent Passage	Ch 77
1115	Cruising Division 3	Island	Dent Passage	Ch 77
1120	Cruising Division 2	Island	Dent Passage	Ch 77

Start Time	Class	Course	Starting Area	VHF
1115	Cruising Division 1	Island	Eastern	Ch 72
1120	Racer/Cruiser	Island	Eastern	Ch 72
1125	Rating Passage	Island	Eastern	Ch 72
1130	Multihull Racing	Island	Eastern	Ch 72

Start Time	Class	Course	Starting Area	VHF
1200	Rating Racing Division A	W/L (up to 2 races)	Eastern	Ch 72
1205	Rating Racing Division B	W/L (up to 2 races)	Eastern	Ch 72

For windward/leeward races subsequent races will be held as soon as practicable after the completion of the previous race.

Tuesday 23rd August

Start Time	Class	Course	Starting Area	VHF
0930	Rating Racing Division A	Island	Dent Passage	Ch 77 & 81
0935	Rating Racing Division B	Island	Dent Passage	Ch 77 & 81
0940	Rating Passage	Island	Dent Passage	Ch 77 & 81
0945	Racer/Cruiser	Island	Dent Passage	Ch 77 & 81
0950	Multihull Racing	Island	Dent Passage	Ch 77 & 81

Start Time	Class	Course	Starting Area	VHF
1115	Cruising Division 1	Island	Eastern	Ch 72
1120	Cruising Division 2	Island	Eastern	Ch 72
1125	Cruising Division 3	Island	Eastern	Ch 72
1130	Cruising Division 4	Island	Eastern	Ch 72
1135	Non-Spinnaker Division 1	Island	Eastern	Ch 72
1140	Non-Spinnaker Division 2	Island	Eastern	Ch 72
1145	Multihull Cruising Division 1	Island	Eastern	Ch 72
1155	Multihull Cruising Division 2	Island	Eastern	Ch 72
1200	Trailer Yacht	Island	Eastern	Ch 72

Wednesday 24th August

Lay Day all classes - Shore side activities

Thursday 25th August

Start Time	Class	Course	Starting Area	VHF
0900 - 1000	All Classes - Prix d'Elegance Parade		Dent Passage	Ch 77
1030	Trailer Yacht	Island	Dent Passage	Ch 77
1035	Multihull Cruising Division 2	Island	Dent Passage	Ch 77
1040	Multihull Cruising Division 1	Island	Dent Passage	Ch 77
1045	Non-Spinnaker Division 2	Island	Dent Passage	Ch 77
1050	Non-Spinnaker Division 1	Island	Dent Passage	Ch 77
1055	Cruising Division 4	Island	Dent Passage	Ch 77
1100	Cruising Division 3	Island	Dent Passage	Ch 77
1105	Cruising Division 2	Island	Dent Passage	Ch 77

Start Time	Class	Course	Starting Area	VHF
1055	Racer/Cruiser	Island	Eastern	Ch 72
1100	Rating Passage	Island	Eastern	Ch 72
1105	Cruising Division 1	Island	Eastern	Ch 72
1110	Multihull Racing	Island	Eastern	Ch 72

Start Time	Class	Course	Starting Area	VHF
1125	Rating Racing Division A	W/L (up to 2 races)	Eastern	Ch 72
1130	Rating Racing Division B	W/L (up to 2 races)	Eastern	Ch 72

For windward/leeward races subsequent races will be held as soon as practicable after the completion of the previous race.

Friday 26th August

Start Time	Class	Course	Starting Area	VHF
1045	Trailer Yacht	Island	Dent Passage	Ch 77
1050	Multihull Cruising Division 2	Island	Dent Passage	Ch 77
1055	Multihull Cruising Division 1	Island	Dent Passage	Ch 77
1100	Non-Spinnaker Division 2	Island	Dent Passage	Ch 77
1105	Non-Spinnaker Division 1	Island	Dent Passage	Ch 77
1110	Cruising Division 4	Island	Dent Passage	Ch 77
1115	Cruising Division 3	Island	Dent Passage	Ch 77
1120	Cruising Division 2	Island	Dent Passage	Ch 77
1125	Cruising Division 1	Island	Dent Passage	Ch 77
1130	Multihull Racing	Island	Dent Passage	Ch 77

Start Time	Class	Course	Starting Area	VHF
1100	Multihull Racing	1 x W/L & 1 x Island Race	Eastern	Ch 72
1105	Racer/Cruiser	1 x W/L & 1 x Island Race	Eastern	Ch 72

Start Time	Class	Course	Starting Area	VHF
1115	Rating Racing Division A	Island	Eastern	Ch 72
1120	Rating Racing Division B	Island	Eastern	Ch 72
1125	Rating Passage	Island	Eastern	Ch 72

For windward/leeward races subsequent races will be held as soon as practicable after the completion of the previous race.

Saturday 27th August

Start Time	Class	Course	Starting Area	VHF
1000	Trailer Yacht	Island	Dent Passage	Ch 77
1105	Multihull Cruising Division 2	Island	Dent Passage	Ch 77
1010	Multihull Cruising Division 1	Island	Dent Passage	Ch 77
1015	Non-Spinnaker Division 2	Island	Dent Passage	Ch 77
1020	Non-Spinnaker Division 1	Island	Dent Passage	Ch 77
1025	Cruising Division 4	Island	Dent Passage	Ch 77
1030	Cruising Division 3	Island	Dent Passage	Ch 77
1035	Cruising Division 2	Island	Dent Passage	Ch 77

Start Time	Class	Course	Starting Area	VHF
1110	Cruising Division 1	Island	Dent Passage	Ch 77
1115	Racer/Cruiser	Island	Dent Passage	Ch 77
1120	Rating Passage	Island	Dent Passage	Ch 77
1125	Rating Racing Division B	Island	Dent Passage	Ch 77
1130	Rating Racing Division A	Island	Dent Passage	Ch 77
1135	Multihull Racing	Island	Dent Passage	Ch 77

12.2 Starting lines

Dent Passage starting line. The starting line will be between the flagstaff on the Hamilton Island Yacht Club displaying the Hamilton Island Yacht Club burgee and a red and white AUDI inflatable buoy laid in Dent Passage.

Eastern starting line. The starting line will be laid in the area between Catseye Bay and Craig Point to the North-East of Hamilton Island, and will be between the signal mast displaying the Hamilton Island Yacht Club burgee on the Race Committee vessel, and a white AUDI inflatable buoy at the Port end.

Note: For Race Committee vessel starts, an inner limit buoy may be laid near the Race Committee vessel approximately on the starting line. Boats shall not pass between this buoy and the Race Committee vessel at any time. A breach of this SI is open to protest by the Race Committee only. This alters RRS 60.1 and 60.3.

13. Recalls

- 13.1 Following a General Recall the new start will be five (5) minutes after the recalled start.
One minute after the recalled start the First Substitute will be lowered, the class flag(s) for the class to be re-started will be hoisted along with the Preparatory Signal. (This changes RRS 29.2 and Race Signals "First Substitute")
- 13.2 Following a General Recall the start(s) for the following class(es) will be delayed accordingly.
- 13.3 In addition to the requirements of RRS 29, the Race Committee MAY call yachts on the designated course VHF channel.
- 13.4 A yacht signalled as OCS may, at the discretion of the Race Committee be given an elapsed time penalty of 5 minutes or greater by the Race Committee in lieu of returning to start correctly. If applied, this will be communicated by VHF or on the water by an RC vessel. This alters RRS 28.1.

14. Shortening the Course

Island Passage courses may be shortened at any part of the course. Yachts shall finish between the Race Committee vessel displaying Code Flag "S" and the inflatable mark moored nearby, or the nearest point of land if no mark is laid. This changes RRS 32 and Race Signals.

15. Alternative Penalties

For Windward / Leeward Courses W1 - W6 and all Multihull races, the Two-Turns penalty (RRS 44.1) is changed to a One Turn penalty.

16. Yachts Not Finishing

Yachts not finishing a race shall inform the Race Committee on the appropriate course VHF channel, or by calling the Regatta Office on 07 4946 8159.

17. The Finish

- 17.1 Yacht Club finish line. The finish line will be in Dent Passage and will be between the flagstaff on the Hamilton Island Yacht Club displaying the Hamilton Island Yacht Club burgee and a red and white AUDI inflatable buoy laid in Dent Passage. The finishing line will be illuminated at each end by blue flashing strobe lights. When crossing the finishing line boats shall illuminate her sail number or bow number and shall confirm her identify on the course VHF channel by radio.
- 17.2 Golf Course Jetty finish line. The finish line will be in Dent Passage and will be located to the south west of the Hamilton Island Airport runway. Boats will finish between the red and white AUDI buoy at the eastern end of the line and either a staff displaying an orange flag on a vessel anchored at the western end or if a finishing vessel is not on station, a flagstaff displaying an orange flag on the Dent Island Golf Course jetty (approx S 20° 21.30', E 148° 56.31').

- 17.3 Race Committee vessel finish line. The finish line will be in a similar position to the starting line or as designated in the course instructions and will be between the signal mast displaying the Hamilton Island Yacht Club burgee, on the Race Committee vessel and an inflatable buoy moored nearby.

18. Time Limits

18.1

Course	Time Limit
Club Marine Classic Long Distance Race	14 hours
Club Marine Classic Medium Distance Race	9 hours
Windward/Leeward Courses W1 - W6	2.5 hours or sunset whichever is earlier
All other courses	6.5 hours or sunset whichever is earlier

- 18.2 A boat still racing when her time limit expires will be scored points equal to the number of boats finishing within the time limit plus 25% of the number of starters in her class or division, rounded to the nearest whole number, but no more points than the number of starters. Such boats will be scored Time Limit Expired (TLE). This changes RRS 35, A4.2 and A5. Prior to the time limit expiring, the race committee may offer the score of TLE to boats still racing that may not make the time limit. This changes rule 28.1, 35, A4.2 and A5.

19. Protests

- 19.1 Protests will be heard by an International Jury constituted in accordance with RRS Appendix N. Decisions of the Jury will be final as provided in RRS 70.5.
- 19.2 RRS 60.3 (a) (1) is changed by deleting the word "serious".
- 19.3 Protests shall be delivered to the Regatta Office within 1.5 hours after the finish time of the last boat in her class (or in the last race of the day when multiple races are conducted) or if the race office is closed at night, by 0900 hours the next day.
- 19.4 Protests will be heard as soon as practicable after racing.
- 19.5 Notification of the details of protest hearings will be placed on the Official Notice Board as soon as possible to inform competitors where and when there is a hearing in which they are parties to a protest or named as a witness. These notices are deemed to fulfil the requirements of RRS 63.2. Representatives of boats, who are parties to hearings, and their witnesses, are advised to remain on call in the vicinity of the Regatta Office (or such other place as directed by the Jury Secretary).
- 19.6 RRS 66 is changed by adding: "On the last day of racing, a party to the hearing may ask for a reopening no later than 20 minutes after being informed of the decision. If the party was informed of the decision on the previous day it shall ask for a reopening no later than the time limit for protests."
- 19.7 In accordance with RRS 64.1 the Jury may award a disqualification or a scoring penalty which may include no penalty.

20. Mediation

- 20.1 For protests involving an alleged breach of a rule of RRS Part 2, a short mediation hearing may be held prior to a protest hearing. This changes RRS Part 5, Section B.
- 20.2 After a written protest is lodged, one representative from each boat will meet with the mediator. No witnesses will be permitted at this hearing.
- 20.3 A boat that accepts fault at a mediation hearing will be penalised by having her race score increased by 25% of the difference between the boats finishing score and the score for DSQ in her division or class, rounded to the nearest whole number. All other boats scores will remain the same. Once accepted, this decision is not subject to reopening or appeal. This alters RRS 63, 64.1, 66 and Appendix A.
- 20.4 The acceptance of a mediator's opinion cannot be grounds for redress or reopening. This changes RRS 60.1, 62 and 66.
- 20.5 The mediator may be a member of any subsequent Jury or may give evidence to the Jury.

21. Handicaps and Scoring

- 21.1 The scoring system shall be the Low Point System, RRS Appendix A except if there are five or less races sailed for a class or division then all races will count. One race will constitute a series in each Class. The number of scheduled races and handicap system in each Class is as follows:

Class	Scheduled # Races	Handicap System	Multiplier
Rating Racing Divs A & B,	8	IRC - Time Corrector (TCC) ORCi - Time-on-Time using the ToT Inshore rating.	
Rating Passage	6		
Racer/ Cruiser	7	Performance Handicap	Time Correction Factor (TCF)
Cruising Divs 1,2,3 & 4	6		
Non-Spinnaker Divs 1 & 2	6		
Multihull Cruising Divs 1 & 2	6		
Multihull Racing	7	Offshore Multihull Rule	OMR Rating
Trailer Yacht	6	Performance Handicap based on CBH	Time Correction Factor (TCF)

- 21.2 Results will be calculated by the application of the appropriate Class multiplier of elapsed time as shown in the table above. The boat with the lowest corrected time (after application of scoring penalties, if any) will be scored first and so on.

- 21.3 Performance Based Handicap TCF's for each yacht will be determined by the H.I.Y.C. Handicap Committee and may be altered at any time. The decision of the Handicap Committee or their representative on any handicap matter will be final and will not be grounds for requests for redress. This alters RRS 60.1 (b).

22. Safety

- 22.1 All Classes: The safety regulations will be YA Special Regulations Part 1 for Category 5 races including the dispensation as noted in Amendment to Notice-of-Race No.1.
- 22.2 A boat may be inspected at any time for compliance with Special Regulations or Rating Certificate.

23. Radio Communication

- 23.1 The Race Committee may broadcast the course to be sailed, names/sail numbers of OCS boats, and/ or other information of interest to competitors on the appropriate course VHF channel. Any such communications by the Race Committee will not be considered as Outside Help, this alters RRS 41. The Race Committee may also transmit course and other information by Short Message Service (SMS).
- Any failure of, or defect in, any such a broadcast will not be grounds for redress. This alters RRS 60.1 and 62
- 23.2 In accordance with SI 2 boats shall maintain a radio watch on the race frequency when in the vicinity of Dent Passage. The Race Committee may give directions to boats by VHF radio on the race frequency to clear any aircraft movements.
- 23.3 **Club Marine Classic Long Race**
- Mandatory position reporting radio schedules on VHF channel 81 will be conducted at 1803 hrs, 2103 hrs and 0003 hrs. Yachts still racing will be called in alphabetical order at these times. During the Club Marine Classic Long Race, the leading boat in each class and the last boat in each class are requested to call the Race Committee (VHF Ch 81) as they round each major mark of the course. This instruction may only be protested by the Race Committee.

24. Race Results

Results for each race will be posted on the Regatta Noticeboard as soon as practicable after each race. Results will also be posted on the event website. Copies of result sheets may be available from the Regatta Office.

25. Prizes

- 25.1 Daily Prizes will be awarded for 1st, 2nd and 3rd on corrected time in each race for each Class except if there are multiple races held for a Division or Class the day's totalled race scores will determine the winners. Daily Prizes will be presented on the main stage opposite the Marina Tavern at approximately 1730 hrs after racing each day.

- 25.2 Trophies will be awarded to 1st, 2nd and 3rd place in the overall pointscore for the Australian Yachting Championships in the following Classes:-

- Rating Racing Class Divisions A & B (IRC & ORCi)
- Rating Passage Class (IRC & ORCi)
- Cruiser/Racer Class (PHS)
- Racing Multihull Class (OMR)

Trophies will be awarded to 1st, 2nd and 3rd place in the overall pointscore in all other Classes.

- 25.3 In addition the following special awards will be made at the trophy presentation
- Gun Boat Trophy for the boat which has the most Line Honours.
 - The Leon O'Donoghue Trophy for "Boat of the Week"
 - The Prix d'Elegance for the best-presented boat and crew.
 - The Don McLean North Queensland Trophy for the best performing yacht whose home port is between Bundaberg & Port Douglas.
- (The Race Committee will determine the winners of these special awards using whatever criteria they deem appropriate.)
- 25.4 Trophies will be presented at a ceremony on the evening of Saturday 27th August 2016 in the Convention Centre, Hamilton Island.

APPENDIX "A" COURSES AND MARK DESCRIPTIONS

Island Passage Courses

A 1 For Dent Passage Starts, the course will be broadcast on the course VHF channel as soon as practicable after the warning signal for each Class. Courses will also be posted on the official notice board each day.

For on-water starts the course to be sailed by each class will be signalled by a Numeral Board displayed from the Race Committee vessel. The course to be sailed may also be broadcast on the designated course VHF Channel.

A 2 The following course descriptions list the order in which marks are to be passed and the side each mark is be rounded. Please note; marks denoted * are passing marks.

A 3 The approximate position given is the pinnacle of the island or rock designated as a mark of the course. Laid marks will be red and white AUDI cube inflatable buoys.

Club Marine Classic Long Race - Rating Racing Class A and Multihull Racing

51.4 nm approx

COURSE MARK	MARK DESCRIPTION	REQUIRED SIDE
Starting line	Dent Passage in a northerly direction	
Dent Island	Approx S 20° 20.75', E 148° 55.85'	Port
Denman Island	Approx S 20° 16.93' E 148° 50.98'	Port
Dent Island	Approx S 20° 20.75', E 148° 55.85'	Port
Pentecost Island	Approx S 20° 23.81', E 149° 01.79'	Starboard
Comston Island	Approx S 20° 27.82', E 149° 06.33'	Port
Isolated Rock	Approx S 20° 24.35', E 149° 00.39'	Port
Ann Island	Approx S 20° 25.22', E 149° 00.95'	Starboard
Spitfire Rock mark	Approx S 20° 28.70', E 149° 01.60'	Starboard
Dent Island*	Approx S 20° 20.75', E 148° 55.85'	Port
Finishing Line	Dent Passage in a northerly direction	

Club Marine Classic Medium Distance Race - Racer/Cruiser, Rating Racing Class B & Rating Passage

34.4 nm approx

COURSE MARK	MARK DESCRIPTION	REQUIRED SIDE
Starting line	Dent Passage in a northerly direction	
Dent Island	Approx S 20° 20.75', E 148° 55.85'	Port
Denman Island	Approx S 20° 16.93' E 148° 50.98'	Port
Dent Island	Approx S 20° 20.75', E 148° 55.85'	Port
Pentecost Island	Approx S 20° 23.81', E 149° 01.79'	Starboard
Isolated Rock	Approx S 20° 24.35', E 149° 00.39'	Port
Ann Island	Approx S 20° 25.22', E 149° 00.95'	Starboard
Sidney Island	Approx S 20° 26.92', E 149° 00.56'	Starboard
Dent Island*	Approx S 20° 20.75', E 148° 55.85'	Port
Finishing Line	Dent Passage in a northerly direction	

All other races use the following General Courses

Course 1

18.1 nm approx

COURSE MARK	MARK DESCRIPTION	REQUIRED SIDE
Starting line	Dent Passage in a northerly direction	
Dent Island	Approx S 20° 20.75', E 148° 55.85'	Port
Pentecost Island	Approx S 20° 23.81', E 149° 01.79'	Starboard
Dent Island*	Approx S 20° 20.75', E 148° 55.85'	Port
Finishing Line	Dent Passage in a northerly direction	

Course 2

21.3 nm approx

COURSE MARK	MARK DESCRIPTION	REQUIRED SIDE
Starting line	Dent Passage in a northerly direction	
Dent Island	Approx S 20° 20.75', E 148° 55.85'	Port
Pentecost Island	Approx S 20° 23.81', E 149° 01.79'	Starboard
Isolated Rock	Approx S 20° 24.35', E 149° 00.39'	Port
Ann Island	Approx S 20° 25.22', E 149° 00.95'	Starboard
Cole Island	Approx S 20° 25.51', E 149° 00.45'	Starboard
Dent Island*	Approx S 20° 20.75', E 148° 55.85'	Port
Finishing Line	Dent Passage in a northerly direction	

Course 3

27.1 nm approx

COURSE MARK	MARK DESCRIPTION	REQUIRED SIDE
Starting line	Dent Passage in a northerly direction	
Dent Island	Approx S 20° 20.75', E 148° 55.85'	Port
Pentecost Island	Approx S 20° 23.81', E 149° 01.79'	Starboard
Isolated Rock	Approx S 20° 24.35', E 149° 00.39'	Port
Ann Island	Approx S 20° 25.22', E 149° 00.95'	Starboard
Spitfire Rock mark	Approx S 20° 28.70', E 149° 01.40'	Starboard
Dent Island*	Approx S 20° 20.75', E 148° 55.85'	Port
Finishing Line	Dent Passage in a northerly direction	

Course 4

14.2 nm approx

COURSE MARK	MARK DESCRIPTION	REQUIRED SIDE
Starting line	Eastern Starting Line	
Laid Mark	Approx 1.75 nm on bearing given from Committee Vessel	Starboard
Isolated Rock	Approx S 20° 24.35', E 149° 00.39'	Port
Ann Island	Approx S 20° 25.22', E 149° 00.95'	Starboard
Cole Island	Approx S 20° 25.51', E 149° 00.45'	Starboard
Dent Island*	Approx S 20° 20.75', E 148° 55.85'	Port
Finishing Line	Dent Passage in a northerly direction	

Course 5

22.1 nm approx

COURSE MARK	MARK DESCRIPTION	REQUIRED SIDE
Starting line	Eastern Starting Line	
Laid Mark	Approx 1.75 nm on bearing given from Committee Vessel	Starboard
Isolated Rock	Approx S 20° 24.35', E 149° 00.39'	Port
Ann Island	Approx S 20° 25.22', E 149° 00.95'	Starboard
Spitfire Rock Mark	Approx S 20° 28.70', E 149° 01.60'	Starboard
Dent Island*	Approx S 20° 20.75', E 148° 55.85'	Port
Finishing Line	Dent Passage in a northerly direction	

Course 6

25.4 nm approx

COURSE MARK	MARK DESCRIPTION	REQUIRED SIDE
Starting line	Eastern Starting Line	
Baynham Island	Approx S 20° 26.17', E 149° 06.16'	Port
Lindeman Island	Approx S 20° 26.74', E 149° 02.78'	Port
Sidney Island	Approx S 20° 26.92', E 149° 00.56'	Port
Dent Island*	Approx S 20° 20.75', E 148° 55.85'	Port
Finishing Line	Dent Passage in a northerly direction	

Course 7

17.5 nm approx

COURSE MARK	MARK DESCRIPTION	REQUIRED SIDE
Starting line	Dent Passage in a northerly direction	
Dent Island	Approx S 20° 20.75', E 148° 55.85'	Port
White Rock	Approx S 20° 18.09', E 148° 48.61'	Starboard
Denman Island	Approx S 20° 16.93' E 148° 50.98'	Starboard
Dent Island	Approx S 20° 20.75', E 148° 55.85'	Starboard
Dent Laid Mark	Approx S 20° 20.36', E 148° 56.51'	Starboard
Finishing Line	Dent Passage in a southerly direction	

Course 8

21.6 nm approx

COURSE MARK	MARK DESCRIPTION	REQUIRED SIDE
Starting line	Dent Passage in a northerly direction	
Dent Island	Approx S 20° 20.75', E 148° 55.85'	Port
Pine Island	Approx S 20° 22.46', E 148° 53.44'	Starboard
White Rock	Approx S 20° 18.09', E 148° 48.61'	Starboard
Denman Island	Approx S 20° 16.93' E 148° 50.98'	Starboard
Dent Island	Approx S 20° 20.75', E 148° 55.85'	Starboard
Dent Laid Mark	Approx S 20° 20.36', E 148° 56.51'	Starboard
Finishing Line	Dent Passage in a southerly direction	

Course 9

25.6 nm approx

COURSE MARK	MARK DESCRIPTION	REQUIRED SIDE
Starting line	Dent Passage in a northerly direction	
Dent Island	Approx S 20° 20.75', E 148° 55.85'	Port
Pine Island	Approx S 20° 22.46', E 148° 53.44'	Starboard
Denman Island	Approx S 20° 16.93' E 148° 50.98'	Starboard
Pine Island	Approx S 20° 22.46', E 148° 53.44'	Starboard
Dent Island	Approx S 20° 20.75', E 148° 55.85'	Starboard
Dent Mark	Approx S 20° 20.36, E 148° 56.51'	Starboard
Finishing Line	Dent Passage in a southerly direction	

Course 10

13.6 nm approx

COURSE MARK	MARK DESCRIPTION	REQUIRED SIDE
Starting line	Dent Passage in a northerly direction	
Henning Island	Approx S 20° 19.18' E 148° 55.69'	Starboard
Yellow Special Mark	Approx S 20° 17.83', E 148° 55.00'	Starboard
Yellow Special Mark	Approx S 20° 18.80', E 148° 56.05'	Starboard
Dent Laid Mark	Approx S 20° 20.36', E 148° 56.51'	Starboard
Henning Island	Approx S 20° 19.18' E 148° 55.69'	Starboard
Yellow Special Mark	Approx S 20° 17.83', E 148° 55.00'	Starboard
Yellow Special Mark	Approx S 20° 18.80', E 148° 56.05'	Starboard
Dent Laid Mark*	Approx S 20° 20.36', E 148° 56.51'	Starboard
Finishing Line	Dent Passage in a southerly direction	

Course 11

18.7 nm approx

COURSE MARK	MARK DESCRIPTION	REQUIRED SIDE
Starting line	Dent Passage in a northerly direction	
Henning Island	Approx S 20° 19.18' E 148° 55.69'	Starboard
Yellow Special Mark	Approx S 20° 17.83', E 148° 55.00'	Starboard
Yellow Special Mark	Approx S 20° 18.80', E 148° 56.05'	Starboard
Dungarra Island	Approx S 20° 21.53', E 148° 59.81'	Starboard
Dent Island	Approx S 20° 20.75', E 148° 55.85'	Starboard
Dent Laid Mark	Approx S 20° 20.36', E 148° 56.51'	Starboard
Finishing Line	Dent Passage in a southerly direction	

Course 12

24.2 nm approx

COURSE MARK	MARK DESCRIPTION	REQUIRED SIDE
Starting line	Dent Passage in a northerly direction	
Henning Island	Approx S 20° 19.18', E 148° 55.69'	Starboard
Yellow Special Mark	Approx S 20° 17.83', E 148° 55.00'	Starboard
Yellow Special Mark	Approx S 20° 18.80', E 148° 56.05'	Starboard
Dungarra Island	Approx S 20° 21.53', E 148° 59.81'	Starboard
Ann Island	Approx S 20° 25.22', E 149° 00.95'	Starboard
Cole Island	Approx S 20° 25.51', E 149° 00.45'	Starboard
Dent Island	Approx S 20° 20.75', E 148° 55.85'	Starboard
Dent Laid Mark	Approx S 20° 20.36', E 148° 56.51'	Starboard
Finishing Line	Dent Passage in a southerly direction	

Course 13

20.7 nm approx

COURSE MARK	MARK DESCRIPTION	REQUIRED SIDE
Starting line	Eastern Starting Line	
Laid Mark	Approx 1.75 nm on bearing given from Committee Vessel	As advised
Isolated Rock	Approx S 20° 24.35', E 149° 00.39'	Port
Ann Island	Approx S 20° 25.22', E 149° 00.95'	Starboard
Cole Island	Approx S 20° 25.51', E 149° 00.45'	Starboard
Pine Island	Approx S 20° 22.46', E 148° 53.44'	Starboard
Dent Island	Approx S 20° 20.75', E 148° 55.85'	Starboard
Dent Laid Mark	Approx S 20° 20.36', E 148° 56.51'	Starboard
Finishing Line	Dent Passage in a southerly direction	

Course 14

25.8 nm approx

COURSE MARK	MARK DESCRIPTION	REQUIRED SIDE
Starting line	Eastern Starting Line	
Laid Mark	Approx 1.75 nm on bearing given from Committee Vessel	As advised
Isolated Rock	Approx S 20° 24.35', E 149° 00.39'	Port
Ann Island	Approx S 20° 25.22', E 149° 00.95'	Starboard
Cole Island	Approx S 20° 25.51', E 149° 00.45'	Starboard
Pine Island	Approx S 20° 22.46', E 148° 53.44'	Starboard
Spitfire Rock Mark	Approx S 20° 28.70', E 149° 01.60'	Starboard
Dent Island	Approx S 20° 20.75', E 148° 55.85'	Starboard
Dent Laid Mark	Approx S 20° 20.36', E 148° 56.51'	Starboard
Finishing Line	Dent Passage in a southerly direction	

Course 15

25.8 nm approx

COURSE MARK	MARK DESCRIPTION	REQUIRED SIDE
Starting line	Eastern Starting Line	
Laid Mark	Approx 1.75 nm on bearing given from Committee Vessel	As advised
Isolated Rock	Approx S 20° 24.35', E 149° 00.39'	Port
Ann Island	Approx S 20° 25.22', E 149° 00.95'	Starboard
Cole Island	Approx S 20° 25.51', E 149° 00.45'	Starboard
White Rock	Approx S 20° 18.09', E 148° 48.61'	Starboard
Denman Island	Approx S 20° 16.93' E 148° 50.98'	Starboard
Dent Island	Approx S 20° 20.75', E 148° 55.85'	Starboard
Dent Laid Mark	Approx S 20° 20.36', E 148° 56.51'	Starboard
Finishing Line	Dent Passage in a southerly direction	

Course 16

27.4 nm approx

COURSE MARK	MARK DESCRIPTION	REQUIRED SIDE
Starting line	Eastern Starting Line	
Laid Mark	Approx 1.75 nm on bearing given from Committee Vessel	As advised
Isolated Rock	Approx S 20° 24.35', E 149° 00.39'	Port
Ann Island	Approx S 20° 25.22', E 149° 00.95'	Starboard
Cole Island	Approx S 20° 25.51', E 149° 00.45'	Starboard
Denman Island	Approx S 20° 16.93' E 148° 50.98'	Starboard
Dent Island	Approx S 20° 20.75', E 148° 55.85'	Starboard
Dent Laid Mark*	Approx S 20° 20.36', E 148° 56.51'	Starboard
Finishing Line	Dent Passage in a southerly direction	

Course 17

23.6 nm approx

COURSE MARK	MARK DESCRIPTION	REQUIRED SIDE
Starting line	Eastern Starting Line	
Laid Mark	Approx 1.75 nm on bearing given from Committee Vessel	As advised
Pentecost Island	Approx S 20° 23.81', E 149° 01.79'	Starboard
Dent Island	Approx S 20° 20.75', E 148° 55.85'	Starboard
Henning Island	Approx S 20° 19.18' E 148° 55.69'	Starboard
Yellow Special Mark	Approx S 20° 17.83', E 148° 55.00'	Starboard
Yellow Special Mark	Approx S 20° 18.77', E 148° 56.05'	Starboard
Dent Laid Mark	Approx S 20° 20.36', E 148° 56.51'	Starboard
Finishing Line	Dent Passage in a southerly direction	

Course 18

12.4 nm approx

COURSE MARK	MARK DESCRIPTION	REQUIRED SIDE
Starting line	Dent Passage in a northerly direction	
Dent Island	Approx S 20° 20.75', E 148° 55.85'	Port
Pine Island	Approx S 20° 22.46', E 148° 53.44'	Port
Dent Laid Mark	Approx S 20° 20.36', E 148° 56.51'	Starboard
Finishing Line	Dent Passage in a southerly direction	

Course 19

24.9 nm approx

COURSE MARK	MARK DESCRIPTION	REQUIRED SIDE
Starting line	Dent Passage in a northerly direction	
Dent Island	Approx S 20° 20.75', E 148° 55.85'	Port
Pine Island	Approx S 20° 22.46', E 148° 53.44'	Port
Pentecost Island	Approx S 20° 23.81', E 149° 01.79'	Port
Dent Island	Approx S 20° 20.75', E 148° 55.85'	Starboard
Dent Laid Mark	Approx S 20° 20.36', E 148° 56.51'	Starboard
Finishing Line	Dent Passage in a southerly direction	

Course 20

28.3nm approx

COURSE MARK	MARK DESCRIPTION	REQUIRED SIDE
Starting line	Dent Passage in a northerly direction	
Dent Island	Approx S 20° 20.75', E 148° 55.85'	Port
Pine Island	Approx S 20° 22.46', E 148° 53.44'	Port
Sidney Island	Approx S 20° 26.92', E 149° 00.56'	Port
Pentecost Island	Approx S 20° 23.81', E 149° 01.79'	Port
Dent Island	Approx S 20° 20.75', E 148° 55.85'	Starboard
Dent Laid Mark	Approx S 20° 20.36', E 148° 56.51'	Starboard
Finishing Line	Dent Passage in a southerly direction	

Course 21

20.1 nm approx

COURSE MARK	MARK DESCRIPTION	REQUIRED SIDE
Starting line	Dent Passage in a northerly direction	
Dent Island	Approx S 20° 20.75', E 148° 55.85'	Port
Pentecost Island	Approx S 20° 23.81', E 149° 01.79'	Starboard
Dent Island	Approx S 20° 20.75', E 148° 55.85'	Starboard
Dent Laid Mark	Approx S 20° 20.36', E 148° 56.51'	Starboard
Finishing Line	Dent Passage in a southerly direction	

Course 22

15.3 nm approx

COURSE MARK	MARK DESCRIPTION	REQUIRED SIDE
Starting line	Dent Passage in a northerly direction	
Denman Island	Approx. S 20° 16.93' E 148° 50.98'	Starboard
Dent Island	Approx S 20° 20.75', E 148° 55.85'	Starboard
Dent Laid Mark	Approx S 20° 20.36', E 148° 56.51'	Starboard
Finishing Line	Dent Passage in a southerly direction	

Course 23

15.5 nm approx

COURSE MARK	MARK DESCRIPTION	REQUIRED SIDE
Starting line	Dent Passage in a northerly direction	
White Rock	Approx S 20° 18.09', E 148° 48.61'	Starboard
Dent Island	Approx S 20° 20.75', E 148° 55.85'	Starboard
Dent Laid Mark	Approx S 20° 20.36', E 148° 56.51'	Starboard
Finishing Line	Dent Passage in a southerly direction	

Course 24

24.0 nm approx

COURSE MARK	MARK DESCRIPTION	REQUIRED SIDE
Starting line	Eastern Starting Line	
Laid Mark	Approx 1.75 nm on bearing given from Committee Vessel	As advised
Isolated Rock	Approx S 20° 24.35', E 149° 00.39'	Port
Ann Island	Approx S 20° 25.22', E 149° 00.95'	Starboard
Sidney Island	Approx S 20° 26.92', E 149° 00.56'	Starboard
Pine Island	Approx S 20° 22.46', E 148° 53.44'	Starboard
Dent Island	Approx S 20° 20.75', E 148° 55.85'	Port
Finishing Line	Dent Passage in a northerly direction	

Course 25

26.5 nm approx

COURSE MARK	MARK DESCRIPTION	REQUIRED SIDE
Starting line	Eastern Starting Line	
Laid Mark	Approx 1.75 nm on bearing given from Committee Vessel	As advised
Isolated Rock	Approx S 20° 24.35', E 149° 00.39'	Port
Ann Island	Approx S 20° 25.22', E 149° 00.95'	Starboard
Spitfire mark	Approx S 20° 28.70', E 149° 01.40'	Starboard
Pine Island	Approx S 20° 22.46', E 148° 53.44'	Starboard
Dent Island	Approx S 20° 20.75', E 148° 55.85'	Port
Finishing Line	Dent Passage in a northerly direction	

Course 26

18.2 nm approx

COURSE MARK	MARK DESCRIPTION	REQUIRED SIDE
Starting line	Dent Passage in a northerly direction	
Dent Island	Approx S 20° 20.75', E 148° 55.85'	Port
Isolated Rock	Approx S 20° 24.35', E 149° 00.39'	Port
Either		
Dent Island	Approx S 20° 20.75', E 148° 55.85'	Starboard
Dent Laid Mark	Approx S 20° 20.36', E 148° 56.51'	Starboard
Or		
Hamilton Island	Approx S 20° 20.98', E 148° 58.46'	Port
Dent Laid Mark*	Approx S 20° 20.36', E 148° 56.51'	Starboard
Then		
Finishing Line	Dent Passage in a southerly direction	

Course 27

22.3 nm approx

COURSE MARK	MARK DESCRIPTION	REQUIRED SIDE
Starting line	Dent Passage in a northerly direction	
Dent Island	Approx S 20° 20.75', E 148° 55.85'	Port
Sidney Island	Approx S 20° 26.92', E 149° 00.56'	Port
Either		
Dent Island	Approx S 20° 20.75', E 148° 55.85'	Starboard
Dent Laid Mark	Approx S 20° 20.36', E 148° 56.51'	Starboard
Or		
Hamilton Island	Approx S 20° 20.98', E 148° 58.46'	Port
Dent Laid Mark*	Approx S 20° 20.36', E 148° 56.51'	Starboard
Then		
Finishing Line	Dent Passage in a southerly direction	

Course 28

13.3 nm approx

COURSE MARK	MARK DESCRIPTION	REQUIRED SIDE
Starting line	Dent Passage in a northerly direction	
Plum Pudding Island	Approx S 20° 20.06', E 148° 56.32'	Port
Yellow Special Mark	Approx S 20° 18.77', E 148° 56.05'	Starboard
Hamilton Island	Approx S 20° 21.19', E 148° 58.43'	Starboard
Dent Island	Approx S 20° 20.75', E 148° 55.85'	Starboard
Dent Laid Mark	Approx S 20° 20.36', E 148° 56.51'	Starboard
Finishing Line	Dent Passage in a southerly direction	

Course 29

25 nm approx

COURSE MARK	MARK DESCRIPTION	REQUIRED SIDE
Starting line	Dent Passage in a northerly direction	
Dent Island	Approx S 20° 20.75', E 148° 55.85'	Port
Denman Island	Approx S 20° 16.93', E 148° 50.98'	Starboard
Yellow Special Mark	Approx S 20° 17.83', E 148° 55.00'	Starboard
Yellow Special Mark	Approx S 20° 18.80', E 148° 56.05'	Starboard
Dungarra Island	Approx S 20° 21.53', E 148° 59.81'	Starboard
Hamilton Island	Approx S 20° 21.19', E 148° 58.43'	Starboard
Dent Island	Approx S 20° 20.75', E 148° 55.85'	Starboard
Dent Laid Mark	Approx S 20° 20.36', E 148° 56.51'	Starboard
Finishing Line	Dent Passage in a southerly direction	

Course 30

25 nm approx

COURSE MARK	MARK DESCRIPTION	REQUIRED SIDE
Starting line	Eastern Start Line	
Lindeman Island	Approx S 20° 26.74', E 149° 02.78'	Starboard
Spitfire Rock mark	Approx S 20° 28.70', E 149° 01.60'	Starboard
Dent Island*	Approx S 20° 20.75', E 148° 55.85'	Port
Finishing Line	Dent Passage in a northerly direction	

Course 31

23.3 nm approx

COURSE MARK	MARK DESCRIPTION	REQUIRED SIDE
Starting line	Dent Passage in a northerly direction	
South Molle Island	Approx S 20° 16.47' E 148° 50.24'	Starboard
Daydream Island	Approx S 20° 15.44' E 148° 48.86'	Starboard
North Molle Island	Approx S 20° 13.62' E 148° 49.29'	Starboard
Henning Island*	Approx S 20° 19.18' E 148° 55.69'	Port
Dent Laid Mark	Approx S 20° 20.36', E 148° 56.51'	Starboard
Finishing Line	Dent Passage in a southerly direction	

Course 32

22.5 nm approx

COURSE MARK	MARK DESCRIPTION	REQUIRED SIDE
Starting line	Dent Passage in a northerly direction	
Dent Island	Approx S 20° 20.75', E 148° 55.85'	Port
Lindeman Island	Approx S 20° 26.74', E 149° 02.78'	Starboard
Spitfire Rock mark	Approx S 20° 28.70', E 149° 01.60'	Starboard
Dent Island*	Approx S 20° 20.75', E 148° 55.85'	Port
Finishing Line	Dent Passage in a northerly direction	

Course 33

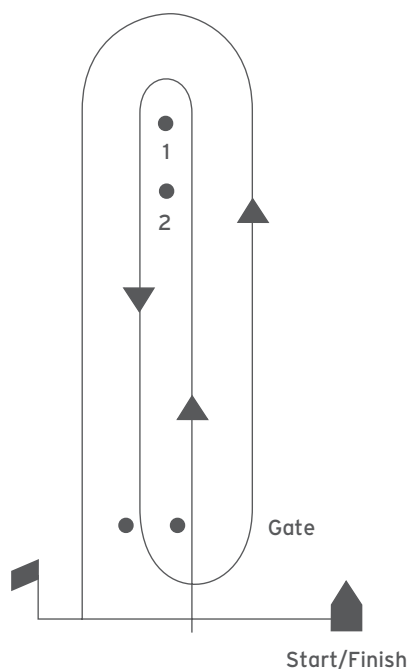
24.0 nm approx

COURSE MARK	MARK DESCRIPTION	REQUIRED SIDE
Starting line	Eastern Starting Line	
Laid Mark	Approx 1.75 nm on bearing given from Committee Vessel	As advised
Cole Island	Approx S 20° 25.51', E 149° 00.45'	Port
Sidney Island	Approx S 20° 26.92', E 149° 00.56'	Port
Pentecost Island	Approx S 20° 23.81', E 149° 01.79'	Port
Perseverance Island	Approx S 20° 21.32', E 148° 59.46'	Starboard
Dungarra Island	Approx S 20° 21.53', E 148° 59.81'	Starboard
Hamilton Island	Approx S 20° 21.19', E 148° 58.43'	Starboard
Finishing Line	Dent Passage in a northerly direction	

Windward / Leeward Courses

- A 4 The following course descriptions lists the order in which marks are to be passed and the side each mark is be rounded.
- A 5 The course to be sailed for each class will be signalled by a Numeral Board displayed from the committee vessel. The course to be sailed may also be broadcast on the designated course VHF Channel.
- A 6 A board displaying the approximate compass bearing from the committee vessel to Mark 1 and to Mark 2 will be displayed from the committee vessel.
- A 7 Mark 1 and Mark 2 will be laid to windward of the starting line.
The Gate will be laid approximately 50 metres to windward of the starting line. (Note: The Gate may be laid after the starting signal).
- A 8 All Marks to PORT except the Gate. Either Gate marks may be rounded to port or to starboard after passing through the gate from the direction of the last mark. If only one Gate mark is set, yachts shall round that mark to port.
- A 9 For a change of course direction or length of one leg the Race Committee will move the original mark (or marks or finishing line) or will lay a new mark (or marks) identical to the original at the new position. Any subsequent marks may be relocated to maintain the original course configuration.
- A.10 Mark 2 will not be laid if not required.

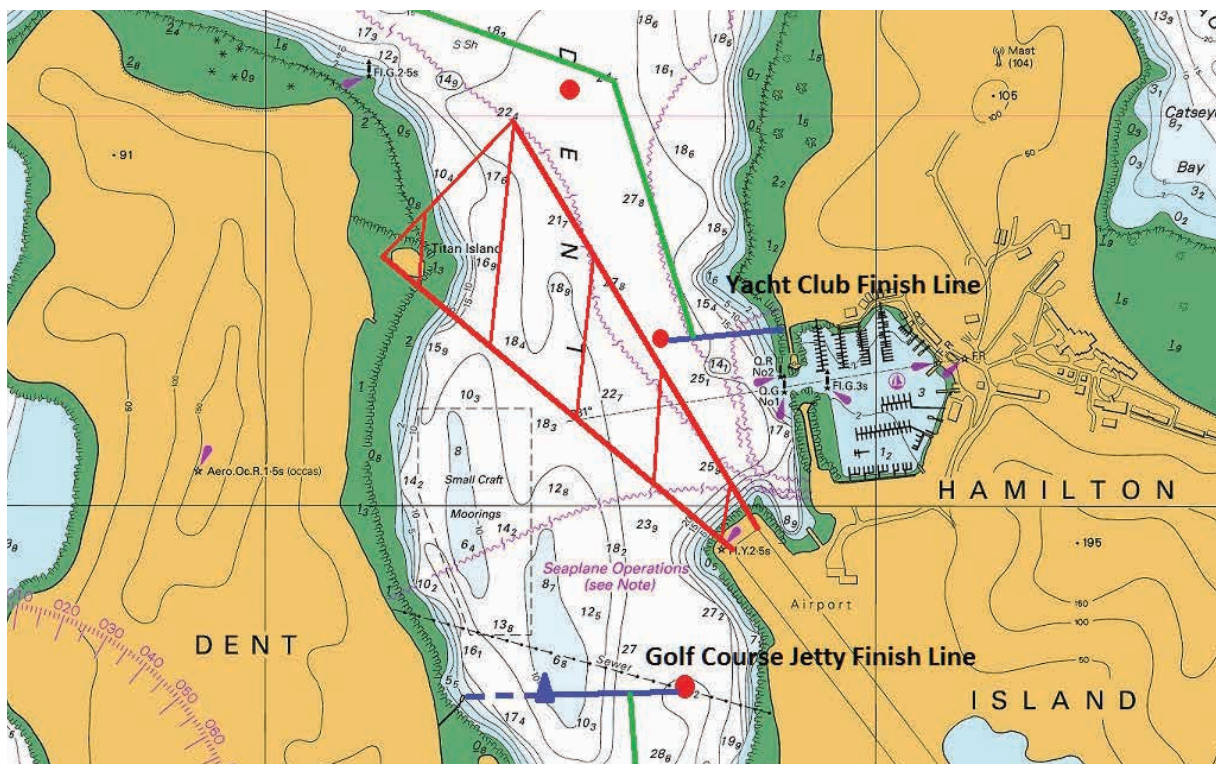
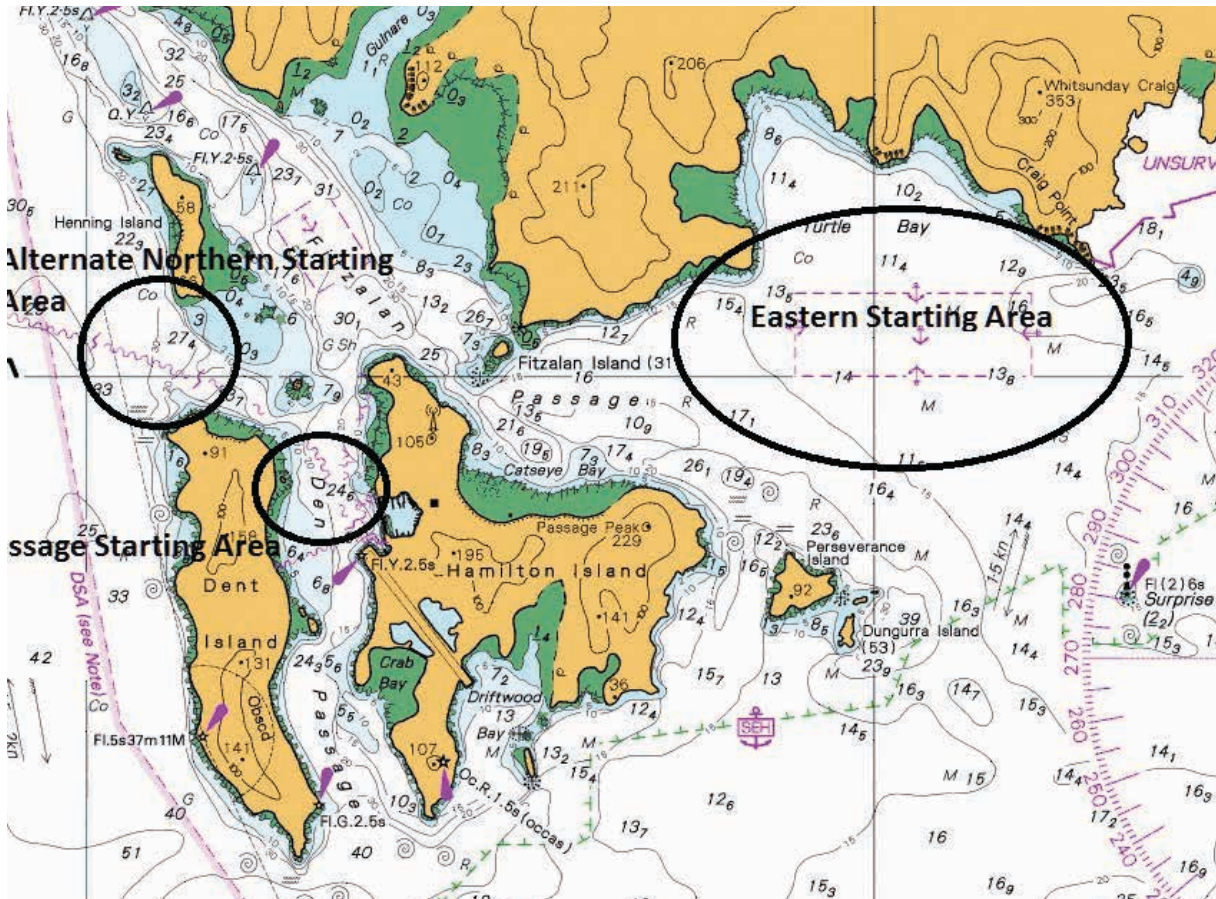
COURSE MARK	MARK DESCRIPTION
Start / Finish Mark	Yellow cylindrical inflatable buoy
Mark 1	Red & white AUDI cube shaped inflatable buoy
Mark 2	Yellow cylindrical inflatable buoy
Gate	Red & white AUDI cube shaped inflatable buoys



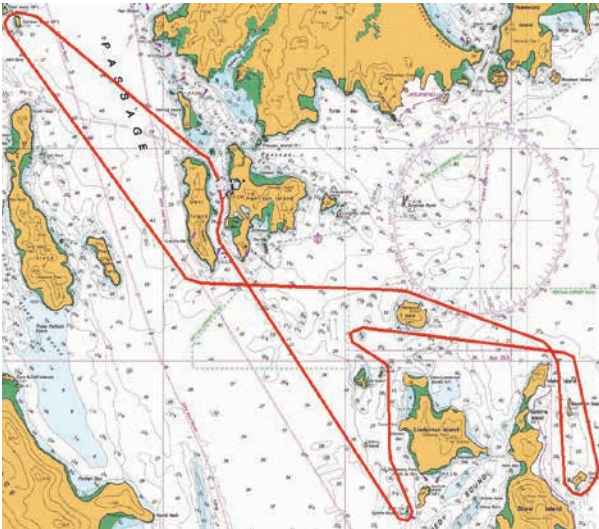
COURSE SIGNAL	COURSE CONFIGURATION
W1	Start - 1 - Finish
W2	Start - 1 - Gate - 1 - Finish
W3	Start - 1 - Gate - 1 - Gate - 1 - Finish
W4	Start - 2 - Finish
W5	Start - 2 - Gate - 2 - Finish
W6	Start - 2 - Gate - 2 - Gate - 2 - Finish

Course Maps

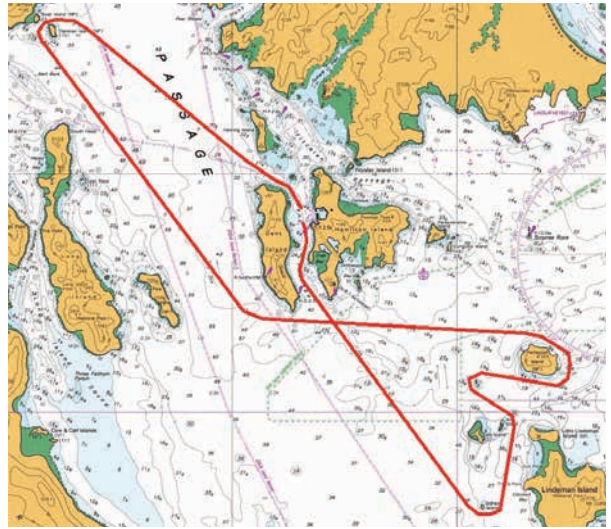
Starting Areas



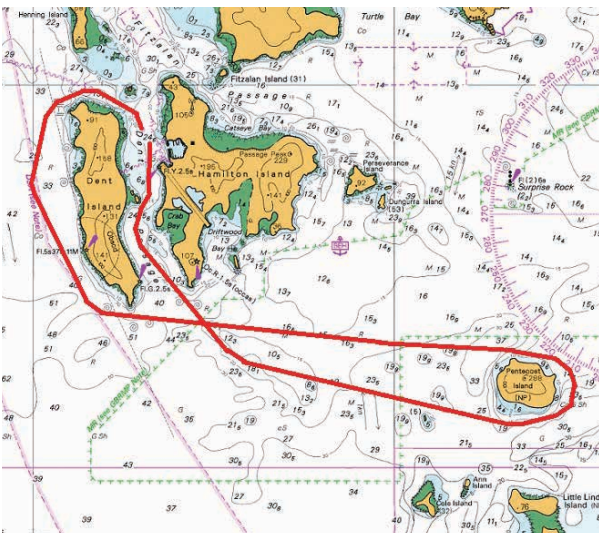
Club Marine Long Race



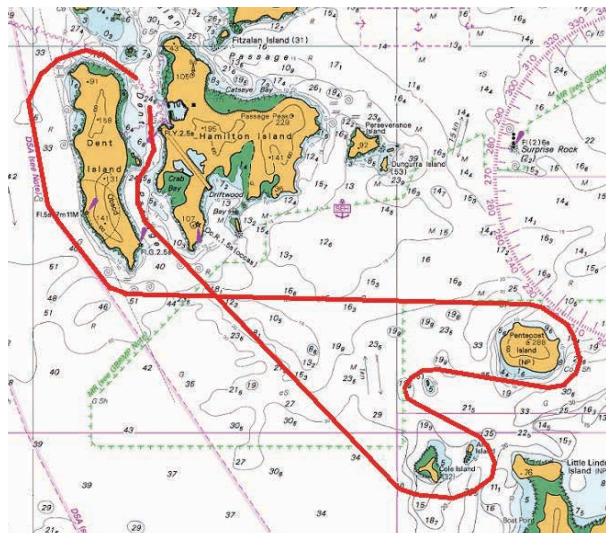
Club Marine Medium Distance Race



Course 1



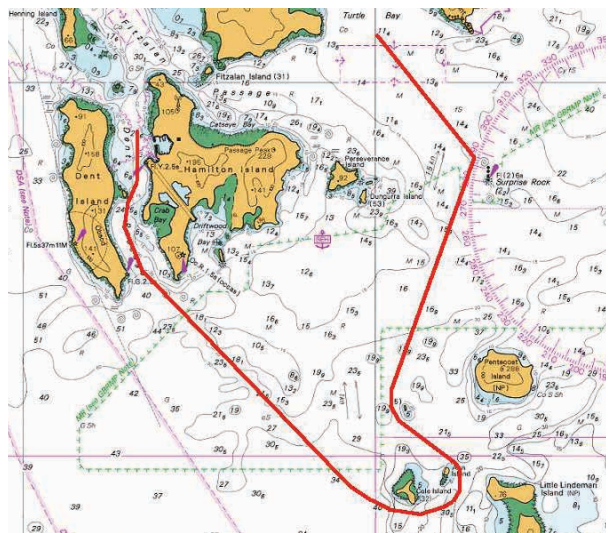
Course 2



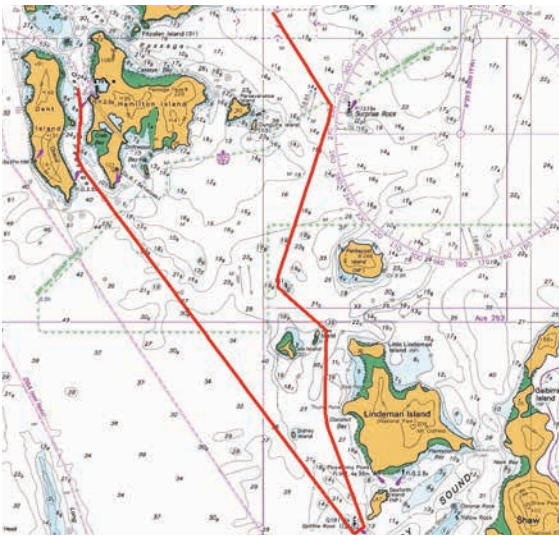
Course 3



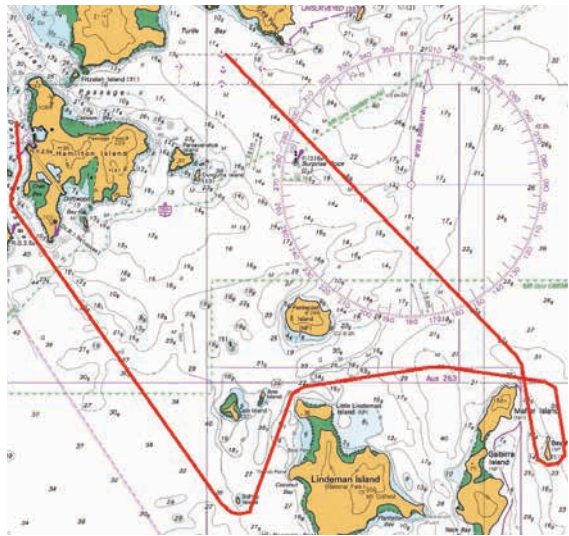
Course 4



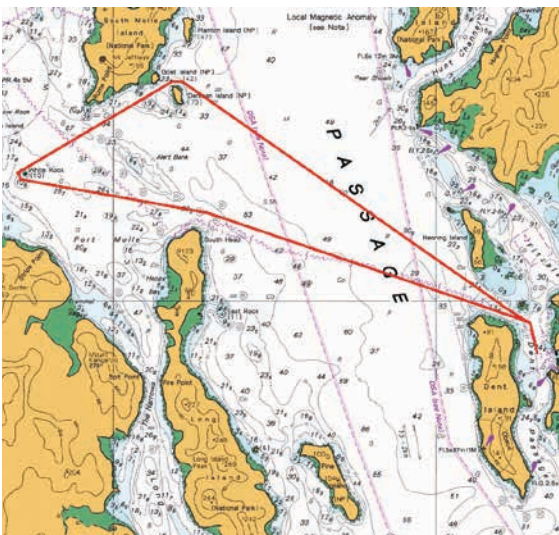
Course 5



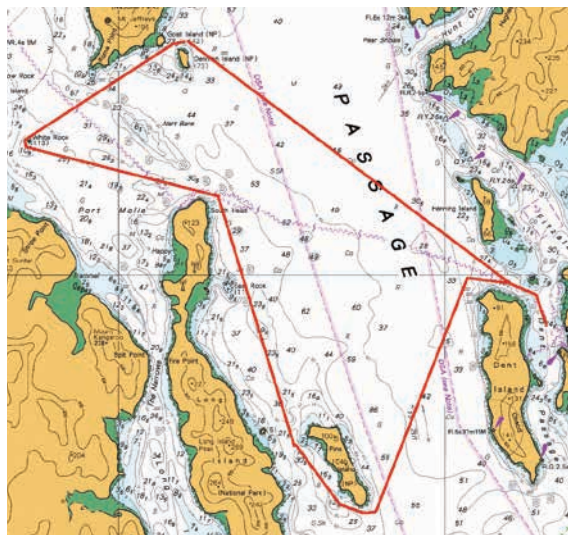
Course 6



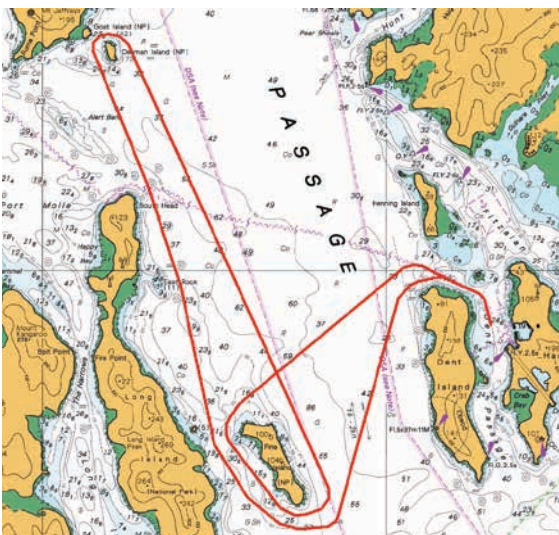
Course 7



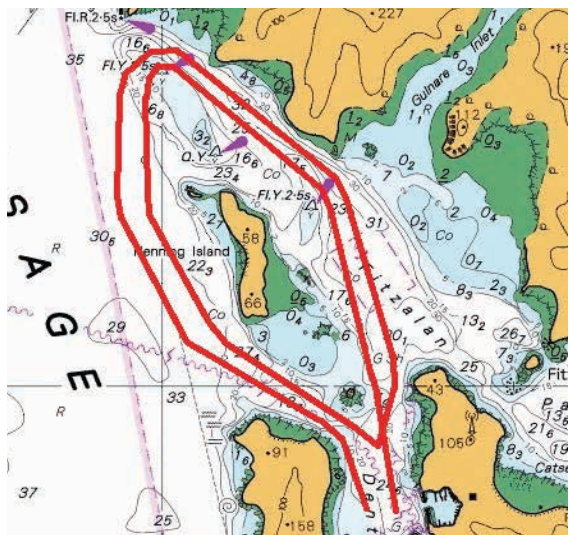
Course 8



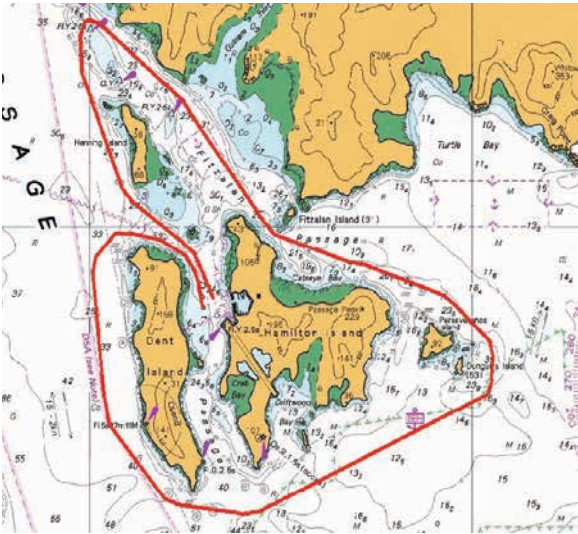
Course 9



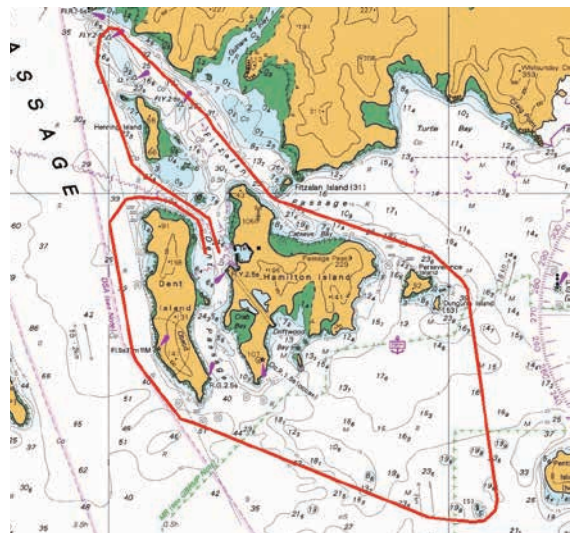
Course 10



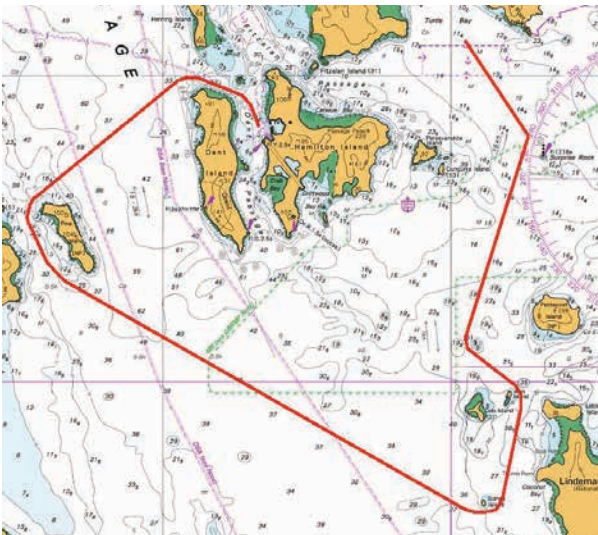
Course 11



Course 12



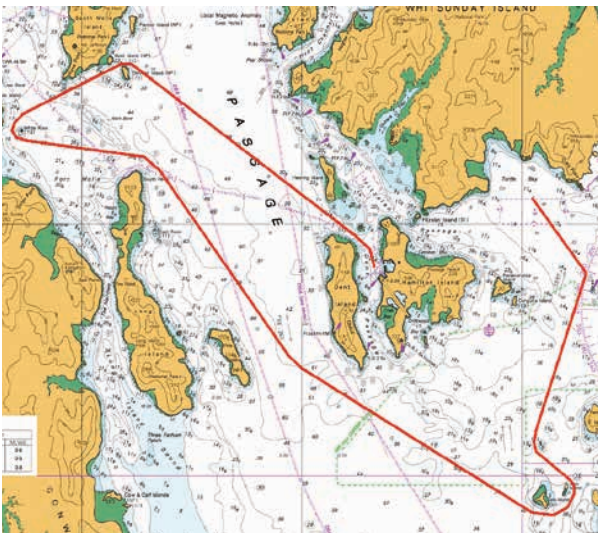
Course 13



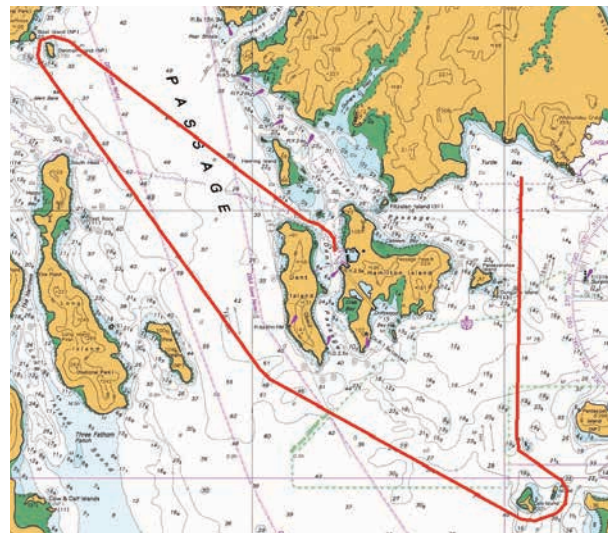
Course 14



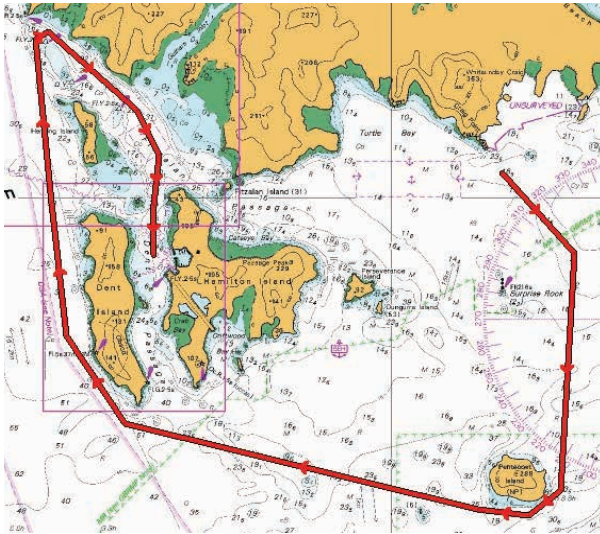
Course 15



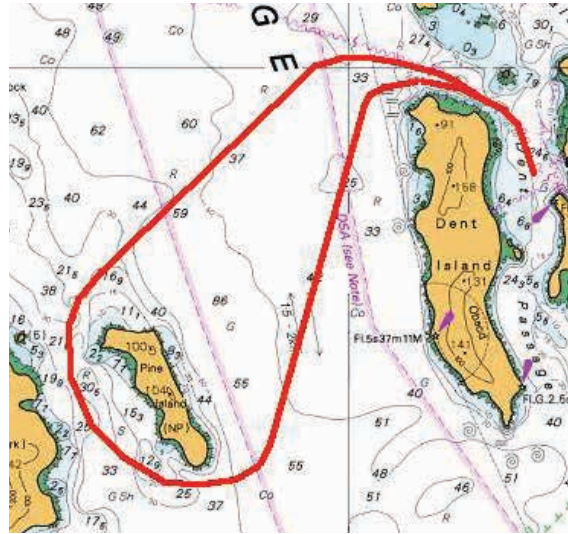
Course 16



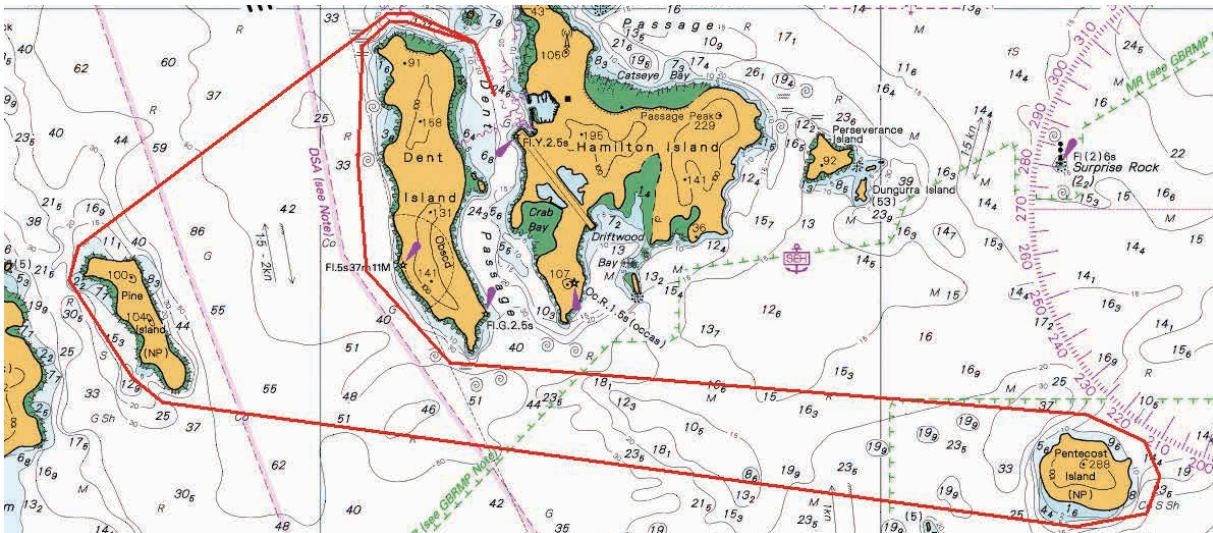
Course 17



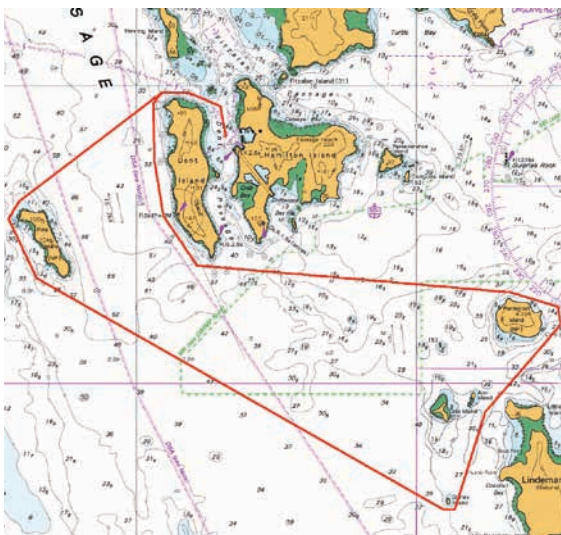
Course 18



Course 19



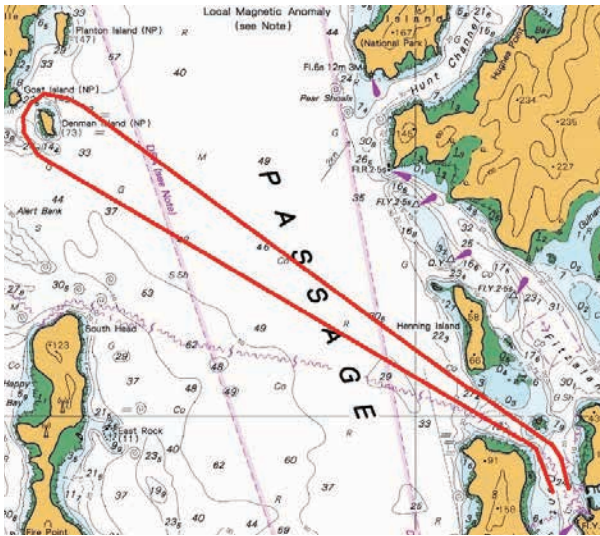
Course 20



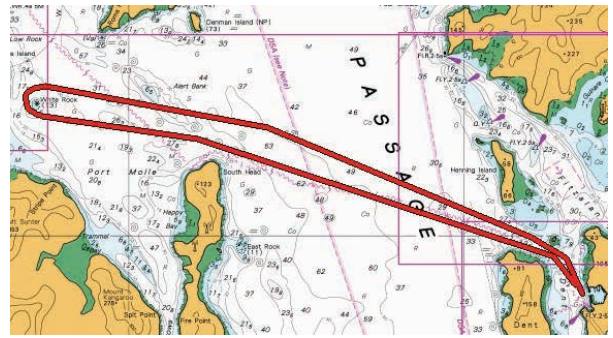
Course 21



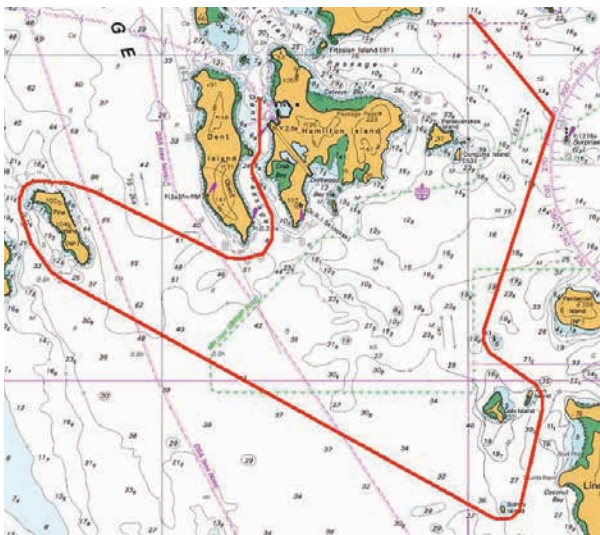
Course 22



Course 23



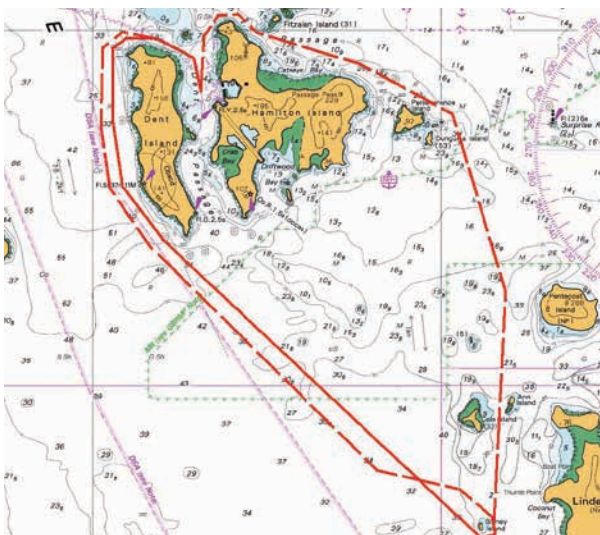
Course 24



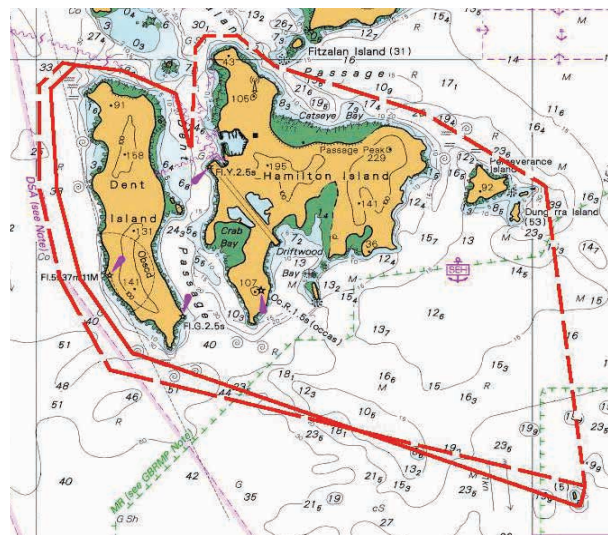
Course 25



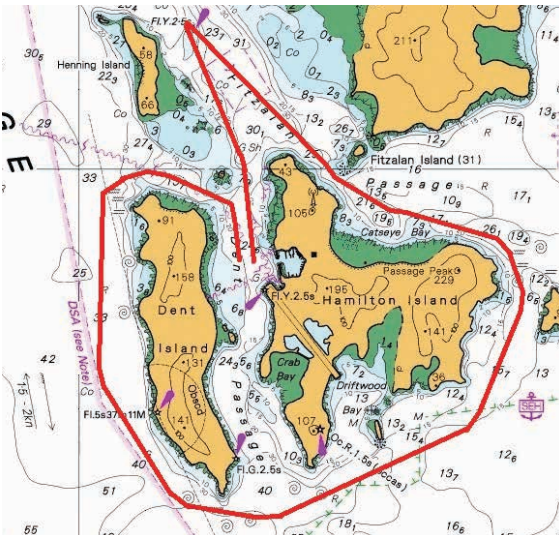
Course 26



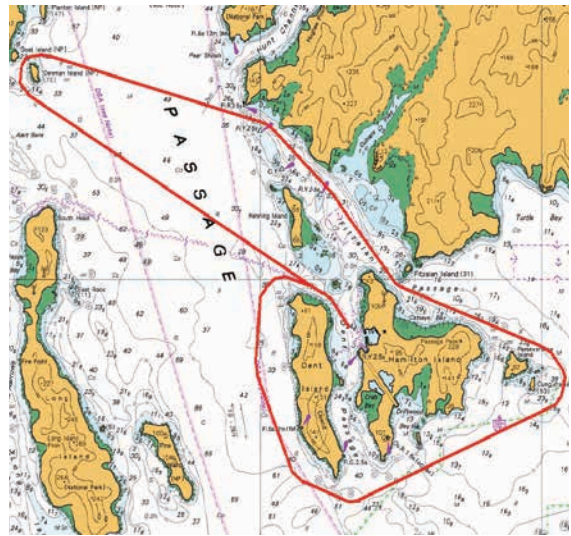
Course 27



Course 28



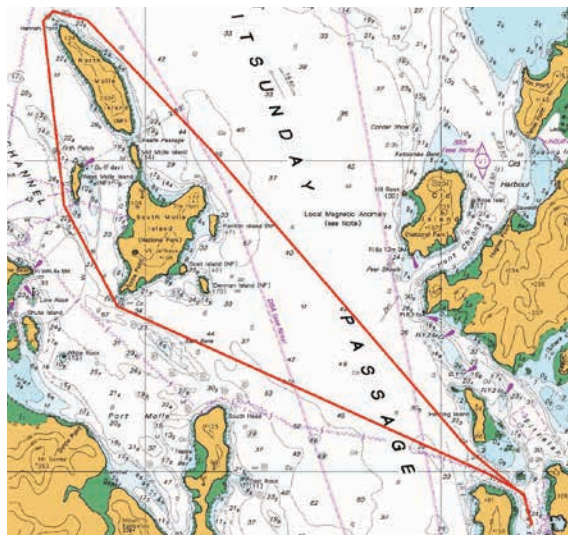
Course 29



Course 30



Course 31



Course 32



Course 33



IMPORTANT RACE WEEK COMMUNICATIONS

EMERGENCY PROCEDURES & COMMUNICATIONS

On Island Emergencies

From an island phone: 000

Inform operator of known relevant details and be guided by the operator. Relevant details include location of incident, number of injured persons etc. The trained operator will assess the information and notify the appropriate agency.

Off Island Emergencies

Yacht returning to Hamilton Island: 000

Inform operator of known relevant details and be guided by the operator. Relevant details include location of incident, number of injured persons etc. The operator will coordinate the most appropriate emergency response.

RETURN TO EITHER A1 OR A2 JETTY.

Off Island Emergencies

Yacht not returning to Hamilton Island heading elsewhere: 000

Inform operator of known relevant details and be guided by the operator. Relevant details include location of incident, number of injured persons etc. The operator will coordinate the most appropriate emergency response.

Off Island Emergencies

Out of mobile range: VHF channel 16 or 68

To contact Hamilton Island Marina Office. Inform marina staff of all known details of incident. Marina Office staff will coordinate the most appropriate emergency response.

ALL VESSELS WITH EMERGENCIES ON BOARD ARE TO GO TO A1 & A2 JETTIES.

IMPORTANT RACE WEEK NUMBERS

Race Week Office	07 4946 8158
Race Week Office	07 4946 8159
Race Week Office Fax	07 4946 8161
Marina Office	07 4946 8353
Hamilton Island Medical Centre	07 4946 8243
Emergency	000

Local Marine Industry

Hamilton Island Shipyard/Chandlery	07 4946 8138
Airlie Sails	07 4946 1125
Hawkes Boatyard	07 4946 6700
Shute Harbour Slipway/Chandlery	07 4948 8239
Warfe & Garms (boatbuilders)	07 4948 2244
Abell Point Marina	07 4946 2400
Whitsunday Sailing Club	07 4946 6138
Abel Point Diesel Centre	07 4946 5411
Quadrant Marine Chandlery	07 4946 4033
Airlie Yachting Serv. (Hydraulics)	0404 416 614

Travel

Cruise Whitsunday	07 4946 7000
Jetstar	13 15 38
Virgin Australia	13 67 89
Hamilton Island Airport	07 4946 8615

Government

Water Police	07 4948 8888
Mackay Customs	07 4965 7100 and 1300 363 263

Resort

Hamilton Island Resort	07 4946 9999
Hamilton Island Reservations	13 7333
Tour Desk	07 4946 8305
Reception Reef View Hotel	07 4946 9999
Reception Bungalows	07 4946 9999
Reception Beach Club	07 4946 8000
Reception Holiday Homes	07 4946 8640

Resort Facilities

Resort Buggy Hire	07 4946 8263
Explore	07 4946 9664
Photography Store	07 4946 8690
Westpac	07 4969 9455
Post Office	07 4946 9462
Hamilton Island Air	07 4946 9599

Food & Beverage

Bommie Restaurant	07 4948 9433
Mariners Restaurant	07 4946 8628
Denison Star Cruise & Dine	07 4946 9664
Romano's Restaurant	07 4946 8212
Pool Terrace Restaurant	07 4946 9999
Marina Tavern	07 4946 8839
Manta Ray Café	07 4946 8213
Sails Steak & Seafood Grill	07 4946 8562
Marina Café	07 4946 8224
Tako	07 4946 8032
Popeye's Fish & Chips	07 4946 8610
Bob's Bakery	07 4946 8281
Bottle Shop	07 4946 8632
General Store	07 4946 9095

OTHER INFORMATION

Tide Predictions

Times and heights of high and low waters
August - 2016

Sunday 21		Monday 22		Tuesday 23		Wednesday 24		Thursday 25		Friday 26		Saturday 27	
Time	Height	Time	Height	Time	Height	Time	Height	Time	Height	Time	Height	Time	Height
0015	3.58	0058	3.37	0146	3.09	0247	2.81	0414	2.62	0543	2.60	0108	0.82
0633	0.52	0719	0.58	0812	0.66	0919	0.72	1037	0.71	1151	0.61	0659	2.71
1243	2.97	1335	2.94	1436	2.92	1557	2.96	1720	3.13	0636	3.38	1259	0.48
1831	0.60	1927	0.83	2036	1.04	2211	1.14	2346	1.04			1937	3.61
Sunset	1753	1754		1754		1754		1754		1755		1755	

International Jury

Hamilton Island Yacht Club as the organising authority appoints the following International Jury in accordance RRS 70.5, 91(b) and Appendix N.

Russell Green, Chair	(IJ)	New Zealand
Bevan Woolley	(NJ)	New Zealand
Simon James	(NJ)	Thailand
Richard Slater	(IJ)	NSW, Australia
Lister Hughes	(IJ)	NSW, Australia
Gary Manuel	(NJ)	NSW, Australia

The decisions of the International Jury are not appealable in accordance with RRS 70.5

Shallow Water Warning Buoy

A red round buoy may be laid to mark a shallow area of Dent Passage. This buoy is not a mark of any course and is only intended to remind yachts that there is shallow water in the vicinity.



Maritime Safety Queensland
Queensland Notices to Mariners

977 (Permanent) of 2010



Whitsundays pilotage area

Locality: Dent Passage off Hamilton Island airport runway

Activity: Flight path caution to vessels

Refer to notice: no.471 (t) of 2007

Mariners are advised that vessels transiting Dent Passage off the western end of the Hamilton Island airport runway in the vicinity of approximate position Latitude 20°20.8'S, Longitude 148°56.5'E are cautioned about frequent day and night aircraft movements.

Vessels with an overall height greater than eight (8) metres are advised to keep clear of the flight path zone during aircraft movements.

The attached chartlet (Map S11-41 dated 8 November 2010) details 'distance from runway' and 'mast height' restricted areas.

Cancel notice: no.471 (t) of 2007

AUS charts affected: 252, 253 & 254

Maritime Safety Queensland charts affected: none

Note: latitude and longitude positions on WGS84 horizontal datum (compatible with GDA94 datum).

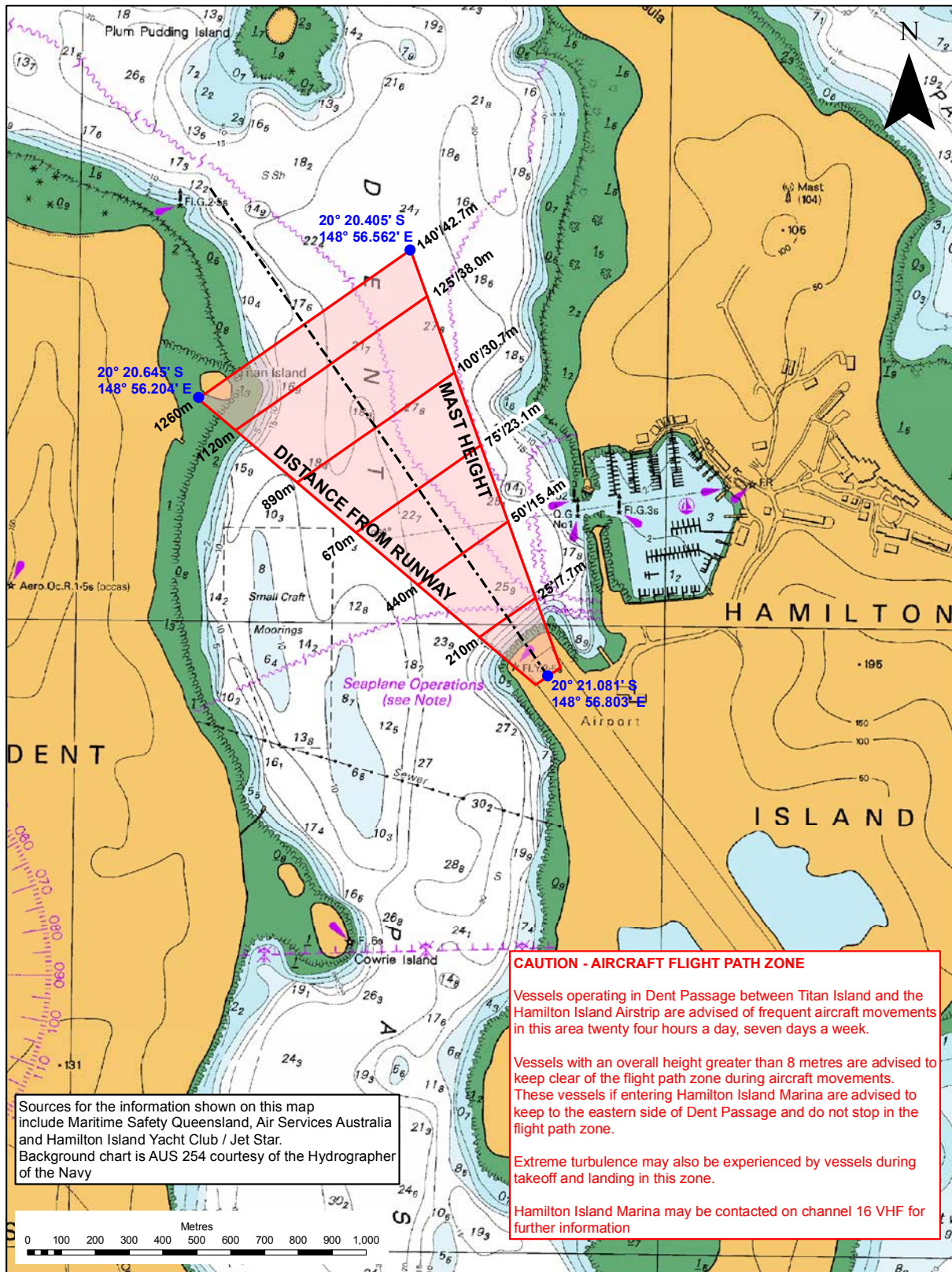
For further information about this notice, please contact:

The Mackay Regional Harbour Master's office on 07 4944 3700.

Authorised by: Director (Maritime Services)

Issued: Brisbane (Wednesday, 10 November 2010)

Aircraft On Approach to Hamilton



Sources for the information shown on this map include Maritime Safety Queensland, Air Services Australia and Hamilton Island Yacht Club / Jet Star. Background chart is AUS 254 courtesy of the Hydrographer of the Navy

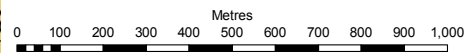
CAUTION - AIRCRAFT FLIGHT PATH ZONE

Vessels operating in Dent Passage between Titan Island and the Hamilton Island Airstrip are advised of frequent aircraft movements in this area twenty four hours a day, seven days a week.

Vessels with an overall height greater than 8 metres are advised to keep clear of the flight path zone during aircraft movements. These vessels if entering Hamilton Island Marina are advised to keep to the eastern side of Dent Passage and do not stop in the flight path zone.

Extreme turbulence may also be experienced by vessels during takeoff and landing in this zone.

Hamilton Island Marina may be contacted on channel 16 VHF for further information



Horizontal datum GDA94 (compatible with WGS84)
Map S11-41
 Copyright: The State of Qld 2010
 Prepared 8 November 2010
 Maritime Safety Qld - Spatial Services

QUEENSLAND NOTICE TO MARINERS
 Issued by Maritime Safety Queensland
DENT PASSAGE - HAMILTON ISLAND
FLIGHT PATH CAUTION



To be used with the appropriate NTM

Sailors Please Be Aware of Media Crafts

During Race Week this year there will be a number of media following the racing both from the water and from the air.

The skippers of the media boats and the pilots of the helicopters will make every effort to make sure they do not interfere with the racing as much as they can. However there may be occasions when they find themselves in a position where the wake from a boat or the down wash from the rotors of the helicopters may briefly affect the racing yachts.

This is sometimes unavoidable and we ask you to understand that they are trying to get the best shots for the media exposure the regatta deserves.

Thank you for your consideration in this matter, we appreciate your help.

Aircraft are Hazardous to Yachts

Have you ever sailed in the dirty air from another boat?

Try sailing in the dirty air from an Aircraft. Wake turbulence generated from the wind of an aircraft can cause sudden and violent wind changes (up to 80 feet/sec), possibly resulting in equipment damages or injuries.

Vortices have enough energy to create multiple whirlwinds lifting water from the surface. Vortices can exist for in excess of 3 minutes.

Jet blast from the aircraft engines can also be dangerous.

Full power is required for take off on Hamilton Island's short runway. The Airbus A320 produces 26,500 lbs of thrust per engine. The thrust can carry aft of the engine for at least 1150/348m where the wind gusts will be in excess of 40 knots.

Yachts are Hazardous to Aircraft

During landing, a Jetstar, Airbus A320 Aircraft can weigh up to 66,000kg and travels at an airspeed of 140 knots. Our normal approach path is a 3-degree slope. For Jetstar to have the required obstacle clearance above your mast, plot your mast height against the required distance from the runway.

Conducting a missed approach can present a dangerous situation. A jet aircraft can take up to 6 seconds to start climbing. During this time it will travel over 1400 feet (431 metres) and descend about 50 feet.

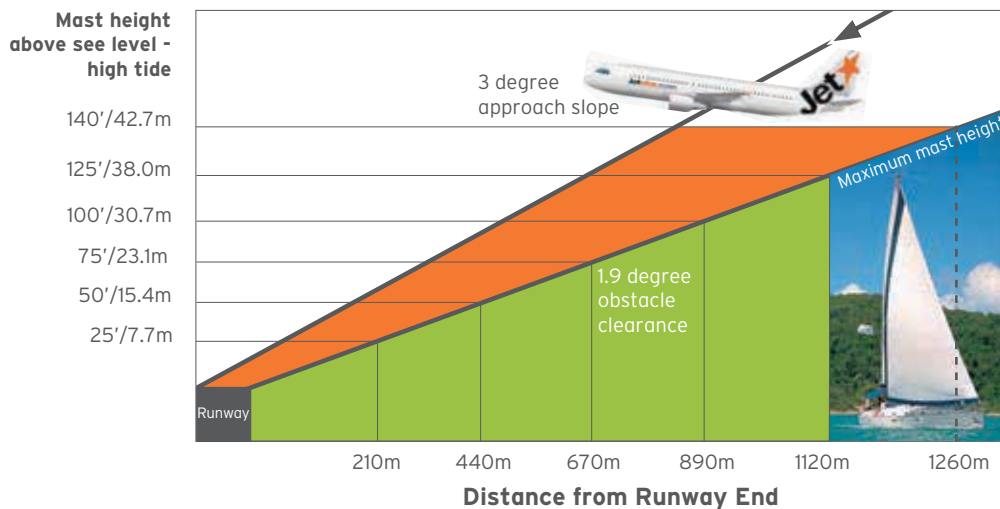
Mast height (feet)	Height (metres)	Distance out from runway
30	9.1	250m
40	12.1	340m
50	15.4	440m
60	18.4	530m
70	21.4	620m
80	24.4	710m
90	27.4	800m
100	30.7	890m
110	33.7	990m
120	36.7	1080m
130	39.7	1170m
140	42.7	1260m

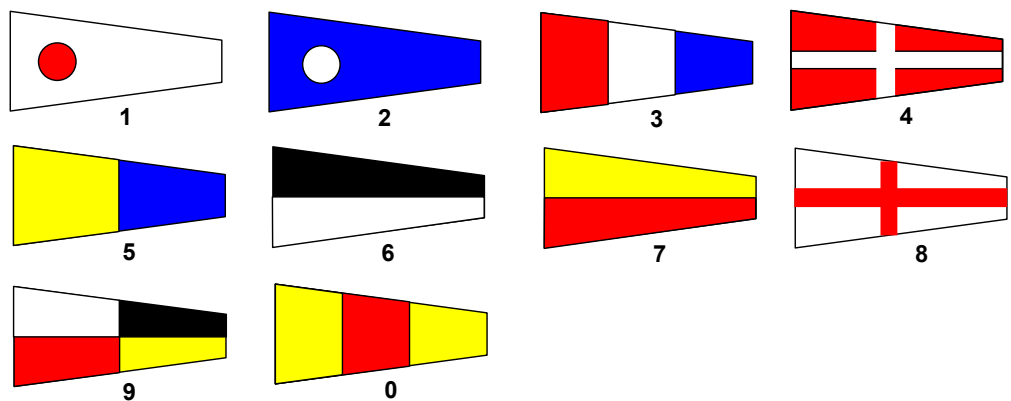
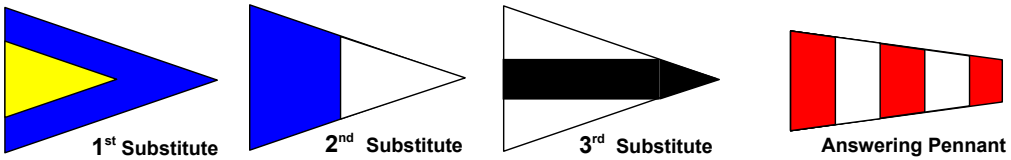
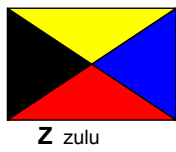
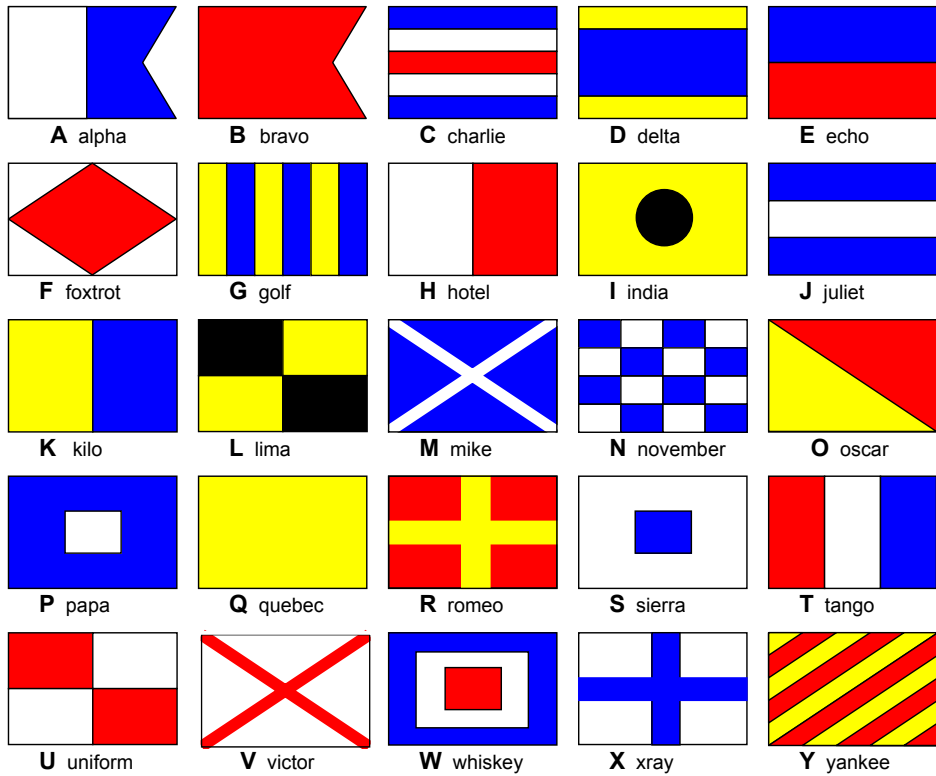
Every boat has a different limit. When sailing the Dent Passage, ensure the runway approach path is clear. Check your mast height against the table and know your distance limit before you sail out.



This information is presented by Jetstar Airways.

jetstar.com/holidays
ALL DAY, EVERY DAY, LOW FARES







Audi

