

SAILING INSTRUCTIONS

 **Audi**
Hamilton Island
Race Week 2011



Audi

19 - 27 AUGUST, 2011



HENRI LLOYD



PANDORA

MAC

WILD OATS





CONTENTS

1.	RULES	4
2.	RESPONSIBILITY	4
3.	REGATTA OFFICE AND NOTICE BOARD	4
4.	PENNANTS, BOOM STICKERS, HULL DECALS & IDENTIFICATION NUMBERS	4
5.	SIGNALS MADE ASHORE	4
6.	NOTICES TO COMPETITORS	5
7.	SCHEDULE OF EVENTS	5
8.	CLASS FLAGS	6
9.	COURSES & MARKS OF THE COURSE	6
10.	RACE COMMITTEE VESSELS	6
11.	THE START	6
12.	RECALLS	9
13.	SHORTENING THE COURSE	9
14.	ALTERNATIVE PENALTIES	9
15.	YACHTS NOT FINISHING	9
16.	THE FINISH	9
17.	TIME LIMITS	10
18.	PROTESTS	10
19.	MEDIATION	10
20.	HANDICAPS AND SCORING	10
21.	SAFETY	11
22.	RADIO COMMUNICATION	11
23.	CREW LIST FOR CLUB MARINE CLASSIC LONG RACE	11
24.	RACE RESULTS	11
25.	PRIZES	11
	ISLAND COURSES	12
	WINDWARD / LEEWARD COURSES	20
	EMERGENCY PROCEDURES & COMMUNICATIONS	28
	IMPORTANT RACE WEEK NUMBERS	28
	CREW LISTS	29
	PRACTICE SAILING - FRIDAY 19TH AUGUST	29
	TIDE PREDICTIONS FOR DENT PASSAGE	29
	WEATHER	29
	INTERNATIONAL JURY	29
	SHALLOW WATER WARNING BUOY	29
	SAILORS, PLEASE BE AWARE OF MEDIA CRAFTS	30
	RUNWAY CLEARANCE ZONE	30
	YACHTS ARE HAZARDOUS TO AIRCRAFT	30
	AIRCRAFT ARE HAZARDOUS TO YACHTS	30

SAILING INSTRUCTIONS

1. RULES

- 1.1 The races will be governed by the rules as defined in the 2009 – 2012 Racing Rules of Sailing (RRS) of the International Sailing Federation (ISAF), Special Regulations of Yachting Australia (YA), the IRC rule (parts 1, 2 & 3) where applicable, all as modified by these Sailing Instructions.
- 1.2 RRS 52 is amended to permit powered winches for boats over 14.0m LOA.
- 1.3 RRS 50.2 and 50.3 are amended to permit boats to tack spinnakers to bowsprits or bow poles.
- 1.4 Boats not racing in an IRC Handicapped Class shall request permission from the Race Committee to use movable and/or variable ballast for the purpose of increasing stability. Any such request must be accompanied by full details of the system involved, and any such system will be taken into account in establishing the yacht's handicap. Stored power may be used for the operation of movable ballast systems. RRS 51 and 52 are modified to the extent required by this paragraph.
- 1.5 Boats entered in Non-Spinnaker Class shall not carry spinnakers, but may use a spinnaker pole to pole out a headsail. Headsails shall be fully hanked or attached to the forestay by means of a luff groove device.
- 1.6 Unless in use, no part of any anchor may project forward of the bow whilst racing.
- 1.7 Nothing in the Notice of Race or Sailing Instructions relieves a boat of her responsibility under civil law to comply with the International Regulations for Preventing Collisions at Sea or local regulations.
- 1.8 Between sunset and sunrise, when a boat cannot determine with certainty what tack the other boat is on, she shall keep clear of that boat. Competitors are reminded that part of the definition of "room" includes taking into account the existing conditions (including visibility).

2. RESPONSIBILITY

- 2.1 All those taking part in these races do so at their own risk and responsibility. Neither Hamilton Island Yacht Club Inc. nor any other club or company connected with the organising of these races is responsible for the seaworthiness of a yacht whose entry is accepted, nor for the sufficiency or adequacy of its equipment. Owners shall accept full responsibility for the seaworthiness and safe navigation of their boats and competence of their crews.

- 2.2 Yacht owners, skippers and crew should be aware that there may be uncharted obstacles under the waters on which races are held. Such uncharted obstacles include reefs, bomboras and rocks which could be a danger to yachts and crews. Hamilton Island Yacht Club Inc. accepts no responsibility for any damage to or loss of any yacht or for injury to or death of any crew person which may occur as a result of a collision with any underwater obstacle. All participants compete in races at their own risk.
- 2.3 Attention is drawn to Fundamental Rule 4, which states "The responsibility for a boat's decision to participate in a race or to continue racing is hers alone".

3. REGATTA OFFICE AND NOTICE BOARD

The Regatta Office will be located in the Hamilton Island Yacht Club building. The Regatta Notice Board will be in the same vicinity.

4. PENNANTS, BOOM STICKERS, HULL DECALS & IDENTIFICATION NUMBERS

- 4.1 Pennants, boom stickers and hull decals may be provided by the event sponsors. If provided, pennants shall be flown from the backstay at all times whilst racing, boom stickers shall be attached to the boom and hull decals shall be attached to the topsides approximately one metre from the bow. Boats failing to comply with this may be protested by the Race Committee only. This alters RRS 60.1 and 60.3
- 4.2 Yachts in Cruising Divisions One, Two and Three and Non-Spinnaker that do not have sail numbers or have sails with conflicting sail numbers shall display a bow number, which will be provided. The bow number shall be located on both sides of the hull forward of any sponsors decals. This amends rule 77.

5. SIGNALS MADE ASHORE

- Signals made ashore will be displayed from the flag pole on the Hamilton Island Yacht Club deck.
- 5.2 When a signal is displayed over a class flag, it shall apply to that class only.
 - 5.3 Code Flag "AP" (Answering Pendant), with two sounds (one sound when lowered) means, "The race is postponed. The Warning Signal will be made not less than 60 minutes after this signal is lowered". (This changes RRS Race Signals "AP")

SAILING INSTRUCTIONS

6. NOTICES TO COMPETITORS

- 6.1 Notices to competitors will be posted on the official regatta notice board located at the Hamilton Island Yacht Club.
- 6.2 Any change to the Sailing Instructions made ashore will be posted at least one hour before the race affected and will be signalled by the display of Code Flag "L".

Changes to the Sailing Instructions made afloat will be indicated by the display of Code Flag 3rd Substitute accompanied by two sound signals. The change will be communicated orally on the designated course VHF channel and/or in writing.

7. SCHEDULE OF EVENTS

Date	Class	Event
Friday 5th Aug	All Classes	Entries close
Thursday 18th Aug	All Classes	Registration – 1300 hrs to 1700 hrs.
Friday 19th Aug	All Classes	Registration – 1000 hrs to 1700 hrs.
Saturday 20th Aug	All Classes except SB3 Class	Lindeman Island race
Sunday 21st Aug	IRC Class A & Class B	W/L Courses (up to 3 races IRC Class A)
		W/L Courses (up to 2 races IRC Class B)
	Melges 32 Class	W/L Courses (up to 4 races)
	All other Classes	Short Around-the-Islands race
Monday 22nd Aug	SB3 Class & Melges 32 Class	W/L Courses (up to 4 races)
	Performance Racing	W/L Courses (2 races)
	All Other Classes	Short Around-the-Islands race
Tuesday 23rd Aug	SB3 Class & Melges 32 Class	W/L Courses (up to 4 races)
	Performance Racing & IRC Class C	Double Cone Island race
	IRC Classes A, B & Super Maxi	Club Marine Classic Long race
	Cruising & Non-Spinnaker	Short Around-the-Islands race
Wednesday 24th Aug	All Classes	Lay day - Shore side activities
Thursday 25th Aug	SB3 Class	W/L Courses (up to 4 races)
	IRC Class A & IRC Class C	W/L Courses (up to 3 races IRC Class A)
		W/L Courses (up to 2 races IRC Class C)
	All other Classes	Short Around-the-Islands race
Friday 26th Aug	SB3 Class	Inshore Bay race
	All other Classes	Short Around-the-Islands race
Saturday 27th Aug	All Classes except SB3	Molles Island Race
		Presentation of Trophies

The Race Committee may make changes to this schedule at any time.

SAILING INSTRUCTIONS

8. CLASS FLAGS

Class	Class Flag	Backstay Flag Colour
IRC Grand Prix Class A	"1"	Gold
IRC Passage Class B	"2"	Grey
IRC Passage Class C	"3"	Purple
Performance Racing Division 1	"4"	White
Performance Racing Division 2	"5"	Green
Cruising Division 1	"6"	Pink
Cruising Division 2	"7"	Fluro Yellow
Cruising Division 3	"8"	Light blue
Non-Spinnaker	"9"	Orange
Melges 32	"E"	-
SB3 Class	"D"	-
Super Maxi Class	"W"	-

Boats shall fly the provided coloured backstay flag from the backstay or the aftermost starboard shroud whilst racing, above any event sponsors pennant.

9. COURSES & MARKS OF THE COURSE

See appendix "A"

10. RACE COMMITTEE VESSELS

Race Committee vessels will display the Hamilton Island Yacht Club burgee when on station.

11. THE START

11.1 STARTING TIMES

Saturday 20th August

Lindeman Island Race - all Classes

Time	Class	Course	Starting Area	VHF
1030	Non-Spinnaker	Island	Eastern	Ch 10
1040	Cruising Division 3	Island	Eastern	Ch 10
1050	Cruising Division 2	Island	Eastern	Ch 10
1100	Cruising Division 1	Island	Eastern	Ch 10
1110	Performance Racing Division 2	Island	Eastern	Ch 10
1120	Performance Racing Division 1	Island	Eastern	Ch 10
1130	IRC Passage Class C	Island	Eastern	Ch 10
1140	IRC Passage Class B	Island	Eastern	Ch 10
1150	IRC Grand Prix Class A	Island	Eastern	Ch 10
1210	Super Maxi	Island	Eastern	Ch 10

Sunday 21st August

For windward/leeward races subsequent races will be held as soon as practicable after the completion of the previous race.

Time	Class	Course	Starting Area	VHF
1050	Performance Racing Division 1	Island	Southern	Ch 11
1055	Performance Racing Division 2	Island	Southern	Ch 11
1100	IRC Passage Class C	Island	Southern	Ch 11
1105	Cruising Division 1	Island	Southern	Ch 11
1110	Cruising Division 2	Island	Southern	Ch 11
1115	Cruising Division 3	Island	Southern	Ch 11
1120	Non-Spinnaker	Island	Southern	Ch 11
1100	IRC Grand Prix Class A	W/L	Eastern	Ch 10
1105	IRC Passage Class B	W/L	Eastern	Ch 10
1100	Melges 32 Sports Boats	W/L	To be advised	Ch 69
1200	Super Maxi	Island	Dent Passage	Ch 11

SAILING INSTRUCTIONS

Monday 22nd August

For windward/leeward races subsequent races will be held as soon as practicable after the completion of the previous race.

Time	Class	Course	Starting Area	VHF
1025	Cruising Division 1	Island	Dent Passage	Ch 11
1030	Cruising Division 2	Island	Dent Passage	Ch 11
1035	Cruising Division 3	Island	Dent Passage	Ch 11
1040	Non-Spinnaker	Island	Dent Passage	Ch 11
1100	IRC Grand Prix Class A	Island	Eastern	Ch 10
1105	IRC Passage Class B	Island	Eastern	Ch 10
1110	IRC Passage Class C	Island	Eastern	Ch 10
1115	Performance Racing Division 1	W/L	Eastern	Ch 10
1130	Performance Racing Division 2	W/L	Eastern	Ch 10
1100	SB3 & Melges 32 Sports Boats	W/L	To be advised	Ch 69
1200	Super Maxi	Island	Dent Passage	Ch 11

Tuesday 23rd August

Club Marine Classic Long Race - IRC Grand Prix Class A, IRC Passage Class B

Double Cone Island Race – IRC Passage Class C & all Performance Racing Divisions

Time	Class	Course	Starting Area	VHF
0900	Performance Racing Division 2	Island	Dent Passage	Ch 11 & 81
0905	Performance Racing Division 1	Island	Dent Passage	Ch 11 & 81
0910	IRC Passage Class C	Island	Dent Passage	Ch 11 & 81
0920	IRC Passage Class B	Island	Dent Passage	Ch 11 & 81
0925	IRC Grand Prix Class A	Island	Dent Passage	Ch 11 & 81
1000	Super Maxi	Island	Dent Passage	Ch 11 & 81
1100	Cruising Division 1	Island	Dent Passage	Ch 11
1105	Cruising Division 2	Island	Dent Passage	Ch 11
1110	Cruising Division 3	Island	Dent Passage	Ch 11
1115	Non-Spinnaker	Island	Dent Passage	Ch 11
1100	SB3 & Melges 32 Sports Boats	W/L	To be advised	Ch 69

Wednesday 24th August LAY DAY ALL CLASSES – SHORE SIDE ACTIVITIES

Thursday 25th August

For windward/leeward races subsequent races will be held as soon as practicable after the completion of the previous race.

Time	Class	Course	Starting Area	VHF
1100	IRC Passage Class B	Island	Dent Passage	Ch 11
1105	Performance Racing Division 1	Island	Dent Passage	Ch 11
1110	Performance Racing Division 2 & Melges 32 Class	Island	Dent Passage	Ch 11
1115	Cruising Division 1	Island	Dent Passage	Ch 11
1120	Cruising Division 2	Island	Dent Passage	Ch 11
1125	Cruising Division 3	Island	Dent Passage	Ch 11
1130	Non-Spinnaker	Island	Dent Passage	Ch 11
1100	IRC Grand Prix Class A	W/L	Eastern	Ch 10
1105	IRC Passage Class C	W/L	Eastern	Ch 10
1100	SB-3	Bay	To be advised	Ch 69
1200	Super Maxi	Island	Dent Passage	Ch 11

SAILING INSTRUCTIONS

Friday 26th August

Time	Class	Course	Starting Area	VHF
1100	Performance Racing Division 1	Island	Dent Passage	Ch 11
1105	Performance Racing Division 2 & Melges 32 Class	Island	Dent Passage	Ch 11
1110	Cruising Division 1	Island	Dent Passage	Ch 11
1115	Cruising Division 2	Island	Dent Passage	Ch 11
1120	Cruising Division 3	Island	Dent Passage	Ch 11
1125	Non-Spinnaker	Island	Dent Passage	Ch 11
1100	IRC Grand Prix Class A	Island	Eastern	Ch 10
1105	IRC Passage Class B	Island	Eastern	Ch 10
1110	IRC Passage Class C	Island	Eastern	Ch 10
1100	SB3 Sports Boats	W/L	To be advised	Ch 69
1200	Super Maxi	Island	Dent Passage	Ch 11

For windward/leeward races subsequent races will be held as soon as practicable after the completion of the previous race.

Saturday 27th August

Molles Island Race - all classes

Time	Class	Course	Starting Area	VHF
1030	Cruising Division 1	Island	Dent Passage	Ch 11
1035	Cruising Division 2	Island	Dent Passage	Ch 11
1040	Cruising Division 3	Island	Dent Passage	Ch 11
1045	Non-Spinnaker	Island	Dent Passage	Ch 11
1055	Performance Racing Division 1	Island	Dent Passage	Ch 11
1100	Performance Racing Division 2 & Melges 32 Class	Island	Dent Passage	Ch 11
1105	IRC Grand Prix Class A	Island	Dent Passage	Ch 11
1110	IRC Passage Class B	Island	Dent Passage	Ch 11
1115	IRC Passage Class C	Island	Dent Passage	Ch 11
1200	Super Maxi	Island	Dent Passage	Ch 11

SAILING INSTRUCTIONS

11.2 STARTING LINES

Dent Passage starting line. The starting line will be between the flagstaff on the Hamilton Island Yacht Club displaying the Hamilton Island Yacht Club burgee and a red and white AUDI inflatable buoy laid in Dent Passage. A race committee vessel may be in the near vicinity of the pin end and will be identified by displaying a white flag with a black letters "RC". Boats starting are required to keep clear of this vessel. The race committee may move the location of the starting line due to wind, tidal or safety considerations.

Eastern starting line. The starting line will be laid in the area between Catseye Bay and Craig Point to the North-East of Hamilton Island, and will be between the signal mast displaying an orange flag on the committee vessel, and a white AUDI inflatable buoy at the Port end.

Southern starting line. The starting line will be laid off the Southern end of Dent Passage, and will be between the signal mast displaying an orange flag on the committee vessel and a red and white AUDI inflatable buoy. (Yachts should allow plenty of time to get to this starting line in case they should be delayed in crossing the flight path of an approaching aircraft.)

Note: For committee vessel starts, an inner limit buoy may be laid near the committee vessel approximately on the starting line. Boats shall not pass between this buoy and the committee vessel at any time. A breach of this SI is open to protest by the Race Committee only. This alters RRS 60.1 and 60.3.

12. RECALLS

- 12.1 Following a General Recall the new start will be five (5) minutes after the recalled start.
One minute after the recalled start the First Substitute will be lowered, the class flag(s) for the class to be re-started will be hoisted along with the Preparatory Signal. (This changes RRS 29.2 and Race Signals "First Substitute")
- 12.2 Following a General Recall the start(s) for the succeeding class(es) will be delayed accordingly.
- 12.3 In addition to the requirements of RRS 29, the Race Committee MAY call yachts on the designated course VHF channel.

13. SHORTENING THE COURSE

The Race Committee may shorten the course at any time. Yachts shall finish between the Committee vessel displaying Code Flag "S" and the inflatable mark moored nearby, or the nearest point of land if no mark is laid. This changes RRS 32 and Race Signals.

14. ALTERNATIVE PENALTIES

For Windward / Leeward Courses W1 – W6, the Two-Turns penalty (RRS 44.1) is changed to a One Turn penalty except for infringements that occur within three boat lengths of a rounding mark.

15. YACHTS NOT FINISHING

Yachts not finishing a race shall inform the Race Committee on the appropriate course VHF channel, or by calling the Regatta Office on 07 4946 8159.

16. THE FINISH

- 16.1 Dent Passage finishing line. The finishing line will be in Dent Passage and will be between the flagstaff on the Hamilton Island Yacht Club displaying the Hamilton Island Yacht Club burgee and a red and white AUDI inflatable buoy laid in Dent Passage. During the hours of darkness the finishing line may be illuminated at each end by blue flashing strobe lights. When crossing the finishing line after sunset or in poor visibility conditions every boat shall highlight her sail number or bow number with a powerful torch and shall identify herself to the race committee by radio on the appropriate channel. Until a boat makes certain she has identified herself, the race committee will not be responsible for recording her finishing time or position.
- 16.2 Committee vessel finishing line. The finishing line will be in a similar position to the starting line and will be between the signal mast displaying an orange flag, on the committee vessel and a white inflatable ADUI buoy moored nearby.

SAILING INSTRUCTIONS

17. TIME LIMITS

17.1

Course	Time Limit
Club Marine Classic Long Race	16 hours
Double Cone Island Race	9.5 hours
Windward/Leeward Courses W1 – W6	2.5 hours or sunset whichever is earlier
All other courses	7.0 hours or sunset whichever is earlier

17.2 Any boat still racing when her time limit expires will be scored points equal to the number of boats finishing within the time limit plus 30% of the number of starters rounded to the nearest whole number, but no more points than the number of starters. Such boats will be scored Time Limit Expired (TLE). This changes RRS 35, A4.2 and A5.

18. PROTESTS

18.1 Protests will be heard by an international jury constituted in accordance with RRS Appendix N. Decisions of the Jury will be final as provided in RRS 70.5.

18.2 RRS 60.3 (a) (1) is changed by deleting the word "serious".

18.3 Protests shall be delivered to the Regatta Office within 1.5 hours after the finish time of the last boat in her class (or in the last race of the day when multiple races are conducted) or if the race office is closed at night, by 0900 hours the next day.

18.4 Protests will be heard approximately in the order they are received commencing as soon as practicable after racing.

18.5 Notification of the details of protest hearings will be placed on the Official Notice Board as soon as possible to inform competitors where and when there is a hearing in which they are parties to a protest or named as a witness. These notices are deemed to fulfil the requirements of RRS 63.2. Representatives of boats, who are parties to hearings, and their witnesses, are advised to remain on call in the vicinity of the Regatta Office (or such other place as directed by the Jury Secretary).

18.6 RRS 66 is changed by adding: "On the last day of racing, a party to the hearing may ask for a reopening no later than 20 minutes after being informed of the decision. If the party was informed of the decision on the previous day it shall ask for a reopening no later than the time limit for protests."

18.7 In accordance with RRS 64.1(a), for a breach of a rule of RRS Part 2, the Jury may award a disqualification or a time penalty. For all other rules the penalty shall be at the discretion of the Jury which may include no penalty.

19. MEDIATION

19.1 For protests involving an alleged breach of a rule of RRS Part 2, a short mediation hearing may be held prior to a protest hearing. This changes Part 5, Section B.

19.2 After a written protest is lodged, one representative from each boat will meet with the mediator. No witnesses will be permitted at this hearing.

19.3 A boat that accepts fault at an mediation hearing will be penalised by having her race score increased by 25% of the difference between the boats finishing score and the score for DSQ in her division or class, rounded to the nearest whole number. All other boats scores will remain the same. Once accepted, this decision is not subject to reopening or appeal. This alters RRS 63, 64.1(a), 66 and Appendix A.

19.4 The acceptance of a mediator's opinion cannot be grounds for redress or reopening. This changes RRS 60.1, 62 and 66.

19.5 The mediator may be a member of any subsequent Jury or may observe and give testimony to the Jury.

20. HANDICAPS AND SCORING

20.1 The scoring system shall be the Low Point System, RRS Appendix A except if there are four or less races sailed for a class or division then all races will count. One race will constitute a series in each Class. The number of scheduled races and handicap system in each Class is as follows:

Class	Handicap System	Number of scoring races
IRC Grand Prix Class A	IRC	10
IRC Passage Classes B & C	IRC	8
Performance Racing Class	Performance Handicap	7
Cruising Classes	Performance Handicap	7

SAILING INSTRUCTIONS

Class	Handicap System	Number of scoring races
Non-Spinnaker Class	Performance Handicap	7
SB3 Class	Scratch (no handicap)	14
Melges 32 Class (Gold Cup Series)	Scratch (no handicap)	11
Melges 32 Passage Series	Scratch (no handicap)	4
Super Maxi Class	Performance Handicap	7

20.3 IRC Classes results will be calculated by the application of the IRC Time Corrector (TCC) as a multiplier of elapsed time. The boat with the lowest corrected time (after application of scoring penalties, if any) will be scored first and so on.

Super Maxi, Performance Racing, Cruising & Non-Spinnaker results will be calculated by the application of Time Correction Factors (TCF's) as a multiplier of elapsed time. The boat with the lowest corrected time (after application of scoring penalties, if any) will be scored first and so on. TCF's for each yacht will be determined by the H.I.Y.C. Handicap Committee and may be altered at any time. Melges 32 class and SB3 class will be score with no handicaps applied.

20.4 The decision of the handicapper of the H.I.Y.C. or their representative on any handicap matter will be final and will not be cause for requests for redress. This alters RRS 60.1 and 62.

21. SAFETY

21.1 **IRC Grand Prix Class A, IRC Passage Class B and Super Maxi:** YA Special Regulations Category 3 for the Club Marine Classic Long Race and Category 5 for all other races will apply.

21.2 **IRC Passage Class C, Performance Racing, Melges 32, Cruising and Non-Spinnaker:** YA Special Regulations Category 5 will apply.

21.3 **SB3 Class:** YA Special Regulations Category 6 will apply

21.4 A boat may be inspected at any time for compliance with Special Regulations or Rating Certificate.

22. RADIO COMUNICACION

22.1 The Race Committee will broadcast its intentions for the day at 0805 hrs each race day on VHF Ch 11. In addition the Race Committee may broadcast the course to be sailed, names/sail numbers of OCS boats, and/or other information of interest to competitors on the appropriate course VHF channel. The Race Committee may also transmit course

information by Short Message Service (SMS). Any failure of, or defect in, such a broadcast will not be grounds for redress. This alters RRS 60.1 and 62.

22.2 Club Marine Classic Long Race

Mandatory position reporting radio schedules on VHF channel 81 will be conducted at 1803 hrs, 2103 hrs and 0003 hrs. Yachts still racing will be called in alphabetical order at these times. During the Club Marine Classic Long Race, the leading boat in each class and the last boat in each class are requested to call the Race Committee (VHF Ch 81) as they round each major mark of the course.

23. CREW LIST FOR CLUB MARINE CLASSIC LONG RACE

Yachts competing in the Club Marine Classic Long Race shall submit a completed crew list, on the form provided, to the Race Office prior to 1700hrs on Monday 22nd August.

24. RACE RESULTS

Results for each race will be posted on the Regatta Noticeboard as soon as practicable after each race. Results will also be posted on the event website. Copies of result sheets may be available from the Regatta Office.

25. PRIZES

Prizes will be awarded for 1st, 2nd and 3rd on corrected time in each race for each Class. Prizes for each day's racing will be presented on the main stage opposite the Marina Tavern at approximately 1730 hrs after racing each day.

Trophies will be awarded to 1st, 2nd and 3rd place in the overall pointscore in each Class. Trophies will be presented at a ceremony on the evening of Saturday 27th August 2011.

In addition the following special awards will be made at the trophy presentation

- Grand Prix Gun Boat Trophy for the IRC Grand Prix Class A boat which has the most Line Honours.
- Gun Boat Trophy for other than IRC Grand Prix Class A.
- The Leon O'Donoghue Trophy for "Boat of the Week"
- The Prix d'Elegance for the best-presented boat and crew.
- The North Queensland Trophy for the best performing yacht whose home port is between Bundaberg & Port Douglas.

(The Race Committee will determine the winners of these special awards using whatever criteria they deem appropriate.)

APPENDIX A - COURSE AND MARK DESCRIPTIONS

ISLAND COURSES

- A 1 The course to be sailed by each class will be signalled by a Numeral Board displayed near the Hamilton Island Yacht Club flagstaff for Dent Passage starts and from the committee vessel for on-water starts. The course to be sailed may also be broadcast on the designated course VHF Channel.
- A 2 The following course descriptions list the order in which marks are to be passed and the side each mark is to be rounded. Please note; marks denoted * are passing marks.
- A 3 The approximate position given is the pinnacle of the island or rock designated as a mark of the course.

Course for Saturday 20th August

Lindeman Island Race – all Classes **23.3 nm approx**

COURSE MARK	MARK DESCRIPTION	REQUIRED SIDE
Starting line	Eastern Start Line	
Lindeman Island	Approx S 20° 26.74', E 149° 02.78'	Starboard
Spitfire Rock mark	Approx S 20° 28.70', E 149° 01.60'	Starboard
Dent Island*	Approx S 20° 20.75', E 148° 55.85'	Port
Finishing Line	Dent Passage in a northerly direction	Port

Courses for Tuesday 23rd August

Club Marine Classic Long Race - IRC Grand Prix Class A, IRC Passage Class B & Super Maxi **63 nm approx**

COURSE MARK	MARK DESCRIPTION	REQUIRED SIDE
Starting line	Dent Passage in a northerly direction	
Dent Island	Approx S 20° 20.75', E 148° 55.85'	Port
South Molle Island*	Approx S 20° 16.47' E 148° 50.24'	Port
North Molle Island*	Approx S 20° 13.62' E 148° 49.29'	Port
Double Cone Island	Approx S 20° 06.26' E 148° 42.80'	Port
Armit Island	Approx S 20° 06.07', E 14° 39.00'	Port
South Molle Island	Approx S 20° 16.47' E 148° 50.24'	Port
Pentacost Island	Approx S 20° 23.81', E 149° 01.79'	Port
Dent Island	Approx S 20° 20.75', E 148° 55.85'	Starboard
Finishing Line	Dent Passage in a southerly direction	

APPENDIX A - COURSE AND MARK DESCRIPTIONS

Double Cones Island Race - Performance Racing and IRC Passage Class C **41 nm approx**

COURSE MARK	MARK DESCRIPTION	REQUIRED SIDE
Starting line	Dent Passage in a northerly direction	
Dent Island	Approx S 20° 20.75', E 148° 55.85'	Port
South Molle Island*	Approx S 20° 16.47' E 148° 50.24'	Port
North Molle Island*	Approx S 20° 13.62' E 148° 49.29'	Port
Double Cone Island	Approx S 20° 06.26' E 148° 42.80'	Port
South Molle Island	Approx S 20° 16.47' E 148° 50.24'	Port
Dent Island	Approx S 20° 20.75', E 148° 55.85'	Starboard
Finishing Line	Dent Passage in a southerly direction	

Course for Saturday 27th August

Lindeman Island Race – all Classes (Eastern Start Line) **23.5 nm approx.**

COURSE MARK	MARK DESCRIPTION	REQUIRED SIDE
Starting line	Eastern Start Line	
Lindeman Island	Approx S 20° 26.74', E 149° 02.78'	Starboard
Spitfire Rock	Approx S 20° 28.61', E 149° 01.64'	Starboard
Dent Island*	Approx S 20° 20.75', E 148° 55.85'	Port
Finishing Line	Dent Passage in a northerly direction	

ALL OTHER RACES USE THE FOLLOWING GENERAL COURSES

Course 1 **15.5 nm approx**

COURSE MARK	MARK DESCRIPTION	REQUIRED SIDE
Starting line	Southern Starting Line	
Ann Island	Approx S 20° 25.22', E 149° 00.95'	Starboard
Cole Island	Approx S 20° 25.51', E 149° 00.45'	Starboard
Dent Island	Approx S 20° 20.75', E 148° 55.85'	Starboard
Finishing Line	Dent Passage in a southerly direction	Starboard

APPENDIX A - COURSE AND MARK DESCRIPTIONS

Course 2 17.5 nm approx

COURSE MARK	MARK DESCRIPTION	REQUIRED SIDE
Starting line	Southern Starting Line	
Ann Island	Approx S 20° 25.22', E 149° 00.95'	Starboard
Sidney Island	Approx S 20° 26.92', E 149° 00.56'	Starboard
Dent Island	Approx S 20° 20.75', E 148° 55.85'	Starboard
Finishing Line	Dent Passage in a southerly direction	Starboard

Course 3 25.5 nm approx

COURSE MARK	MARK DESCRIPTION	REQUIRED SIDE
Starting line	Southern Starting Line	
Ann Island	Approx S 20° 25.22', E 149° 00.95'	Starboard
Cole Island	Approx S 20° 25.51', E 149° 00.45'	Starboard
Denman Island	Approx S 20° 16.93' E 148° 50.98'	Starboard
Dent Island	Approx S 20° 20.75', E 148° 55.85'	Starboard
Finishing Line	Dent Passage in a southerly direction	Starboard

Course 4 17.5 nm approx

COURSE MARK	MARK DESCRIPTION	REQUIRED SIDE
Starting line	Eastern Starting Line	
Laid Mark	Approx 1.75 nm on bearing given from Committee Vessel	Starboard
Isolated Rock	Approx S 20° 24.35', E 149° 00.39'	Port
Ann Island	Approx S 20° 25.22', E 149° 00.95'	Starboard
Cole Island	Approx S 20° 25.51', E 149° 00.45'	Starboard
Dent Island	Approx S 20° 20.75', E 148° 55.85'	Starboard
Finishing Line	Dent Passage in a southerly direction	

Course 5 20.2 nm approx

COURSE MARK	MARK DESCRIPTION	REQUIRED SIDE
Starting line	Eastern Starting Line	
Laid Mark	Approx 1.75 nm on bearing given from Committee Vessel	Starboard
Isolated Rock	Approx S 20° 24.35', E 149° 00.39'	Port
Ann Island	Approx S 20° 25.22', E 149° 00.95'	Starboard
Sidney Island	Approx S 20° 26.92', E 149° 00.56'	Starboard
Dent Island	Approx S 20° 20.75', E 148° 55.85'	Starboard
Finishing Line	Dent Passage in a southerly direction	

APPENDIX A - COURSE AND MARK DESCRIPTIONS

Course 6 27.2 nm approx

COURSE MARK	MARK DESCRIPTION	REQUIRED SIDE
Starting line	Eastern Starting Line	
Laid Mark	Approx 1.75 nm on bearing given from Committee Vessel	Starboard
Isolated Rock	Approx S 20° 24.35', E 149° 00.39'	Port
Ann Island	Approx S 20° 25.22', E 149° 00.95'	Starboard
Cole Island	Approx S 20° 25.51', E 149° 00.45'	Starboard
Denman Island	Approx S 20° 16.93' E 148° 50.98'	Starboard
Dent Island	Approx S 20° 20.75', E 148° 55.85'	Starboard
Finishing Line	Dent Passage in a southerly direction	

Course 7 26.5 nm approx

COURSE MARK	MARK DESCRIPTION	REQUIRED SIDE
Starting line	Eastern Starting Line	
Baynham Island	Approx S 20° 26.17', E 149° 06.16'	Port
Pentecost Island	Approx S 20° 23.81', E 149° 01.79'	Starboard
Dent Island	Approx S 20° 20.75', E 148° 55.85'	Starboard
Finishing Line	Dent Passage in a southerly direction	Starboard

Course 8 17.5 nm approx

COURSE MARK	MARK DESCRIPTION	REQUIRED SIDE
Starting line	Dent Passage in a northerly direction	
Dent Island	Approx S 20° 20.75', E 148° 55.85'	Port
White Rock	Approx S 20° 18.09', E 148° 48.61'	Starboard
Denman Island	Approx S 20° 16.93' E 148° 50.98'	Starboard
Dent Island	Approx S 20° 20.75', E 148° 55.85'	Starboard
Finishing Line	Dent Passage in a southerly direction	Port

Course 9 21.6 nm approx

COURSE MARK	MARK DESCRIPTION	REQUIRED SIDE
Starting line	Dent Passage in a northerly direction	
Dent Island	Approx S 20° 20.75', E 148° 55.85'	Port
Pine Island	Approx S 20° 22.46', E 148° 53.44'	Starboard
White Rock	Approx S 20° 18.09', E 148° 48.61'	Starboard
Denman Island	Approx S 20° 16.93' E 148° 50.98'	Starboard
Dent Island	Approx S 20° 20.75', E 148° 55.85'	Starboard
Finishing Line	Dent Passage in a southerly direction	

APPENDIX A - COURSE AND MARK DESCRIPTIONS

Course 10 25.6 nm approx

COURSE MARK	MARK DESCRIPTION	REQUIRED SIDE
Starting line	Dent Passage in a northerly direction	
Dent Island	Approx S 20° 20.75', E 148° 55.85'	Port
Pine Island	Approx S 20° 22.46', E 148° 53.44'	Starboard
Denman Island	Approx S 20° 16.93' E 148° 50.98'	Starboard
Pine Island	Approx S 20° 22.46', E 148° 53.44'	Starboard
Dent Island	Approx S 20° 20.75', E 148° 55.85'	Starboard
Finishing Line	Dent Passage in a southerly direction	

Course 11 11.8 nm approx

COURSE MARK	MARK DESCRIPTION	REQUIRED SIDE
Starting line	Dent Passage in a northerly direction	
Dent Island	Approx S 20° 20.75', E 148° 55.85'	Port
Pine Island	Approx S 20° 22.46', E 148° 53.44'	Starboard
Dent Island	Approx S 20° 20.75', E 148° 55.85'	Starboard
Finishing Line	Dent Passage in a southerly direction	

Course 12 22.1 nm approx

COURSE MARK	MARK DESCRIPTION	REQUIRED SIDE
Starting line	Dent Passage in a northerly direction	
Dent Island	Approx S 20° 20.75', E 148° 55.85'	Port
Pine Island	Approx S 20° 22.46', E 148° 53.44'	Starboard
Long Island	Approx S 20° 22.31', E 148° 51.70'	Starboard
White Rock	Approx S 20° 18.09', E 148° 48.61'	Starboard
Dent Island	Approx S 20° 20.75', E 148° 55.85'	Starboard
Finishing Line	Dent Passage in a southerly direction	

Course 13 23.5 nm approx

COURSE MARK	MARK DESCRIPTION	REQUIRED SIDE
Starting line	Dent Passage in a northerly direction	
Dent Island	Approx S 20° 20.75', E 148° 55.85'	Port
Pine Island	Approx S 20° 22.46', E 148° 53.44'	Starboard
Long Island	Approx S 20° 22.31', E 148° 51.70'	Starboard
White Rock	Approx S 20° 18.09', E 148° 48.61'	Starboard
Denman Island	Approx S 20° 16.93' E 148° 50.98'	Starboard
Dent Island	Approx S 20° 20.75', E 148° 55.85'	Starboard
Finishing Line	Dent Passage in a southerly direction	

APPENDIX A - COURSE AND MARK DESCRIPTIONS

Course 14 24.4 nm approx

COURSE MARK	MARK DESCRIPTION	REQUIRED SIDE
Starting line	Eastern Starting Line	
Laid Mark	Approx S 20° 21.00', E 149° 01.30' Approx 1.75 nm on bearing given from Committee Vessel	Starboard
Isolated Rock	Approx S 20° 24.35', E 149° 00.39'	Port
Ann Island	Approx S 20° 25.22', E 149° 00.95'	Starboard
Sidney Island	Approx S 20° 26.92', E 149° 00.56'	Starboard
Pine Island	Approx S 20° 22.46', E 148° 53.44'	Starboard
Dent Island	Approx S 20° 20.75', E 148° 55.85'	Starboard
Finishing Line	Dent Passage in a southerly direction	

Course 15 27.1 nm approx

COURSE MARK	MARK DESCRIPTION	REQUIRED SIDE
Starting line	Eastern Starting Line	
Laid Mark	Approx 1.75 nm on bearing given from Committee Vessel	Starboard
Isolated Rock	Approx S 20° 24.35', E 149° 00.39'	Port
Ann Island	Approx S 20° 25.22', E 149° 00.95'	Starboard
Spitfire Rock mark	Approx S 20° 28.70', E 149° 01.60'	Starboard
Pine Island	Approx S 20° 22.46', E 148° 53.44'	Starboard
Dent Island	Approx S 20° 20.75', E 148° 55.85'	Starboard
Finishing Line	Dent Passage in a southerly direction	

Course 16 28.4 nm approx

COURSE MARK	MARK DESCRIPTION	REQUIRED SIDE
Starting line	Eastern Starting Line	
Laid Mark	Approx 1.75 nm on bearing given from Committee Vessel	Starboard
Isolated Rock	Approx S 20° 24.35', E 149° 00.39'	Port
Ann Island	Approx S 20° 25.22', E 149° 00.95'	Starboard
Cole Island	Approx S 20° 25.51', E 149° 00.45'	Starboard
Pine Island	Approx S 20° 22.46', E 148° 53.44'	Port
White Rock	Approx S 20° 18.09', E 148° 48.61'	Starboard
Denman Island	Approx S 20° 16.93' E 148° 50.98'	Starboard
Dent Island	Approx S 20° 20.75', E 148° 55.85'	Starboard
Finishing Line	Dent Passage in a southerly direction	

APPENDIX A - COURSE AND MARK DESCRIPTIONS

Course 17 21.5 nm approx

COURSE MARK	MARK DESCRIPTION	REQUIRED SIDE
Starting line	Southern Starting Line	
Ann Island	Approx S 20° 25.22', E 149° 00.95'	Starboard
Sidney Island	Approx S 20° 26.92', E 149° 00.56'	Starboard
Pine Island	Approx S 20° 22.46', E 148° 53.44'	Starboard
Dent Island	Approx S 20° 20.75', E 148° 55.85'	Port
Finishing Line	Dent Passage in a southerly direction	

Course 18 24.1 nm approx

COURSE MARK	MARK DESCRIPTION	REQUIRED SIDE
Starting line	Southern Starting Line	
Ann Island	Approx S 20° 25.22', E 149° 00.95'	Starboard
Spitfire Rock	Approx S 20° 28.61', E 149° 01.64'	Starboard
Pine Island	Approx S 20° 22.46', E 148° 53.44'	Starboard
Dent Island	Approx S 20° 20.75', E 148° 55.85'	Port
Finishing Line	Dent Passage in a southerly direction	

Course 19 18.2 nm approx

COURSE MARK	MARK DESCRIPTION	REQUIRED SIDE
Starting line	Dent Passage in a northerly direction	
Dent Island	Approx S 20° 20.75', E 148° 55.85'	Port
Isolated Rock	Approx S 20° 24.35', E 149° 00.39'	Port
Either		
Dent Island	Approx S 20° 20.75', E 148° 55.85'	Starboard
Or		
Hamilton Island	Approx S 20° 20.98', E 148° 58.46'	Port
Then		
Finishing Line	Dent Passage in a southerly direction	

APPENDIX A - COURSE AND MARK DESCRIPTIONS

Course 20 22.3 nm approx

COURSE MARK	MARK DESCRIPTION	REQUIRED SIDE
Starting line	Dent Passage in a northerly direction	
Dent Island	Approx S 20° 20.75', E 148° 55.85'	Port
Sidney Island	Approx S 20° 26.92', E 149° 00.56'	Port
Either		
Dent Island	Approx S 20° 20.75', E 148° 55.85'	Starboard
Or		
Hamilton Island	Approx S 20° 20.98', E 148° 58.46'	Port
Then		
Finishing Line	Dent Passage in a southerly direction	

Course 21 19.9 nm approx

COURSE MARK	MARK DESCRIPTION	REQUIRED SIDE
Starting line	Dent Passage in a northerly direction	
Dent Island	Approx S 20° 20.75', E 148° 55.85'	Port
Isolated Rock	Approx S 20° 24.35', E 149° 00.39'	Starboard
Pine Island	Approx S 20° 22.46', E 148° 53.44'	Starboard
Dent Island	Approx S 20° 20.75', E 148° 55.85'	Starboard
Finishing Line	Dent Passage in a southerly direction	

Course 22 24.1 nm approx

COURSE MARK	MARK DESCRIPTION	REQUIRED SIDE
Starting line	Dent Passage in a northerly direction	
Dent Island	Approx S 20° 20.75', E 148° 55.85'	Port
Sidney Island	Approx S 20° 26.92', E 149° 00.56'	Starboard
Pine Island	Approx S 20° 22.46', E 148° 53.44'	Starboard
Dent Island	Approx S 20° 20.75', E 148° 55.85'	Starboard
Finishing Line	Dent Passage in a southerly direction	

APPENDIX A - COURSE AND MARK DESCRIPTIONS

WINDWARD / LEEWARD COURSES

- A 4 The following course descriptions lists the order in which marks are to be passed and the side each mark is be rounded.
- A 5 The course to be sailed for each class will be signalled by a Numeral Board displayed from the committee vessel. The course to be sailed may also be broadcast on the designated course VHF Channel.
- A 6 A board displaying the approximate compass bearing from the committee vessel to Mark 1 and Mark 2 will be displayed from the committee vessel.

- A 7 Mark 1 and Mark 2 will be laid to windward of the starting line.
The Gate will be laid approximately 50 metres to windward of the starting line. (Note: The Gate may be laid after the starting signal).
If only one Gate mark is set, yachts shall round that mark to port.
- A 8 When changing the position of the next mark, the race committee will lay a change mark(s). Any subsequent marks may be relocated to maintain the original course configuration. Further changes of that mark will revert to the original mark(s).

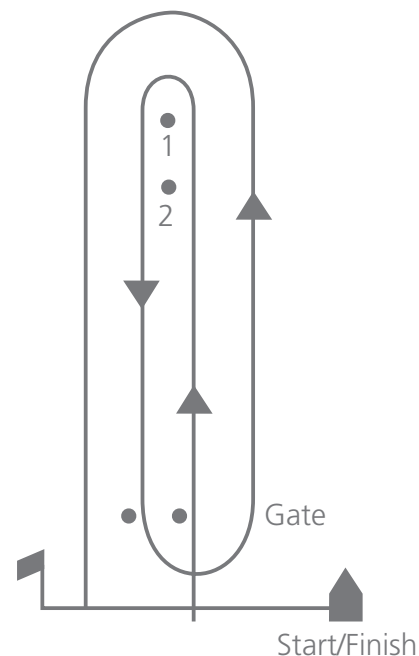
COURSE MARK MARK DESCRIPTION

Start / Finish Mark	White Audi cylindrical inflatable buoy
Mark 1	Red & white Audi cube shaped inflatable buoy
Mark 2	White Audi cylindrical inflatable buoy
Gate	Red & white Audi cube shaped inflatable buoys

COURSE SIGNAL

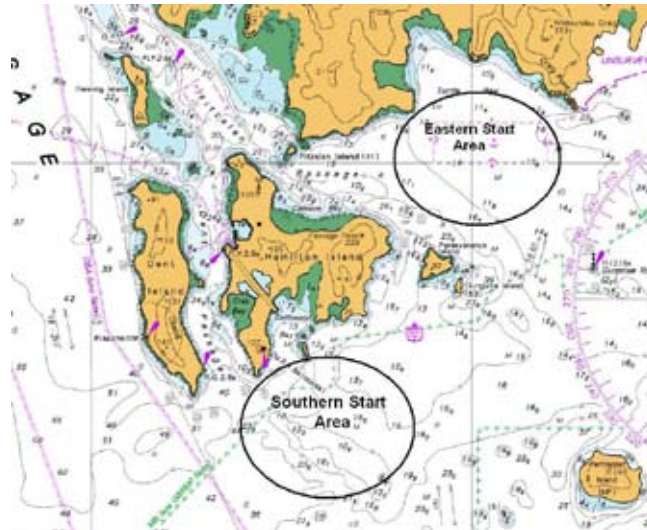
COURSE CONFIGURATION

COURSE SIGNAL	COURSE CONFIGURATION
	All Marks to PORT
W1	Start – 1 – Finish
W2	Start – 1 – Gate – 1 – Finish
W3	Start – 1 – Gate – 1 – Gate – 1 – Finish
W4	Start – 2 – Finish
W5	Start – 2 – Gate – 2 – Finish
W6	Start – 2 – Gate – 2 – Gate – 2 – Finish



APPENDIX A - COURSE AND MARK DESCRIPTIONS

Start Areas



Lindeman Island Race



Double Cones Race



Club Marine Classic Long Race



Molle Island Race



APPENDIX A - COURSE AND MARK DESCRIPTIONS

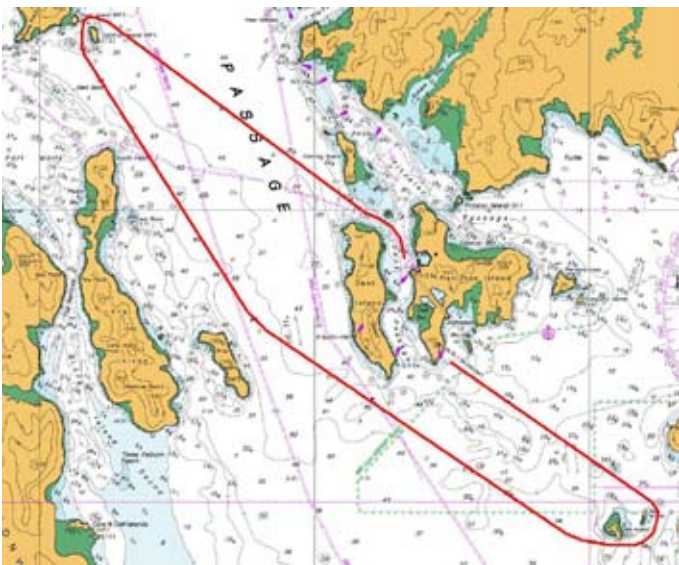
Course 1



Course 2



Course 3



Course 4



APPENDIX A - COURSE AND MARK DESCRIPTIONS

Course 5



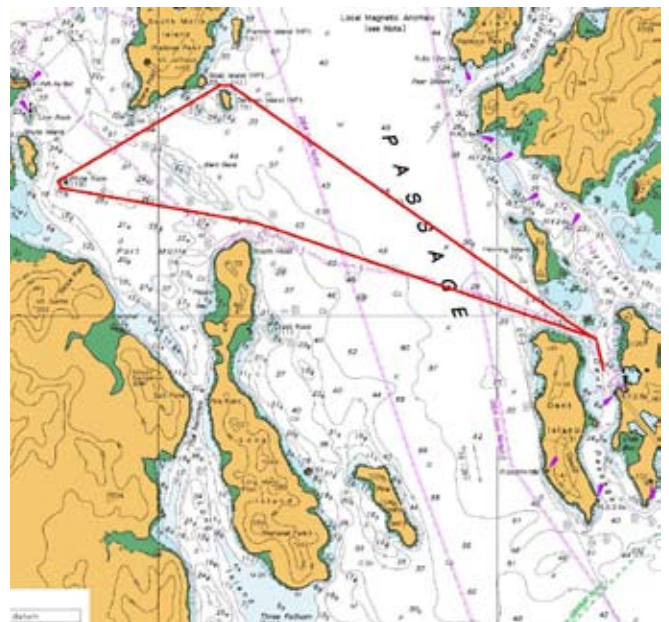
Course 6



Course 7



Course 8



APPENDIX A - COURSE AND MARK DESCRIPTIONS

Course 13



Course 14



Course 15



Course 16



Course 21



Course 22



IMPORTANT RACEWEEK PHONE NUMBERS

EMERGENCY PROCEDURES & COMMUNICATIONS

On Island Emergencies

- From an Island phone: 555

Inform operator of known relevant details and be guided by the operator. Relevant details include location of incident, number of injured persons etc. The trained operator will assess the information and notify the appropriate agency.

Off Island Emergencies

- Yacht returning to Hamilton Island: 4946 8555

Inform operator of known relevant details and be guided by the operator. Relevant details include location of incident, number of injured persons etc. The operator will coordinate the most appropriate emergency response.

RETURN TO EITHER A1 OR A2 JETTY.

Off Island Emergencies

- Yacht not returning to Hamilton Island Heading elsewhere: 000

Inform operator of known relevant details and be guided by the operator. Relevant details include location of incident, number of injured persons etc. The operator will coordinate the most appropriate emergency response.

Off Island Emergencies

- Out of mobile range: VHF channel 16 or 68

To contact Hamilton Island Marine Office. Inform marine staff of all known details of incident. Marine Office staff will coordinate the most appropriate emergency response.

ALL VESSELS WITH EMERGENCIES ON BOARD ARE TO GO TO A1 & A2 JETTIES.

IMPORTANT RACE WEEK NUMBERS

Race Week Office	07 4946 8158	Ext 58158
Race Week Office	07 4946 8159	Ext 58159
Race Week Office Fax	07 4946 8161	Ext 58161
Marina Office	07 4946 8353	Ext 58353
Hamilton Island Medical Centre	07 4946 8243	Ext 58243
Emergency	07 4946 8555	Ext 555

Local Marine Industry

Hamilton Island Shipyard/Chandlery	07 4946 8138	Ext 58138
Airlie Sails	07 4946 1125	
Hawkes Boatyard	07 4946 6700	
Shute Harbour Slipway/Chandlery	07 4948 8239	
Warfe & Garms (boatbuilders)	07 4948 2244	
Meridien Marinas Abel Point	07 4946 2400	
Whitsunday Sailing Club	07 4946 6138	
Abel Point Diesel Centre	07 4946 5411	
Quadrant Marine Chandlery	07 4946 4033	
Airlie Yachting Serv. (Hydraulics)	0404 416 614	

Travel

Fantasea Cruises	07 4946 5111	Ext 58806
Jetstar	13 15 38	
Virgin	13 67 89	
QANTAS	13 13 13	
Hamilton Island Airport	07 4946 8246	Ext 58246
Skystar	07 4946 8246	Ext 58246

Government

Water Police	07 4948 8888	
Mackay Customs	07 4965 7100 and 1300 363 263	

Resort Numbers

Hamilton Island Resort	07 4946 9999	Ext 9
Hamilton Island Reservations	13 7333	
Tour Desk	07 4946 8305	Ext 58305
Reception Reef View Hotel	07 4946 9999	Ext 20012
Reception Bungalows	07 4946 9999	Ext 20012
Reception Beach Club Resort	07 4946 8000	Ext 58000
Reception Holiday Homes	07 4946 8994	Ext 58994

Resort Facilities

Resort Buggy Hire	07 4946 8263	Ext 58263
Cruise Indigo	07 4946 8613	Ext 58613
HI Photography Store	07 4946 8690	Ext 58690
Westpac	07 4969 9455	
Post Office	07 4946 8238	Ext 58238
Hamilton Island Air	07 4946 8249	Ext 58249

Food & Beverage

Bommie Restaurant	07 4948 9433	Ext 59433
Mariners Restaurant	07 4946 8628	Ext 58628
Denison Star Restaurant	07 4946 8613	Ext 58613
Romanos Restaurant	07 4946 8212	Ext 58212
Steak House Restaurant	07 4946 8019	Ext 58019
Pool Terrace Restaurant	07 4946 9999	Ext 20048
Marina Tavern	07 4946 8839	Ext 58839
Manta Ray Café	07 4946 8213	Ext 58213
Sails Restaurant	07 4946 8562	Ext 58562
Marina Deli	07 4946 8224	Ext 58224
Popeye's Fish & Chips	07 4946 8610	Ext 58610
Bob's Bakery	07 4946 8281	Ext 58281
Bottle Shop	07 4946 8632	Ext 58632
General Store	07 4946 8626	Ext 58626

OTHER INFORMATION

CREW LISTS

Important! All yachts sailing the Club Marine Classic Long Race on Monday 23rd are reminded they must submit a crew list with details of all crew members and their next of kin before starting the race.

PRACTICE SAILING - FRIDAY 19TH AUGUST

For crews wishing to do some practise prior to racing, we will be laying a windward / leeward course on Friday 19th.

The course will be laid to the west of the northern end of Dent Island with marks approximately one mile apart. The course will be laid by 10am and will be removed at 3:00pm.

TIDE PREDICTIONS FOR DENT PASSAGE

Sat 20th		Sun 21st		Mon 22nd		Tue 23rd	
Time	Ht	Time	Ht	Time	Ht	Time	Ht
0142	2.31	0246	2.08	0440	1.99	0050	1.35
0822	1.14	0933	1.21	1056	1.15	0609	2.10
1506	2.44	1639	2.50	1802	2.71	1204	0.98
2117	1.62	2328	1.57			1859	2.99
Sunset	1753	Sunset	1753	Sunset	1753	Sunset	1754
Wed 24th		Thu 25th		Fri 26th		Sat 27th	
Time	Ht	Time	Ht	Time	Ht	Time	Ht
0136	1.11	0214	0.89	0250	0.72	0324	0.58
0706	2.28	0751	2.46	0832	2.63	0912	2.78
1257	0.77	1341	0.56	1421	0.39	1500	0.26
1943	3.27	2023	3.51	2102	3.69	2139	3.82
Sunset	1754	Sunset	1754	Sunset	1754	Sunset	1755

WEATHER

Experienced weather guru, and yachtsman, Ken Batt, will provide to all competitors each day detailed weather information which will include an overall synopsis for the race area, temperature and sea conditions, a detailed wind forecast and outlooks for the days ahead.

Call down to the Race Office on Front Street each morning to collect your copy.

INTERNATIONAL JURY

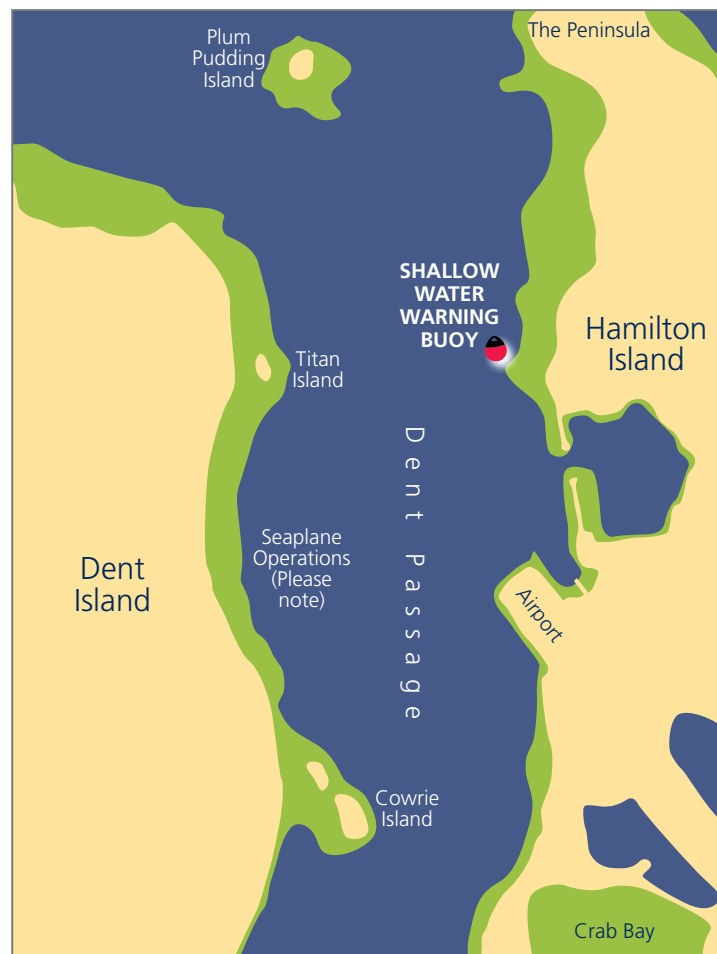
Hamilton Island Yacht Club as the organising authority appoints the following International Jury in accordance with RRS 70.5, 91(b) and Appendix N:-

Bevan Woolley, Chair	(IJ)	New Zealand
Lister Hughes	(IJ)	Australia
Tom Shephard	(IJ)	Hong Kong
Mike Urwin	(IJ)	Great Britain
Richard Slater	(IJ)	Australia
Gary Manuel	(NJ)	Australia

The decisions of the International Jury are not appealable in accordance with RRS 70.5

SHALLOW WATER WARNING BUOY

A red round buoy may be laid to mark a shallow area of Dent Passage. This buoy is not a mark of any course and is only intended to remind yachts that there is shallow water in the vicinity.



AIRCRAFT ON APPROACH TO HAMILTON ISLAND

SAILORS, PLEASE BE AWARE OF MEDIA CRAFTS

During Race Week this year there will be a number of media following the racing both from the water and from the air.

The skippers of the media boats and the pilots of the helicopters will make every effort to make sure they do not interfere with the racing as much as they can. However there may be occasions when they find themselves in a position where the wake from a boat or the down wash from the rotors of the helicopters may briefly affect the racing yachts.

This is sometimes unavoidable and we ask you to understand that they are trying to get the best shots for the media exposure the regatta deserves.

Thank you for your consideration in this matter, we appreciate your help.



EVERY BOAT HAS A DIFFERENT LIMIT. When sailing the Dent Passage, ensure the runway approach path is clear. CHECK YOUR MAST HEIGHT AGAINST THE GRAPH AND KNOW YOUR DISTANCE LIMIT BEFORE YOU SAIL OUT.

RUNWAY CLEARANCE ZONE

Safety is of as critical importance to Jetstar and Jetstar pilots as it is of serious sailors. Jetstar and Hamilton Island Yacht Club have been working closely to ensure flight arrivals and departures do not coincide with race starts. Nevertheless, Hamilton Island Yacht Club committee boats will be patrolling Dent Passage during starts to advise of approaching aircraft.

YACHTS ARE HAZARDOUS TO AIRCRAFT

During landing, a Jetstar, Airbus A320 Aircraft can weigh up to 66,000kg and travels at an airspeed of 140 knots. Our normal approach path is a 3-degree slope. For Jetstar to have the required obstacle clearance above your mast, plot your mast height against the required distance from the runway.

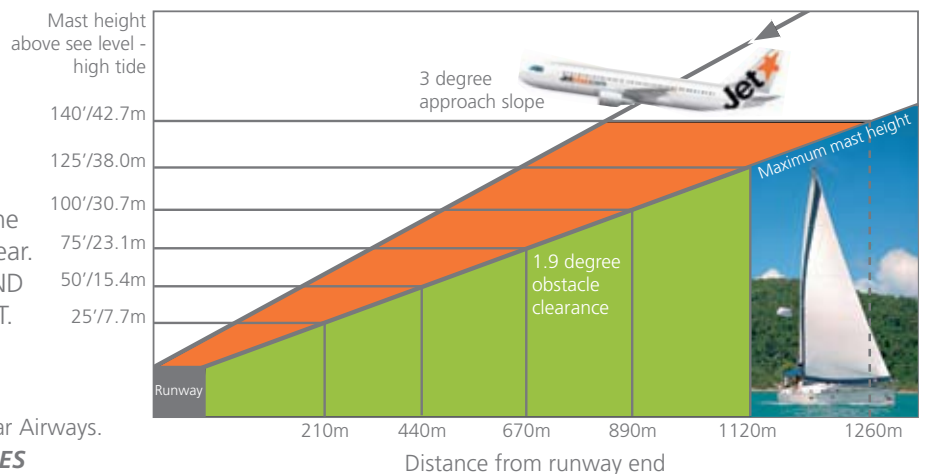
Conducting a missed approach can present a dangerous situation. A jet aircraft can take up to 6 seconds to start climbing. During this time it will travel over 1400 feet (431 metres) and descend about 50 feet.

AIRCRAFT ARE HAZARDOUS TO YACHTS

Have you ever sailed in the dirty air from another boat? Try sailing in the dirty air from an Aircraft. Wake turbulence generated from the wind of an aircraft can cause sudden and violent wind changes (up to 80 feet/sec), possibly resulting in equipment damages or injuries.

Mast Feet	Height Metres	Distance out
30	9.1	250m
40	12.1	340m
50	15.4	440m
60	18.4	530m
70	21.4	620m
80	24.4	710m
90	27.4	800m
100	30.7	890m
110	33.7	990m
120	36.7	1080m
130	39.7	1170m
140	42.7	1260m

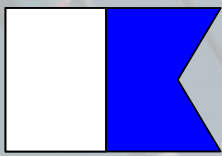
Vortices have enough energy to create multiple whirlwinds lifting water from the surface. Vortices can exist for in excess of 3 minutes. Jet blast from the aircraft engines can also be dangerous. Full power is required for take off on Hamilton Island's short runway. The Airbus A320 produces 26,500 lbs of thrust per engine. The thrust can carry aft of the engine for at least 1150'/348m where the wind gusts will be in excess of 40 knots.



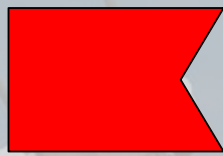
This information is presented by Jetstar Airways.

jetstar.com/holidays ALL DAY, EVERY DAY, LOW FARES

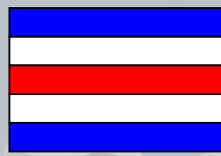




A alpha



B bravo



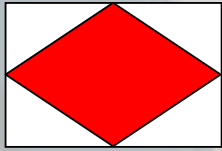
C charlie



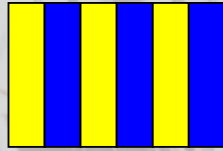
D delta



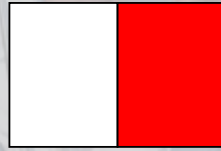
E echo



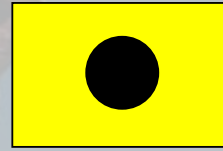
F foxtrot



G golf



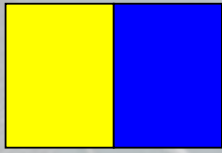
H hotel



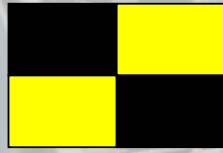
I india



J juliet



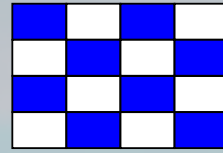
K kilo



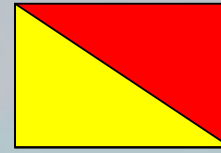
L lima



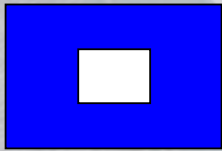
M mike



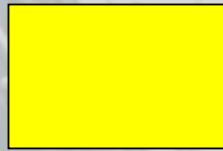
N november



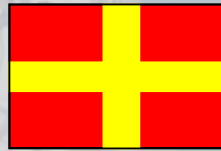
O oscar



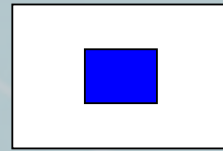
P papa



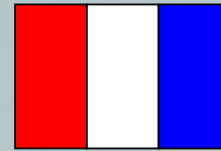
Q quebec



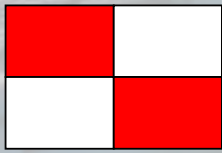
R romeo



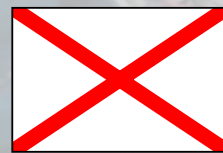
S sierra



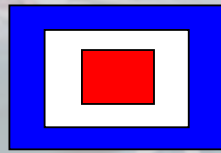
T tango



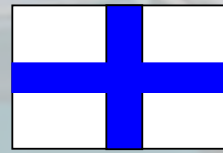
U uniform



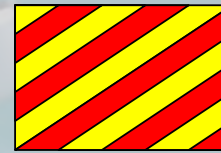
V victor



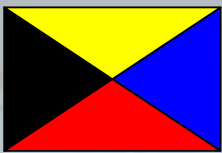
W whiskey



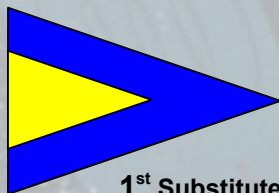
X xray



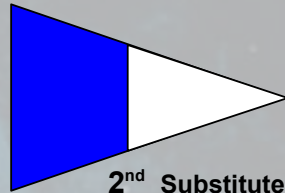
Y yankee



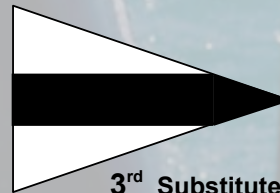
Z zulu



1st Substitute



2nd Substitute



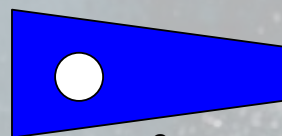
3rd Substitute



Answering Pennant



1



2



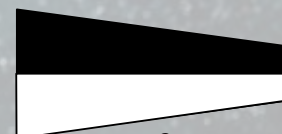
3



4



5



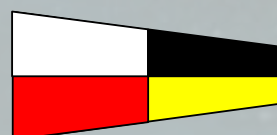
6



7



8



9



0