



19 - 26 August | SAILING INSTRUCTIONS

 **Audi**
Hamilton Island
Race Week 2017

SAILING INSTRUCTIONS

1. Rules

- 1.1 The regatta will be governed by the rules as defined in the Racing Rules of Sailing (RRS) of World Sailing (WS), Special Regulations of Australian Sailing (AS), the 2017 IRC rule (parts A, B & C), where applicable including AS prescriptions, all as modified by these Sailing Instructions.
- 1.2 RRS 52 is amended to permit powered winches for boats over 14.0m LOA.
- 1.3 Boats not racing in an IRC Class (that allows variable and/or movable ballast) shall request permission from the race committee to use movable and/or variable ballast for the purpose of increasing stability. Any such request must be accompanied by full details of the system involved, and any such system will be taken into account in establishing the yacht's handicap. Stored power may be used for the operation of movable ballast systems. RRS 51 and 52 are modified to the extent required by this paragraph.
- 1.4 Boats entered in Non-Spinnaker Class shall not carry spinnakers or Code Zero sails, but may use a spinnaker pole to pole out one headsail. Headsails shall be fully hanked, or attached to the main forestay by means of a luff groove device.
- 1.5 Nothing in the Notice of Race or Sailing Instructions relieves a boat of her responsibility under civil law to comply with the International Regulations for Preventing Collisions at Sea or local regulations.
- 1.6 Between sunset and sunrise, when a boat cannot determine with certainty what tack another boat is on, she shall keep clear of that boat. Competitors are reminded that part of the definition of "room" includes taking into account the existing conditions (including visibility).
- 1.7 A current or fully amended paper chart AUS252 shall be carried on board.
- 1.8 RRS 55 is amended by adding the following: 'However, discarding cotton, wool or any other biodegradable material when setting a sail is permitted'.
- 1.9 The owner and skipper of all boats shall ensure that no entities form unauthorised associations between themselves (and their products or services) and the event (otherwise known as "ambush marketing") or any "hijack signage" is carried out by or on behalf of themselves or their sponsors with reference to the event and that nothing else is done which might undermine the event, the rights of the event sponsor, or any other sponsor or participant in the event.
- 1.10 Before the first race of the regatta, all boats in IRC Classes shall submit to the regatta office a declaration of all the sails carried on board for the duration of the regatta (IRC Rule 21.1.5(d)).
- 1.11 In accordance with RRS 42(i), a boat may use her engine whilst racing:
 - (a) to avoid interfering with commercial traffic or aircraft operations, or
 - (b) if she has run aground, or
 - (c) to avoid running aground.
 - (d) to avoid a collision.The engine use must be logged and a declaration made at the race office as soon as possible after finishing.

The race committee will decide what penalty (if any) shall apply. This alters rule A5 60.1 and 60.3.
- 1.12 Boats shall not use 3G/4G Boosters or Signal Repeaters at any time including when not racing or within the Hamilton Island Marina.

- 1.13 Boats shall not use boat tracking, photography, or video for commercial purposes without prior written approval of the organising authority.
- 1.14 Unauthorised use of Unmanned Aerial Vehicles ("UAV" aka "drone") anywhere on Hamilton Island and surrounding waters is prohibited at any time. Any boat associated with an unauthorised UAV will be liable to protest and the subsequent penalty shall be Disqualification Not Excludable (DNE).

2. Aircraft Movements (applies at all times racing or not)

- 2.1 During aircraft movements, boats shall keep clear of the designated Dent Passage Aircraft Flight Path Zone as shown on Maritime Safety Queensland Notice to Mariners 977 (Permanent) of 2010 and the height restrictions from the end of the runway.
- 2.2 During aircraft movements this area is deemed an obstruction for the purposes of Part 2 of the RRS.
- 2.3 During aircraft movements the race committee may have Marshal or race committee vessels in the vicinity of the designated Dent Passage Aircraft Flight Path Zone. Boats shall observe any directions given by the Marshal or race committee vessels.
- 2.4 Marshal vessels will be identified by displaying a flag with a black letter "M". Race committee vessels will be identified by displaying a flag with black letters "RC".

Boats shall maintain a listening watch on the VHF race frequency when in the vicinity of Dent Passage for directions from the race committee.
- 2.5 Boats failing to comply with instructions from the race committee, Marshall or race committee vessels may be protested by the race committee only. This alters RRS 60.1 and 60.3. The penalty for breaking this instruction shall be Disqualification Not Excludable (DNE).

3. Responsibility

- 3.1 All those taking part in these races do so at their own risk and responsibility. Neither Hamilton Island Yacht Club Inc. nor any other club or company connected with the organising of these races is responsible for the seaworthiness of a boat whose entry is accepted, nor for the sufficiency or adequacy of its equipment. Owners shall accept full responsibility for the seaworthiness and safe navigation of their boats and competence of their crews.
- 3.2 Boat owners, skippers and crew should be aware that there may be uncharted obstacles under the waters on which races are held. Such uncharted obstacles include reefs, bomoras and rocks which could be a danger to boats and crews. Hamilton Island Yacht Club Inc. accepts no responsibility for any damage to or loss of any boat or for injury to or death of any crew person which may occur as a result of a collision with any underwater obstacle. All participants compete in races at their own risk.
- 3.3 Attention is drawn to Fundamental Rule 4, which states "The responsibility for a boat's decision to participate in a race or to continue racing is hers alone".

4. Regatta Office and Notice Board

The Regatta Office will be located on the top floor of the Hamilton Island Yacht Club (HIYC) building. The official notice board will be the online notice board located on the event website front page (www.hamiltonislandraceweek.com.au). Additionally, an electronic display located in the foyer of the Hamilton Island Yacht Club will also show official notices.

5. Pennants, Boom Stickers, Hull Decals and Identification Numbers

- 5.1 Division flags, boom stickers and hull decals may be provided by the event sponsors. If provided, flags shall be flown from the backstay, or conspicuously near the stern, at all times whilst racing, boom stickers shall be attached to the boom and hull decals shall be attached to the topsides approximately two metres from the bow. Boats failing to comply with this may be protested by the race committee only. This alters RRS 60.1 and 60.3.
- 5.2 Boats that do not have sail numbers or have sails with conflicting sail numbers, shall display a bow number, which will be provided. The bow number shall be located on both sides of the hull forward of any sponsors decals. This amends RRS 77.

6. Signals Made Ashore

- 6.1 Signals made ashore will be displayed from the flag pole on the Hamilton Island Yacht Club deck.
- 6.2 When a signal is displayed over a class flag, it shall apply to that class only.

9. Class Flags

Class	Class Flag	Backstay Flag
IRC Racing	Gold	Gold
IRC Passage Division 1	"1"	Numeral "1"
IRC Passage Division 2	"2"	Numeral "2"
Racer/Cruiser Division	"6"	Numeral "6"
Cruising Division 1	Pink	Pink
Cruising Division 2	Light Blue	Light Blue
Cruising Division 3	Fluro Yellow	Fluro Yellow
Cruising Division 4	Orange	Orange
Cruising Division 5	Yellow with Black Stripe	Yellow with Black Stripe
Trailer Yachts	Purple	Purple
Non-Spinnaker Division 1	Grey	Grey
Non-Spinnaker Division 2	White	White
Multihull Racing	"5"	Numeral "5"
Multihull Cruising Division 1	Fluro Green	Fluro Green
Multihull Cruising Division 2	Black/White	Black/White

Boats shall fly the provided backstay flag above any event sponsors pennant whilst racing and shall be flown from the backstay or conspicuously from the stern for boats without a backstay.

10. Courses and Marks of the Course

See appendix "A".

11. Race Committee Vessels

Race committee vessels will display the HIYC burgee when on station.

7. Notices to Competitors

- 7.1 Notices to competitors will be posted on the official notice board and also the online notice board on the event website.
- 7.2 Any change to Sailing Instructions made ashore will be posted at least one hour before the race affected and the Notice to Competitors will be signalled by the display of Code Flag "L" ashore.
- 7.3 Changes to the Sailing Instructions made afloat, or from the Dent Passage starting line during a scheduled start, will be indicated by the display of Code Flag 3rd Substitute accompanied by two sound signals. The change will be communicated orally on the designated course VHF channel and/or in writing.

8. Daily Reporting

The race committee will contact each boat by SMS between 0830 hrs and 0900 hrs each race day. Each boat shall respond to the SMS within ninety (90) minutes of her scheduled start time indicating her intention to start and the number of Persons on Board (P.O.B.).

12. Schedule Of Events

Date	Class	Event
Sunday 6 Aug	All Classes	Entries close
Friday 18 Aug	All Classes	Registration - 1400 hrs to 1700 hrs
Saturday 19 Aug	All Classes	Registration - 1000 hrs to 1700 hrs
Sunday 20 Aug	All Classes	Short Around-the-Islands Race
Monday 21 Aug	IRC Racing	W/L Races (up to 2 races)
	All Other Classes	Short Around-the-Islands Race
Tuesday 22 Aug	IRC Racing & Multihull Racing	Club Marine Classic Long Race
	Racer/Cruiser, IRC Passage Divisions 1 & 2	Club Marine Classic Medium Distance Race
	All Other Classes	Short Around-the-Islands Race
Wednesday 23 Aug	All Classes	Lay Day - On-Shore Activities
Thursday 24 Aug	All Classes	Prix d'Elegance Parade 0900 - 1000
	IRC Racing	1 x W/L Course & Short Around-the-Islands Race
	All Other Classes	Short Around-the-Islands Race
Friday 25 Aug	Racer/Cruiser Class & Multihull Racing	1 x W/L Course & Short Around-the-Islands Race
	All Other Classes	Short Around-the-Islands Race
Saturday 26 Aug	All Classes	Short Around-the-Islands Race
	All Classes	Presentation of Trophies

The race committee may make changes to this schedule at any time.

Sunday 20 August

Start Time	Class	Course	Starting Area	VHF
1130	Trailer Yacht	Island	Dent Passage	Ch 77
1135	Multihull Cruising Division 2	Island	Dent Passage	Ch 77
1140	Multihull Cruising Division 1	Island	Dent Passage	Ch 77
1145	Non-Spinnaker Division 2	Island	Dent Passage	Ch 77
1150	Non-Spinnaker Division 1	Island	Dent Passage	Ch 77
1155	Cruising Division 5	Island	Dent Passage	Ch 77
1200	Cruising Division 4	Island	Dent Passage	Ch 77
1205	Cruising Division 3	Island	Dent Passage	Ch 77
1210	Cruising Division 2	Island	Dent Passage	Ch 77
1215	Cruising Division 1	Island	Dent Passage	Ch 77
1220	Racer/Cruiser	Island	Dent Passage	Ch 77
1225	IRC Passage Division 2	Island	Dent Passage	Ch 77
1230	IRC Passage Division 1	Island	Dent Passage	Ch 77
1235	Multihull Racing	Island	Dent Passage	Ch 77
1240	IRC Racing	Island	Dent Passage	Ch 77

Monday 21 August

Start Time	Class	Course	Starting Area	VHF
1100	Trailer Yacht	Island	Dent Passage	Ch 77
1105	Non-Spinnaker Division2	Island	Dent Passage	Ch 77
1110	Non-Spinnaker Division 1	Island	Dent Passage	Ch 77
1115	Multihulls Cruising Division 2	Island	Dent Passage	Ch 77
1120	Multihulls Cruising Division 1	Island	Dent Passage	Ch 77
1125	Cruising Division 5	Island	Dent Passage	Ch 77
1130	Cruising Division 4	Island	Dent Passage	Ch 77
1135	Cruising Division 3	Island	Dent Passage	Ch 77
1140	Cruising Division 2	Island	Dent Passage	Ch 77
1100	Cruising Division 1	Island	Eastern	Ch 72
1105	Racer/Cruiser	Island	Eastern	Ch 72
1110	IRC Passage Division 2	Island	Eastern	Ch 72
1115	IRC Passage Division 1	Island	Eastern	Ch 72
1120	Multihull Racing	Island	Eastern	Ch 72
1200	IRC Racing	W/L (up to 2 races)	Eastern	Ch 72

For multiple races, subsequent races will be held as soon as practicable after the completion of the previous race.

Tuesday 22 August

Start Time	Class	Course	Starting Area	VHF
0900	IRC Racing	Island	Dent Passage	Ch 77 & 81
0905	Multihull Racing	Island	Dent Passage	Ch 77 & 81
0910	IRC Passage Division 1	Island	Dent Passage	Ch 77 & 81
0915	IRC Passage Division 2	Island	Dent Passage	Ch 77 & 81
0920	Racer/Cruiser	Island	Dent Passage	Ch 77 & 81
0940	Trailer Yacht	Island	Eastern	Ch 72
0945	Cruising Division 5	Island	Eastern	Ch 72
0950	Cruising Division 4	Island	Eastern	Ch 72
0955	Non-Spinnaker Division 2	Island	Eastern	Ch 72
1000	Non-Spinnaker Division 1	Island	Eastern	Ch 72
1005	Multihull Cruising Division 2	Island	Eastern	Ch 72
1010	Multihull Cruising Division 1	Island	Eastern	Ch 72
1015	Cruising Division 3	Island	Eastern	Ch 72
1020	Cruising Division 2	Island	Eastern	Ch 72
1025	Cruising Division 1	Island	Eastern	Ch 72

Wednesday 23 August

Lay Day All Classes - On-Shore Activities

Thursday 24 August

Start Time	Class	Course	Starting Area	VHF
0900 - 1000	All Classes - Prix d'Elegance Parade		Dent Passage	Ch 77
1030	Trailer Yacht	Island	Dent Passage	Ch 77
1035	Multihull Cruising Division 2	Island	Dent Passage	Ch 77
1040	Multihull Cruising Division 1	Island	Dent Passage	Ch 77
1045	Non-Spinnaker Division 2	Island	Dent Passage	Ch 77
1050	Non-Spinnaker Division 1	Island	Dent Passage	Ch 77
1055	Cruising Division 5	Island	Dent Passage	Ch 77
1100	Cruising Division 4	Island	Dent Passage	Ch 77
1105	Cruising Division 3	Island	Dent Passage	Ch 77
1110	Cruising Division 2	Island	Dent Passage	Ch 77
1115	Cruising Division 1	Island	Dent Passage	Ch 77
1100	Racer/Cruiser	Island	Eastern	Ch 72
1105	IRC Passage Division 2	Island	Eastern	Ch 72
1110	IRC Passage Division 1	Island	Eastern	Ch 72
1115	Multihull Racing	Island	Eastern	Ch 72
1130	IRC Racing	1 x W/L & 1 x Island Race	Eastern	Ch 72

For multiple races, subsequent races will be held as soon as practicable after the completion of the previous race.

Friday 25 August

Start Time	Class	Course	Starting Area	VHF
1045	Trailer Yacht	Island	Dent Passage	Ch 77
1050	Multihull Cruising Division 2	Island	Dent Passage	Ch 77
1055	Multihull Cruising Division 1	Island	Dent Passage	Ch 77
1100	Non-Spinnaker Division 2	Island	Dent Passage	Ch 77
1105	Non-Spinnaker Division 1	Island	Dent Passage	Ch 77
1110	Cruising Division 5	Island	Dent Passage	Ch 77
1115	Cruising Division 4	Island	Dent Passage	Ch 77
1120	Cruising Division 3	Island	Dent Passage	Ch 77
1125	Cruising Division 2	Island	Dent Passage	Ch 77
1130	Cruising Division 1	Island	Dent Passage	Ch 77
1110	IRC Racing	Island	Eastern	Ch 72
1115	IRC Passage Division 1	Island	Eastern	Ch 72
1120	IRC Passage Division 2	Island	Eastern	Ch 72
1130	Multihull Racing	1 x W/L & 1 x Island Race	Eastern	Ch 72
1135	Racer/Cruiser	1 x W/L & 1 x Island Race	Eastern	Ch 72

For multiple races subsequent races, will be held as soon as practicable after the completion of the previous race.

Saturday 26 August

Start Time	Class	Course	Starting Area	VHF
1030	Trailer Yacht	Island	Eastern	Ch 72
1035	Multihull Cruising Division 2	Island	Eastern	Ch 72
1040	Multihull Cruising Division 1	Island	Eastern	Ch 72
1045	Non-Spinnaker 2	Island	Eastern	Ch 72
1050	Non-Spinnaker 1	Island	Eastern	Ch 72
1055	Cruising Division 5	Island	Eastern	Ch 72
1100	Cruising Division 4	Island	Eastern	Ch 72
1105	Cruising Division 3	Island	Eastern	Ch 72
1110	Cruising Division 2	Island	Eastern	Ch 72
1100	Racer/Cruiser	Island	Dent Passage	Ch 77
1105	IRC Passage Division 2	Island	Dent Passage	Ch 77
1110	IRC Passage Division 1	Island	Dent Passage	Ch 77
1115	Cruising Division 1	Island	Dent Passage	Ch 77
1120	Multihull Racing	Island	Dent Passage	Ch 77
1125	IRC Racing	Island	Dent Passage	Ch 77

12.2 Starting Lines

Dent Passage starting line. The starting line will be between the flagstaff on the Hamilton Island Yacht Club displaying the Hamilton Island Yacht Club burgee and a red and white Audi inflatable buoy laid in Dent Passage.

Eastern starting line. The starting line will be laid in the area between Catseye Bay and Craig Point to the North-East of Hamilton Island, and will be between the signal mast displaying the Hamilton Island Yacht Club burgee on the race committee vessel, and a white Audi inflatable buoy at the Port end.

Note: For on-water starts, an inner limit buoy may be laid near the race committee vessel approximately on the starting line. Boats shall not pass between this buoy and the race committee vessel at any time. A breach of this SI is open to protest by the race committee only. This alters RRS 60.1 and 60.3.

13. Recalls

- 13.1 Following a General Recall the new start will be five (5) minutes after the recalled start.
One minute after the recalled start the First Substitute will be lowered, the class flag(s) for the class to be re-started will be hoisted along with the Preparatory Signal. (This changes RRS 29.2 and Race Signals "First Substitute").
- 13.2 Following a General Recall the start(s) for the following class(es) will be delayed accordingly.
- 13.3 In addition to the requirements of RRS 29, the race committee MAY call yachts on the designated course VHF channel.
- 13.4 A yacht retuning to start after being signalled as OCS may, at the discretion of the race committee be given an elapsed time penalty of 5 minutes or greater in lieu of returning to start correctly. If applied, this will be communicated by VHF or on the water by an RC vessel. This alters RRS 28.1.

14. Shortening the Course

Island Passage courses may be shortened at any part of the course. Boats shall finish between the race committee vessel displaying Code Flag "S" and the inflatable mark moored nearby, or the nearest point of land if no mark is laid. This changes RRS 32 and Race Signals.

15. Alternative Penalties

For Windward / Leeward Courses W1 - W6 and all Multihull races, the Two-Turns penalty (RRS 44.1) is changed to a One Turn penalty.

16. Yachts Not Finishing

Yachts not finishing a race shall inform the race committee on the appropriate course VHF channel, or by calling the Regatta Office on 07 4946 8159.

17. The Finish

- 17.1 **Yacht Club finish line.** The finish line will be in Dent Passage and will be between the flagstaff on the Hamilton Island Yacht Club displaying the Hamilton Island Yacht Club burgee and a red and white Audi inflatable buoy laid in Dent Passage. The finishing line may be illuminated during the hours of darkness at each end by blue flashing strobe lights. When crossing the finishing line during the hours of darkness boats shall illuminate her sail number or bow number and shall confirm her identify on the course VHF channel by radio.
- 17.2 **Golf Course jetty finish line.** The finish line will be in Dent Passage and will be located to the south west of the Hamilton Island Airport runway. Boats will finish between the red and white Audi buoy at the eastern end of the line and either a staff displaying an orange flag on a vessel anchored at the western end or if a finishing vessel is not on station, a flagstaff displaying an orange flag on the Dent Island Golf Course jetty (approx S 20° 21.30', E 148° 56.31').

- 17.3 **Race Committee vessel finish line.** The finish line will be in a similar position to the starting line or as designated in the course instructions and will be between the signal mast displaying the Hamilton Island Yacht Club burgee, on the race committee vessel and an inflatable buoy moored nearby.

18. Time Limits

18.1

Course	Time Limit
Club Marine Classic Long Distance Race	14 hours
Club Marine Classic Medium Distance Race	9 hours
Windward/Leeward Courses W1 - W6	2.5 hours or sunset whichever is earlier
All Other Courses	6.5 hours or sunset whichever is earlier

- 18.2 A boat still racing when her time limit expires will be scored points equal to the number of boats finishing within the time limit plus 25% of the number of starters in her class or division, rounded to the nearest whole number, but no more points than the number of starters. Such boats will be scored Time Limit Expired (TLE). This changes RRS 35, A4.2 and A5. Prior to the time limit expiring, the race committee may offer the score of TLE to boats still racing that may not make the time limit. This changes rule 28.1, 35, A4.2 and A5.

19. Protests

- 19.1 A national jury has been appointed, and approved by AS in accordance with AS prescription Addendum A, and the right of appeal will be denied in accordance with RRS 70.5.
- 19.2 RRS 60.3 (a) (1) is changed by deleting the word "serious".
- 19.3 Protests shall be delivered to the Regatta Office within 1.5 hours after the finish time of the last boat in her class (or in the last race of the day when multiple races are conducted) or if the race office is closed at night, by 0900 hours the next day.
- 19.4 Protests will be heard as soon as practicable after racing.
- 19.5 Notification of the details of protest hearings will be placed on the official notice board as soon as possible to inform competitors where and when there is a hearing in which they are parties to a protest or named as a witness. These notices are deemed to fulfil the requirements of RRS 63.2. Representatives of boats, who are parties to hearings, and their witnesses, are advised to remain on call in the vicinity of the Regatta Office (or such other place as directed by the Jury Secretary).
- 19.6 RRS 66 is changed by adding: "On the last day of racing, a party to the hearing may ask for a reopening no later than 20 minutes after being informed of the decision. If the party was informed of the decision on the previous day it shall ask for a reopening no later than the time limit for protests."
- 19.7 In accordance with RRS 64.1 the Jury may award a disqualification or a scoring penalty which may include no penalty.

20. Mediation

- 20.1 For protests involving an alleged breach of a rule of RRS Part 2, a short mediation hearing may be held prior to a protest hearing. This changes RRS Part 5, Section B.
- 20.2 After a written protest is lodged, one representative from each boat will meet with the mediator. No witnesses will be permitted at this hearing.
- 20.3 A boat that accepts fault at a mediation hearing will be penalised by having her race score increased by 25% of the difference between the boats finishing score and the score for DSQ in her division or class, rounded to the nearest whole number. All other boats scores will remain the same. Once accepted, this decision is not subject to reopening or appeal. This alters RRS 63, 64.1, 66 and Appendix "A".
- 20.4 The acceptance of a mediator's opinion cannot be grounds for redress or reopening. This changes RRS 60.1, 62 and 66.
- 20.5 The mediator may be a member of any subsequent Jury or may give evidence to the Jury.

21. Handicaps and Scoring

21.1 The scoring system shall be the Low Point System, RRS Appendix "A" except if there are five or less races sailed for a class or division then all races will count. One race will constitute a series in each Class. The number of scheduled races and handicap system in each Class is as follows:

Class	No. of Scheduled Races	Handicap System	Multiplier
IRC Racing	8	IRC	Time Corrector (TCC)
IRC Passage Division 1	6		
IRC Passage Division 2	6		
Racer/Cruiser	7	Performance Handicap	Time Correction Factor (TCF)
Cruising Divs 1,2,3, 4 & 5	6		
Non-Spinnaker Divs 1 & 2	6		
Multihull Cruising Divs 1 & 2	6		
Multihull Racing	7	Offshore Multihull Rule	OMR rating
Trailer Yacht	6	Performance Handicap based on CBH	Time Correction Factor (TCF)

21.2 Results will be calculated by the application of the appropriate Class multiplier of elapsed time as shown in the table above. The boat with the lowest corrected time (after application of scoring penalties, if any) will be scored first and so on.

21.3 Performance Based Handicap TCF's for each yacht will be determined by the H.I.Y.C. Handicap Committee and may be altered at any time. The decision of the Handicap Committee or their representative on any handicap matter will be final and will not be grounds for requests for redress. This alters RRS 60.1 (b).

22. Safety

22.1 **All Classes:** The safety regulations will be AS Special Regulations Part 1 for Category 5 races.

22.2 A boat may be inspected at any time for compliance with Special Regulations or Rating Certificate.

23. Radio Communication

23.1 The race committee may broadcast the course to be sailed, names/sail numbers of OCS boats, and/or other information of interest to competitors on the appropriate course VHF channel. Any such communications by the race committee will not be considered as Outside Help, this alters RRS 41. The race committee may also transmit course and other information by Short Message Service (SMS).

Any failure of, or defect in, any such a broadcast will not be grounds for redress. This alters RRS 60.1 and 62.

23.2 In accordance with SI 2 boats shall maintain a radio watch on the race frequency when in the vicinity of Dent Passage and comply with the directions given by the race committee, marshal or race committee vessels. Refer SI 2.

23.3 Club Marine Classic Long and Medium Distance Race

Mandatory position reporting radio schedules on VHF channel 81 will be conducted at 1803 hrs and 2103 hrs. Boats still racing will be called in alphabetical order at these times. During the Club Marine Classic Long Race, the leading boat in each class and the last boat in each class are requested to call the race committee (VHF Ch 81) as they round each major mark of the course. This instruction may only be protested by the race committee. This alters rules 60.1 and 60.3.

24. Race Results

Results for each race will be posted on the official notice board as soon as practicable after each race. Results will also be posted on the event website. Copies of result sheets may be available from the Regatta Office.

25. Prizes

25.1 Daily Prizes will be awarded for 1st, 2nd and 3rd on corrected time in each race for each Class except if there are multiple races held for a Division or Class the day's totalled race scores will determine the winners. Daily Prizes will be presented on the main stage opposite the Marina Tavern at approximately 1730 hrs after racing each day.

25.2 Overall Trophies will be awarded to 1st, 2nd and 3rd place in the overall pointscore in all other Classes.

25.3 In addition the following special awards will be made at the trophy presentation:

- Gun Boat Trophy for the boat which has the most Line Honours.
- The Leon O'Donoghue Trophy for "Boat of the Week".
- The Prix d'Elegance for the best-presented boat and crew.
- The Don McLean North Queensland Trophy for the best performing boat whose home port is between Bundaberg & Port Douglas.

(The race committee will determine the winners of these special awards using whatever criteria they deem appropriate).

25.4 Trophies will be presented at a ceremony on the evening of Saturday 26 August 2017 in the Conference Centre, Hamilton Island.

APPENDIX "A" COURSES AND MARK DESCRIPTIONS

Island Passage Courses

A 1 For Dent Passage Starts, the course will be broadcast on the course VHF channel as soon as practical after the warning signal for each Class. Courses will also be posted on the official notice board each day. This changes RRS 271.

For on-water starts the course to be sailed by each class will be signalled by a Numeral Board displayed from the race committee vessel. The course to be sailed may also be broadcast on the designated course VHF Channel.

A 2 The following course descriptions list the order in which marks are to be passed and the side each mark is be rounded. Please note; marks denoted * are passing marks.

A 3 The approximate position given is the pinnacle of the island or rock designated as a mark of the course. Laid marks will be red and white Audi cube inflatable buoys.

Club Marine Classic Long Race - IRC Racing Division 1 & Multihull Racing

50.0 nm approx

Course Mark	Mark Description	Required Side
Starting Line	Dent Passage in a northerly direction	
Dent Island	Approx S 20° 20.75', E 148° 55.85'	Port
White Rock	Approx S 20° 18.09', E 148° 48.61'	Starboard
Denman Island	Approx S 20° 16.93', E 148° 50.98'	Starboard
Dent Island	Approx S 20° 20.75', E 148° 55.85'	Port
Pentecost Island	Approx S 20° 23.81', E 149° 01.79'	Starboard
Baynham Island	Approx S 20° 26.17', E 149° 06.16'	Port
Isolated Rock	Approx S 20° 24.35', E 149° 00.39'	Port
Ann Island	Approx S 20° 25.22', E 149° 00.95'	Starboard
Sidney Island	Approx S 20° 26.92', E 149° 00.56'	Starboard
Dent Island*	Approx S 20° 20.75', E 148° 55.85'	Port
Finishing Line	Dent Passage in a northerly direction	

Club Marine Classic Medium Distance Race - Racer/Cruiser, IRC Passage Divisions 1 & 2

34.4 nm approx

Course Mark	Mark Description	Required Side
Starting Line	Dent Passage in a northerly direction	
Dent Island	Approx S 20° 20.75', E 148° 55.85'	Port
Denman Island	Approx S 20° 16.93', E 148° 50.98'	Starboard
Dent Island	Approx S 20° 20.75', E 148° 55.85'	Port
Pentecost Island	Approx S 20° 23.81', E 149° 01.79'	Starboard
Isolated Rock	Approx S 20° 24.35', E 149° 00.39'	Port
Ann Island	Approx S 20° 25.22', E 149° 00.95'	Starboard
Sidney Island	Approx S 20° 26.92', E 149° 00.56'	Starboard
Dent Island*	Approx S 20° 20.75', E 148° 55.85'	Port
Finishing Line	Dent Passage in a northerly direction	

All other races use the following General Courses

Course 1

24.1 nm approx

Course Mark	Mark Description	Required Side
Starting Line	Dent Passage in a northerly direction	
South Molle Island	Approx S 20° 16.47', E 148° 50.24'	Starboard
Daydream Island	Approx S 20° 15.44', E 148° 48.86'	Starboard
North Molle Island	Approx S 20° 13.62', E 148° 49.29'	Starboard
Dent Laid Mark	Approx S 20° 20.36', E 148° 56.51'	Starboard
Finishing Line	Dent Passage in a southerly direction	

Course 2

19.2 nm approx

Course Mark	Mark Description	Required Side
Starting Line	Dent Passage in a northerly direction	
South Molle Island	Approx S 20° 16.47', E 148° 50.24'	Starboard
Mid Molle Island	Approx S 20° 14.80', E 148° 49.86'	Starboard
Dent Laid Mark	Approx S 20° 20.36', E 148° 56.51'	Starboard
Finishing Line	Dent Passage in a southerly direction	

Course 3

15.3 nm approx

Course Mark	Mark Description	Required Side
Starting Line	Dent Passage in a northerly direction	
Denman Island	Approx S 20° 16.93', E 148° 50.98'	Starboard
Dent Island	Approx S 20° 20.75', E 148° 55.85'	Starboard
Dent Laid Mark	Approx S 20° 20.36', E 148° 56.51'	Starboard
Finishing Line	Dent Passage in a southerly direction	

Course 4

15.5 nm approx

Course Mark	Mark Description	Required Side
Starting Line	Dent Passage in a northerly direction	
White Rock	Approx S 20° 18.09', E 148° 48.61'	Starboard
Dent Laid Mark	Approx S 20° 20.36', E 148° 56.51'	Starboard
Finishing Line	Dent Passage in a southerly direction	

Course 5

23.2 nm approx

Course Mark	Mark Description	Required Side
Starting Line	Dent Passage in a northerly direction	
Henning Island	Approx S 20° 19.18', E 148° 55.69'	Starboard
Condor Laid Mark	Approx S 20° 14.48', E 148° 54.60'	Port
Denman Island	Approx S 20° 16.93', E 148° 50.98'	Starboard
White Rock	Approx S 20° 18.09', E 148° 48.61'	Starboard
Denman Island	Approx S 20° 16.93', E 148° 50.98'	Starboard
Dent Laid Mark	Approx S 20° 20.36', E 148° 56.51'	Starboard
Finishing Line	Dent Passage in a southerly direction	

Course 6

32.5 nm approx

Course Mark	Mark Description	Required Side
Starting Line	Dent Passage in a northerly direction	
Henning Island	Approx S 20° 19.18', E 148° 55.69'	Starboard
Condor Laid Mark	Approx S 20° 14.48', E 148° 54.60'	Port
Denman Island	Approx S 20° 16.93', E 148° 50.98'	Starboard
Condor Laid Mark	Approx S 20° 14.48', E 148° 54.60'	Port
Denman Island	Approx S 20° 16.93', E 148° 50.98'	Starboard
White Rock	Approx S 20° 18.09', E 148° 48.61'	Starboard
Denman Island	Approx S 20° 16.93', E 148° 50.98'	Starboard
Dent Laid Mark	Approx S 20° 20.36', E 148° 56.51'	Starboard
Finishing Line	Dent Passage in a southerly direction	

Course 7

30.8 nm approx

Course Mark	Mark Description	Required Side
Starting Line	Dent Passage in a northerly direction	
White Rock	Approx S 20° 18.09', E 148° 48.61'	Starboard
Condor Laid Mark	Approx S 20° 14.48', E 148° 54.60'	Port
Denman Island	Approx S 20° 16.93', E 148° 50.98'	Starboard
White Rock	Approx S 20° 18.09', E 148° 48.61'	Starboard
Denman Island	Approx S 20° 16.93', E 148° 50.98'	Starboard
Dent Laid Mark	Approx S 20° 20.36', E 148° 56.51'	Starboard
Finishing Line	Dent Passage in a southerly direction	

Course 8

26.8 nm approx

Course Mark	Mark Description	Required Side
Starting Line	Dent Passage in a northerly direction	
Denman Island	Approx S 20° 16.93', E 148° 50.98'	Starboard
Condor Laid Mark	Approx S 20° 14.48', E 148° 54.60'	Port
Denman Island	Approx S 20° 16.93', E 148° 50.98'	Starboard
White Rock	Approx S 20° 18.09', E 148° 48.61'	Starboard
Denman Island	Approx S 20° 16.93', E 148° 50.98'	Starboard
Dent Laid Mark	Approx S 20° 20.36', E 148° 56.51'	Starboard
Finishing Line	Dent Passage in a southerly direction	

Course 9

23.2 nm approx

Course Mark	Mark Description	Required Side
Starting Line	Dent Passage in a northerly direction	
White Rock	Approx S 20° 18.09', E 148° 48.61'	Starboard
Denman Island	Approx S 20° 16.93', E 148° 50.98'	Starboard
White Rock	Approx S 20° 18.09', E 148° 48.61'	Starboard
Denman Island	Approx S 20° 16.93', E 148° 50.98'	Starboard
Dent Laid Mark	Approx S 20° 20.36', E 148° 56.51'	Starboard
Finishing Line	Dent Passage in a southerly direction	

Course 10

32.6 nm approx

Course Mark	Mark Description	Required Side
Starting Line	Eastern Starting Line	
Dent Island	Approx S 20° 20.75', E 148° 55.85'	Starboard
Condor Laid Mark	Approx S 20° 14.48', E 148° 54.60'	Port
Denman Island	Approx S 20° 16.93', E 148° 50.98'	Starboard
White Rock	Approx S 20° 18.09', E 148° 48.61'	Starboard
Denman Island	Approx S 20° 16.93', E 148° 50.98'	Starboard
Dent Laid Mark	Approx S 20° 20.36', E 148° 56.51'	Starboard
Finishing Line	Dent Passage in a southerly direction	

Course 11

37.2 nm approx

Course Mark	Mark Description	Required Side
Starting Line	Eastern Starting Line	
Pentecost Island	Approx S 20° 23.81', E 149° 01.79'	Starboard
Dent Island	Approx S 20° 20.75', E 148° 55.85'	Starboard
Condor Laid Mark	Approx S 20° 14.48', E 148° 54.60'	Port
Denman Island	Approx S 20° 16.93', E 148° 50.98'	Starboard
White Rock	Approx S 20° 18.09', E 148° 48.61'	Starboard
Denman Island	Approx S 20° 16.93', E 148° 50.98'	Starboard
Dent Laid Mark	Approx S 20° 20.36', E 148° 56.51'	Starboard
Finishing Line	Dent Passage in a southerly direction	

Course 12

25.2 nm approx

Course Mark	Mark Description	Required Side
Starting Line	Eastern Starting Line	
Isolated Rock	Approx S 20° 24.35', E 149° 00.39'	Port
Ann Island	Approx S 20° 25.22', E 149° 00.95'	Starboard
Sidney Island	Approx S 20° 26.92', E 149° 00.56'	Starboard
Pine Island	Approx S 20° 22.63', E 148° 53.41'	Starboard
Dent Island	Approx S 20° 20.75', E 148° 55.85'	Port
Finishing Line	Dent Passage in a northerly direction	

Course 13

13.0 nm approx

Course Mark	Mark Description	Required Side
Starting Line	Eastern Starting Line	
Pentecost Island	Approx S 20° 23.81', E 149° 01.79'	Starboard
Dent Island*	Approx S 20° 20.75', E 148° 55.85'	Port
Finishing Line	Dent Passage in a northerly direction	

Course 14

16.3 nm approx

Course Mark	Mark Description	Required Side
Starting Line	Eastern Starting Line	
Isolated Rock	Approx S 20° 24.35', E 149° 00.39'	Port
Ann Island	Approx S 20° 25.22', E 149° 00.95'	Starboard
Cole Island	Approx S 20° 25.51', E 149° 00.45'	Starboard
Dent Island*	Approx S 20° 20.75', E 148° 55.85'	Port
Finishing Line	Dent Passage in a northerly direction	

Course 15

19.4 nm approx

Course Mark	Mark Description	Required Side
Starting Line	Eastern Starting Line	
Isolated Rock	Approx S 20° 24.35', E 149° 00.39'	Port
Ann Island	Approx S 20° 25.22', E 149° 00.95'	Starboard
Spitfire Laid mark	Approx S 20° 28.70', E 149° 01.60'	Port
Dent Island	Approx S 20° 20.75', E 148° 55.85'	Port
Finishing Line	Dent Passage in a northerly direction	

Course 16

24.2 nm approx

Course Mark	Mark Description	Required Side
Starting Line	Eastern Starting Line	
Baynham Island	Approx S 20° 26.17', E 149° 06.16'	Port
Lindeman Island	Approx S 20° 26.74', E 149° 02.78'	Starboard
Sidney Island	Approx S 20° 26.92', E 149° 00.56'	Port
Dent Island*	Approx S 20° 20.75', E 148° 55.85'	Port
Finishing Line	Dent Passage in a northerly direction	

Course 17

10.4 nm approx

Course Mark	Mark Description	Required Side
Starting Line	Dent Passage in a northerly direction	
Hamilton Island	Approx S 20° 21.19', E 148° 58.43'	Starboard
Dungarra Island	Approx S 20° 21.53', E 148° 59.81'	Starboard
Dent Island*	Approx S 20° 20.75', E 148° 55.85'	Port
Finishing Line	Dent Passage in a northerly direction	

Course 18

22.4 nm approx

Course Mark	Mark Description	Required Side
Starting Line	Eastern Starting Line	
Baynham Island	Approx S 20° 26.17', E 149° 06.16'	Port
Dent Island*	Approx S 20° 20.75', E 148° 55.85'	Port
Finishing Line	Dent Passage in a northerly direction	

Course 19

26.5 nm approx

Course Mark	Mark Description	Required Side
Starting Line	Eastern Starting Line	
Cole Island	Approx S 20° 25.51', E 149° 00.45'	Port
Lindeman Island	Approx S 20° 26.74', E 149° 02.78'	Starboard
Baynham Island	Approx S 20° 26.17', E 149° 06.16'	Port
Dent Island*	Approx S 20° 20.75', E 148° 55.85'	Port
Finishing Line	Dent Passage in a northerly direction	

Course 20

30.4 nm approx

Course Mark	Mark Description	Required Side
Starting Line	Eastern Starting Line	
Pentecost Island	Approx S 20° 23.81', E 149° 01.79'	Starboard
Dent Island	Approx S 20° 20.75', E 148° 55.85'	Starboard
Denman Island	Approx S 20° 16.93', E 148° 50.98'	Starboard
Dent Island	Approx S 20° 20.75', E 148° 55.85'	Port
Finishing Line	Dent Passage in a northerly direction	

Course 21

28.1 nm approx

Course Mark	Mark Description	Required Side
Starting Line	Dent Passage in a northerly direction	
Henning Island*	Approx S 20° 19.18', E 148° 55.69'	Starboard
Denman Island	Approx S 20° 16.93', E 148° 50.98'	Starboard
Yellow Special Mark	Approx S 20° 17.83', E 148° 55.00'	Starboard
Yellow Special Mark	Approx S 20° 18.80', E 148° 56.05'	Starboard
Dungarra Island	Approx S 20° 21.53', E 148° 59.81'	Starboard
Pentecost Island	Approx S 20° 23.81', E 149° 01.79'	Starboard
Dent Island*	Approx S 20° 20.75', E 148° 55.85'	Port
Finishing Line	Dent Passage in a northerly direction	

Course 22

21.2 nm approx

Course Mark	Mark Description	Required Side
Starting Line	Dent Passage in a northerly direction	
Henning Island	Approx S 20° 19.18', E 148° 55.69'	Starboard
Yellow Special Mark	Approx S 20° 17.83', E 148° 55.00'	Starboard
Yellow Special Mark	Approx S 20° 18.80', E 148° 56.05'	Starboard
Dungarra Island	Approx S 20° 21.53', E 148° 59.81'	Starboard
Pentecost Island	Approx S 20° 23.81', E 149° 01.79'	Starboard
Dent Island*	Approx S 20° 20.75', E 148° 55.85'	Port
Finishing Line	Dent Passage in a northerly direction	

Course 23

15.4 nm approx

Course Mark	Mark Description	Required Side
Starting Line	Dent Passage in a northerly direction	
Henning Island	Approx S 20° 19.18', E 148° 55.69'	Starboard
Yellow Special Mark	Approx S 20° 17.83', E 148° 55.00'	Starboard
Yellow Special Mark	Approx S 20° 18.80', E 148° 56.05'	Starboard
Dungarra Island	Approx S 20° 21.53', E 148° 59.81'	Starboard
Dent Island*	Approx S 20° 20.75', E 148° 55.85'	Port
Finishing Line	Dent Passage in a northerly direction	

Course 24

17.9 nm approx

Course Mark	Mark Description	Required Side
Starting Line	Dent Passage in a northerly direction	
Henning Island	Approx S 20° 19.18', E 148° 55.69'	Starboard
Yellow Special Mark	Approx S 20° 18.77', E 148° 56.05'	Starboard
Isolated Rock	Approx S 20° 24.35', E 149° 00.39'	Starboard
Dent Island*	Approx S 20° 20.75', E 148° 55.85'	Port
Finishing Line	Dent Passage in a northerly direction	

Course 25

28.1 nm approx

Course Mark	Mark Description	Required Side
Starting Line	Eastern Starting Line	
Dungarra Island	Approx S 20° 21.53', E 148° 59.81'	Starboard
Dent Island	Approx S 20° 20.75', E 148° 55.85'	Starboard
Yellow Special Mark	Approx S 20° 17.83', E 148° 55.00'	Starboard
Yellow Special Mark	Approx S 20° 18.80', E 148° 56.05'	Starboard
Dungarra Island	Approx S 20° 21.53', E 148° 59.81'	Starboard
Isolated Rock	Approx S 20° 24.35', E 149° 00.39'	Starboard
Dent Island*	Approx S 20° 20.75', E 148° 55.85'	Port
Finishing Line	Dent Passage in a northerly direction	

Course 26

30.2 nm approx

Course Mark	Mark Description	Required Side
Starting Line	Eastern Starting Line	
Dungarra Island	Approx S 20° 21.53', E 148° 59.81'	Starboard
Dent Island	Approx S 20° 20.75', E 148° 55.85'	Starboard
Yellow Special Mark	Approx S 20° 17.83', E 148° 55.00'	Starboard
Yellow Special Mark	Approx S 20° 18.80', E 148° 56.05'	Starboard
Dungarra Island	Approx S 20° 21.53', E 148° 59.81'	Starboard
Ann Island	Approx S 20° 25.22', E 149° 00.95'	Starboard
Cole Island	Approx S 20° 25.51', E 149° 00.45'	Starboard
Dent Island*	Approx S 20° 20.75', E 148° 55.85'	Port
Finishing Line	Dent Passage in a northerly direction	

Course 27

13.6 nm approx

Course Mark	Mark Description	Required Side
Starting Line	Dent Passage in a northerly direction	
Yellow Special Mark	Approx S 20° 17.83', E 148° 55.00'	Starboard
Yellow Special Mark	Approx S 20° 18.80', E 148° 56.05'	Starboard
Dent Laid Mark	Approx S 20° 20.36', E 148° 56.51'	Starboard
Yellow Special Mark	Approx S 20° 17.83', E 148° 55.00'	Starboard
Yellow Special Mark	Approx S 20° 18.80', E 148° 56.05'	Starboard
Dent Laid Mark*	Approx S 20° 20.36', E 148° 56.51'	Starboard
Finishing Line	Dent Passage in a southerly direction	

Course 28

32.3 nm approx

Course Mark	Mark Description	Required Side
Starting Line	Eastern Starting Line	
Ann Island	Approx S 20° 25.22', E 149° 00.95'	Starboard
Sidney Island	Approx S 20° 26.92', E 149° 00.56'	Starboard
White Rock	Approx S 20° 18.09', E 148° 48.61'	Starboard
Denman Island	Approx S 20° 16.93', E 148° 50.98'	Starboard
Dent Laid Mark	Approx S 20° 20.36', E 148° 56.51'	Starboard
Finishing Line	Dent Passage in a southerly direction	

Course 29

30.3 nm approx

Course Mark	Mark Description	Required Side
Starting Line	Eastern Starting Line	
Pentecost Island	Approx S 20° 23.81', E 149° 01.79'	Starboard
White Rock	Approx S 20° 18.09', E 148° 48.61'	Starboard
Denman Island	Approx S 20° 16.93', E 148° 50.98'	Starboard
Dent Laid Mark	Approx S 20° 20.36', E 148° 56.51'	Starboard
Finishing Line	Dent Passage in a southerly direction	

Course 30

21.4 nm approx

Course Mark	Mark Description	Required Side
Starting Line	Eastern Start Line	
Lindeman Island	Approx S 20° 26.74', E 149° 02.78'	Starboard
Spitfire Laid Mark	Approx S 20° 28.70', E 149° 01.60'	Starboard
Dent Island*	Approx S 20° 20.75', E 148° 55.85'	Port
Finishing Line	Dent Passage in a northerly direction	

Course 31

26.7 nm approx

Course Mark	Mark Description	Required Side
Starting Line	Dent Passage in a northerly direction	
Dent Island	Approx S 20° 20.75', E 148° 55.85'	Port
Lindeman Island	Approx S 20° 26.74', E 149° 02.78'	Starboard
Spitfire Laid Mark	Approx S 20° 28.70', E 149° 01.60'	Starboard
Dent Island*	Approx S 20° 20.75', E 148° 55.85'	Port
Finishing Line	Dent Passage in a northerly direction	

Course 32

18.5 nm approx

Course Mark	Mark Description	Required Side
Starting Line	Dent Passage in a Northerly direction	
Dent Island	Approx S 20° 20.75', E 148° 55.85'	Port
Perseverance Island	Approx S 20° 26.92', E 149° 00.56'	Starboard
Dungarra Island	Approx S 20° 21.53', E 148° 59.81'	Starboard
Isolated Rock	Approx S 20° 24.35', E 149° 00.39'	Starboard
Dent Island *	Approx S 20° 20.75', E 148° 55.85'	Port
Finishing Line	Dent Passage in a northerly direction	

Course 33

21.2 nm approx

Course Mark	Mark Description	Required Side
Starting Line	Dent Passage in a northerly direction	
Dent Island	Approx S 20° 20.75', E 148° 55.85'	Port
Penetecost Island	Approx S 20° 23.81', E 149° 01.79'	Port
Perseverance Island	Approx S 20° 26.92', E 149° 00.56'	Starboard
Dungarra Island	Approx S 20° 21.53', E 148° 59.81'	Starboard
Dent Island *	Approx S 20° 20.75', E 148° 55.85'	Port
Finishing Line	Dent Passage in a northerly direction	

Course 34

23.3 nm approx

Course Mark	Mark Description	Required Side
Starting Line	Dent Passage in a northerly direction	
Dent Island	Approx S 20° 20.75', E 148° 55.85'	Port
Perseverance Island	Approx S 20° 26.92', E 149° 00.56'	Starboard
Dungarra Island	Approx S 20° 21.53', E 148° 59.81'	Starboard
Sidney Island	Approx S 20° 25.22', E 149° 00.95'	Starboard
Dent Island*	Approx S 20° 20.75', E 148° 55.85'	Port
Finishing Line	Dent Passage in a northerly direction	

Course 35

27.7 nm approx

Course Mark	Mark Description	Required Side
Starting Line	Dent Passage in a northerly direction	
Dent Island	Approx S 20° 20.75', E 148° 55.85'	Port
Penetecost Island	Approx S 20° 23.81', E 149° 01.79'	Port
Perseverance Island	Approx S 20° 26.92', E 149° 00.56'	Starboard
Dungarra Island	Approx S 20° 21.53', E 148° 59.81'	Starboard
Ann Island	Approx S 20° 25.22', E 149° 00.95'	Starboard
Cole Island	Approx S 20° 25.51', E 149° 00.45'	Starboard
Dent Island*	Approx S 20° 20.75', E 148° 55.85'	Port
Finishing Line	Dent Passage in a northerly direction	

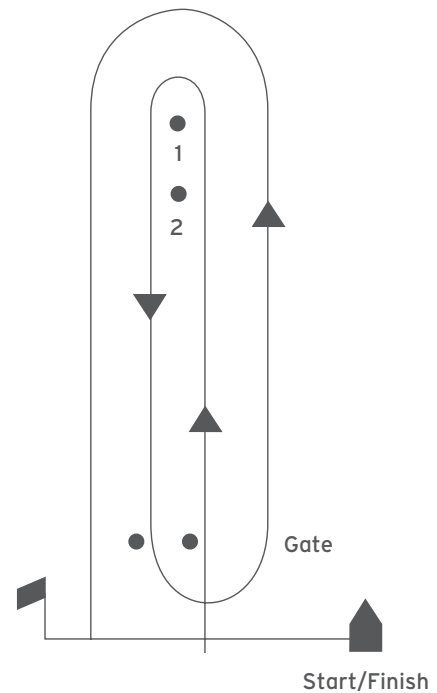
Course 36

30.5 nm approx

Course Mark	Mark Description	Required Side
Starting Line	Dent Passage in a northerly direction	
Dent Island	Approx S 20° 20.75', E 148° 55.85'	Port
Penetecost Island	Approx S 20° 23.81', E 149° 01.79'	Port
Perseverance Island	Approx S 20° 26.92', E 149° 00.56'	Starboard
Dungarra Island	Approx S 20° 21.53', E 148° 59.81'	Starboard
Sidney Island	Approx S 20° 25.22', E 149° 00.95'	Starboard
Dent Island*	Approx S 20° 20.75', E 148° 55.85'	Port
Finishing Line	Dent Passage in a northerly direction	

Windward / Leeward Courses

- A 4 The following course descriptions lists the order in which marks are to be passed and the side each mark is to be rounded.
- A 5 The course to be sailed for each class will be signalled by a Numeral Board displayed from the committee vessel. The course to be sailed may also be broadcast on the designated course VHF Channel.
- A 6 A board displaying the approximate compass bearing from the committee vessel to Mark 1 and to Mark 2 will be displayed from the committee vessel.
- A 7 Mark 1 and Mark 2 will be laid to windward of the starting line.
The Gate will be laid approximately 50 metres to windward of the starting line. (Note: The Gate may be laid after the starting signal).
- A 8 All Marks to PORT except the Gate. Either Gate marks may be rounded to port or to starboard after passing through the gate from the direction of the last mark. If only one Gate mark is set, yachts shall round that mark to port.
- A 9 For a change of course direction or length of one leg the race committee will move the original mark (or marks or finishing line) or will lay a new mark (or marks) identical to the original at the new position. Any subsequent marks may be relocated to maintain the original course configuration.
- A 10 Mark 2 will not be laid if not required.

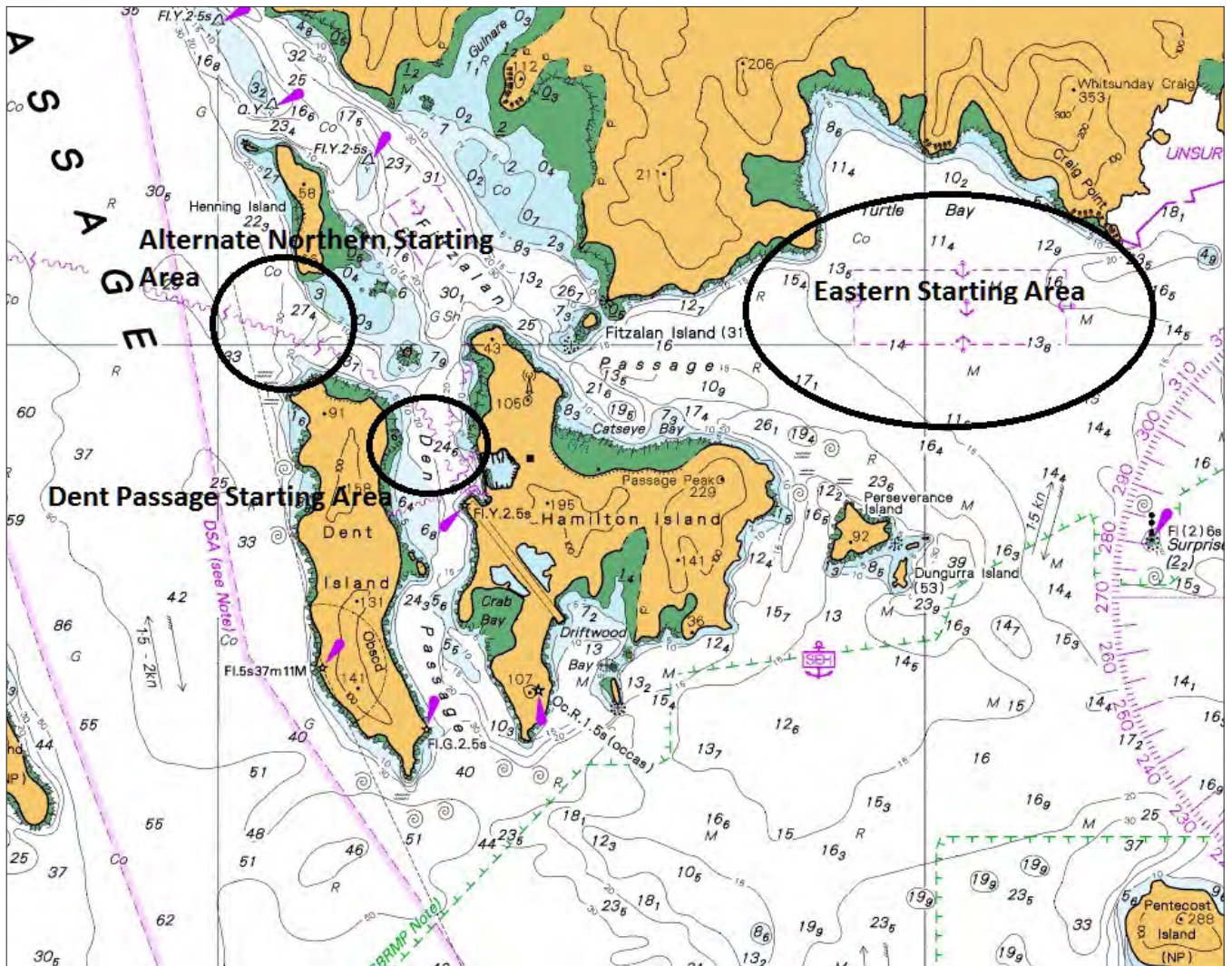


Course Mark	Mark Description
Start / Finish Mark	Yellow cylindrical inflatable buoy
Mark 1	Red and white Audi cube shaped inflatable buoy
Mark 2	Yellow cylindrical inflatable buoy
Gate	Red and white Audi cube shaped inflatable buoys

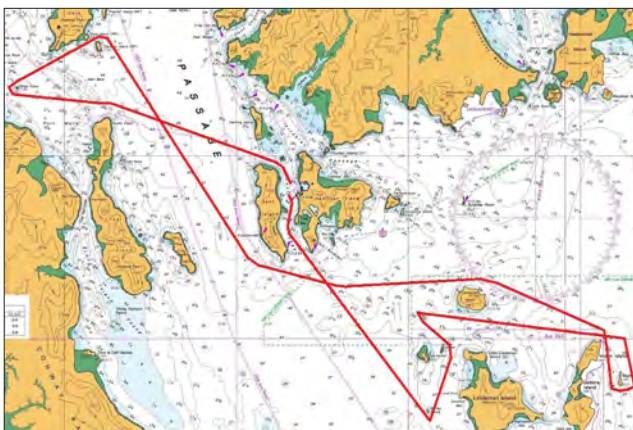
Course Mark	Mark Description
W1	Start - 1 - Finish
W2	Start - 1 - Gate - 1 - Finish
W3	Start - 1 - Gate - 1 - Gate - 1 - Finish
W4	Start - 2 - Finish
W5	Start - 2 - Gate - 2 - Finish
W6	Start - 2 - Gate - 2 - Gate - 2 - Finish

Course Maps

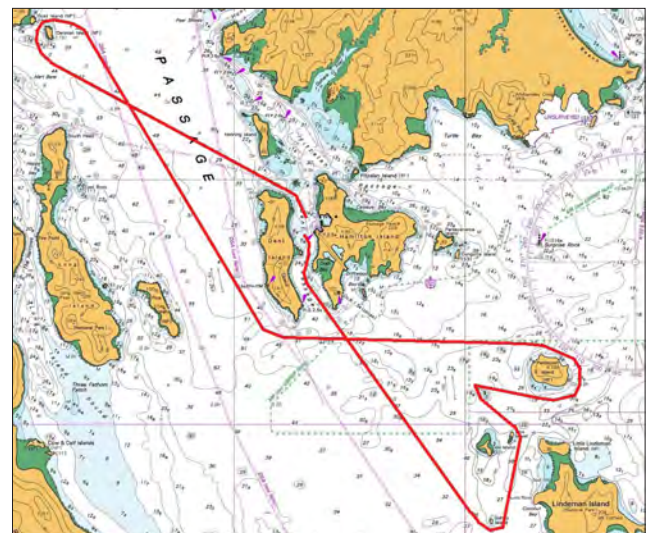
Starting Areas



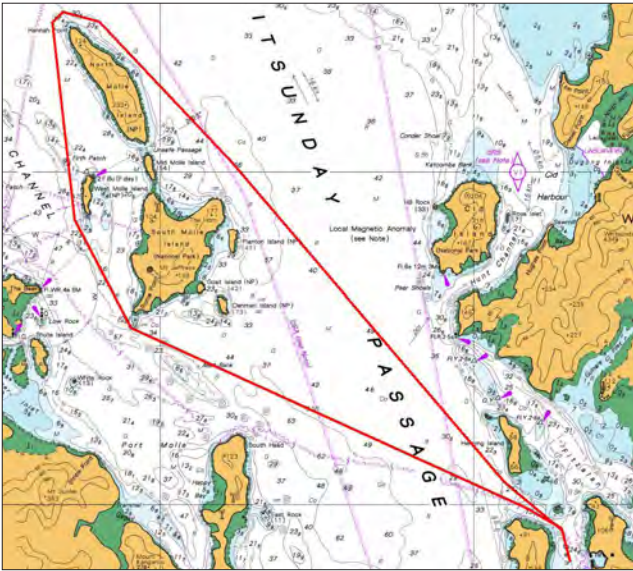
Club Marine Classic Long Race



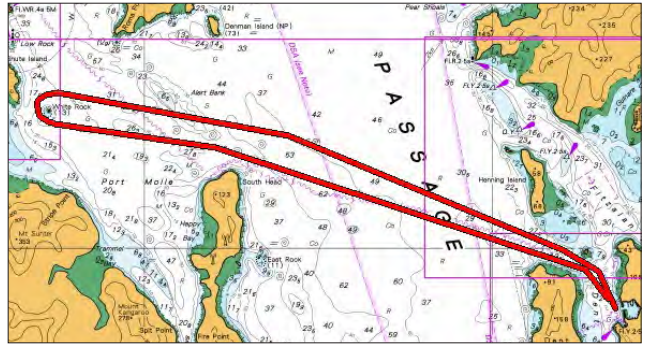
Club Marine Classic Medium Distance Race



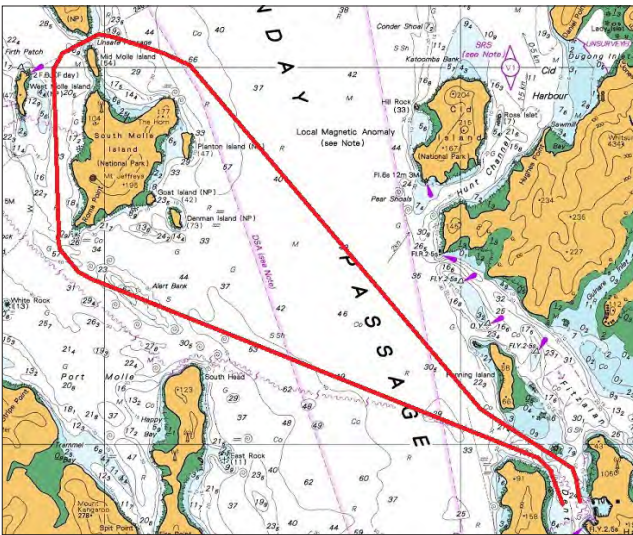
Course 1



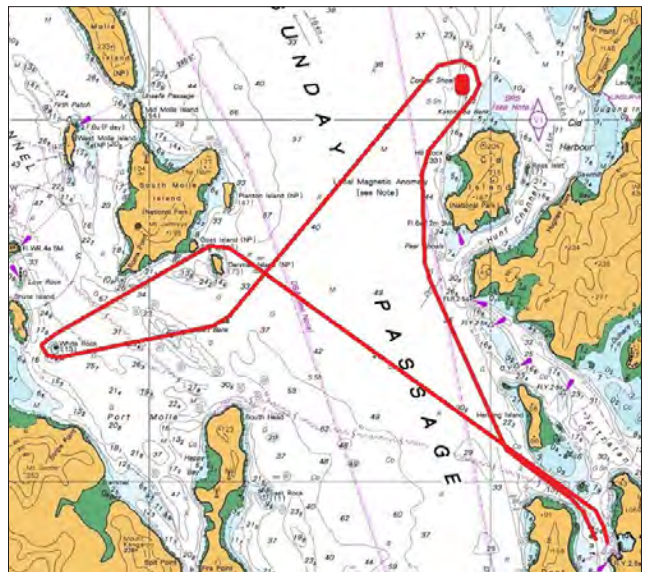
Course 4



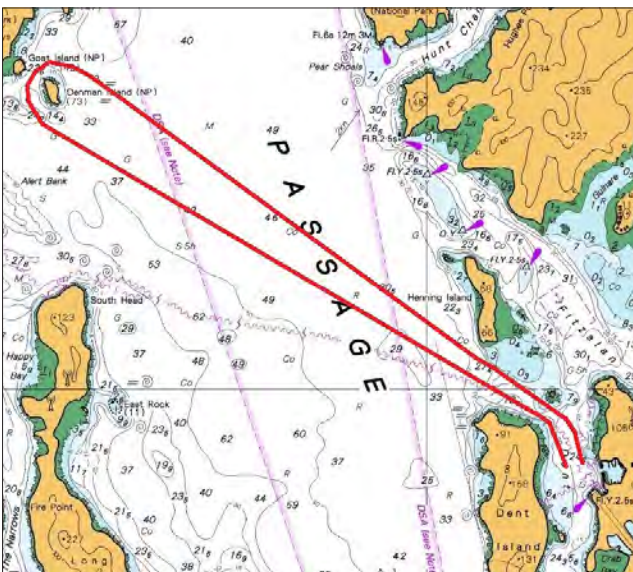
Course 2



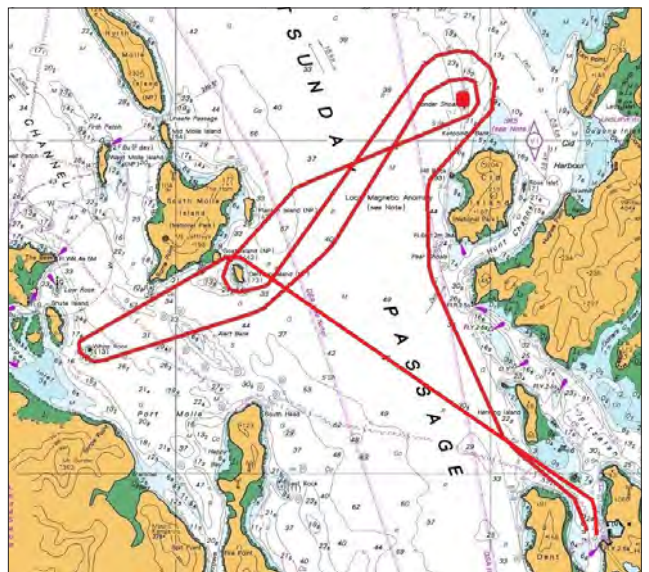
Course 5



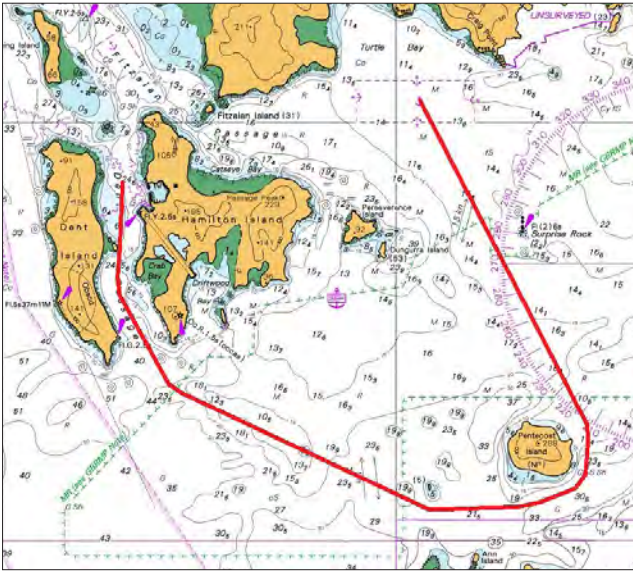
Course 3



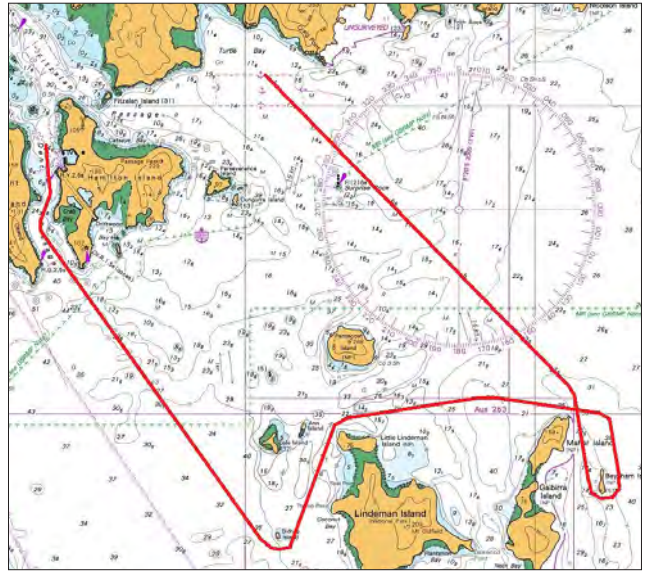
Course 6



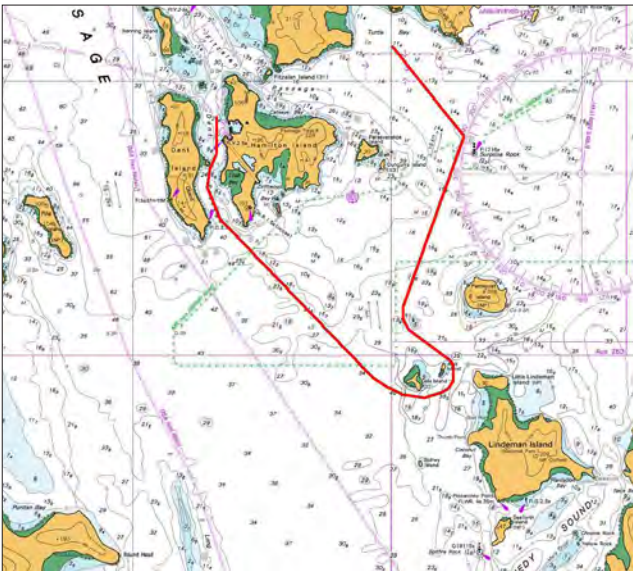
Course 13



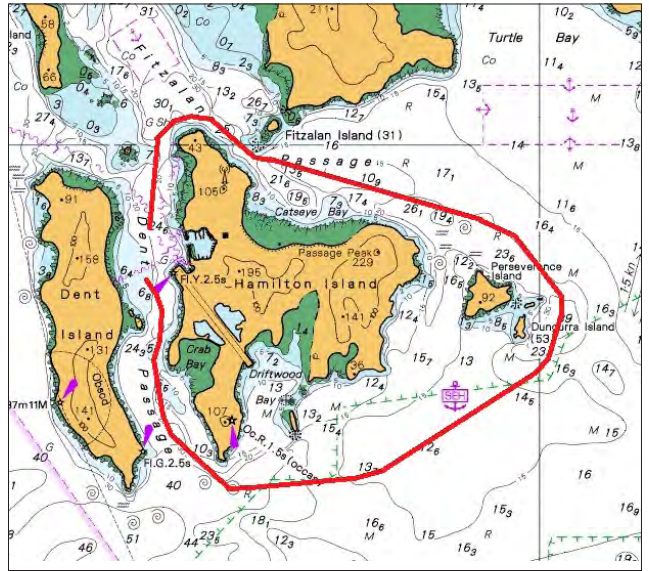
Course 16



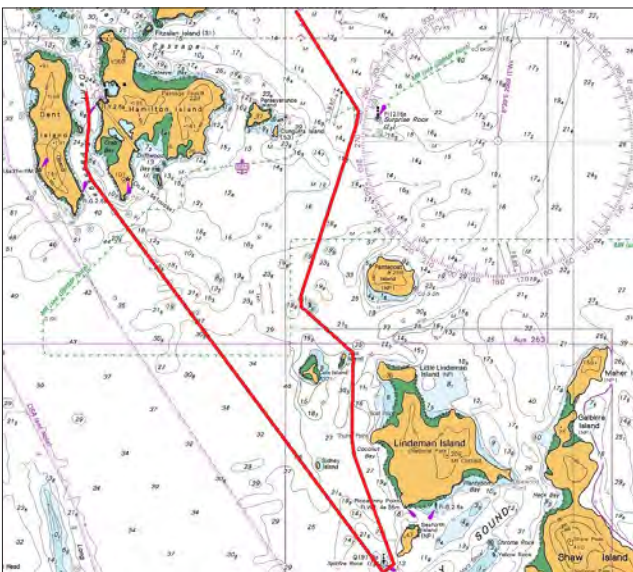
Course 14



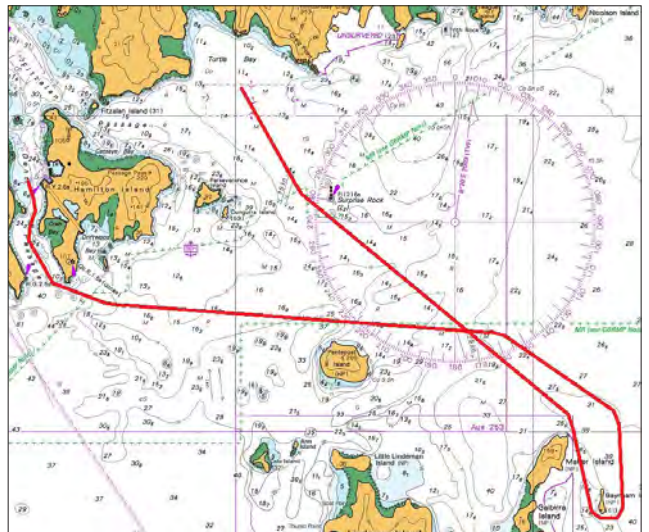
Course 17



Course 15



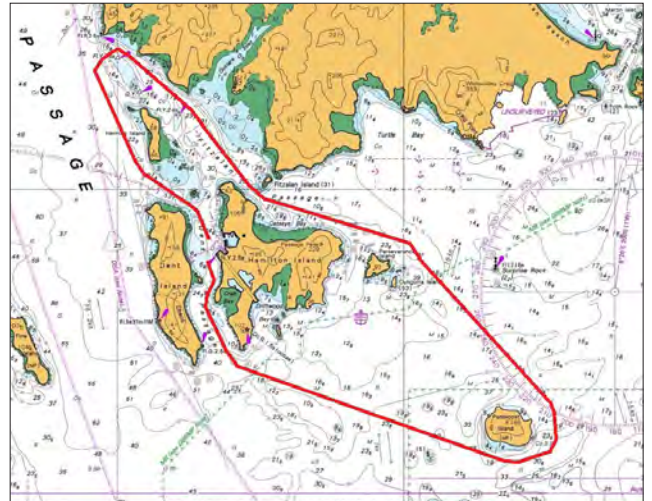
Course 18



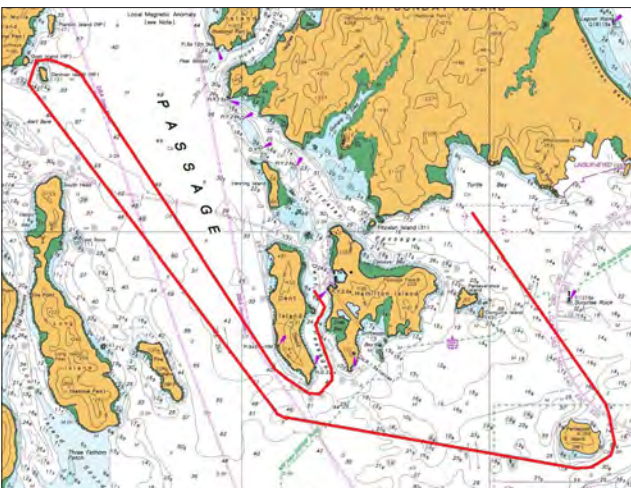
Course 19



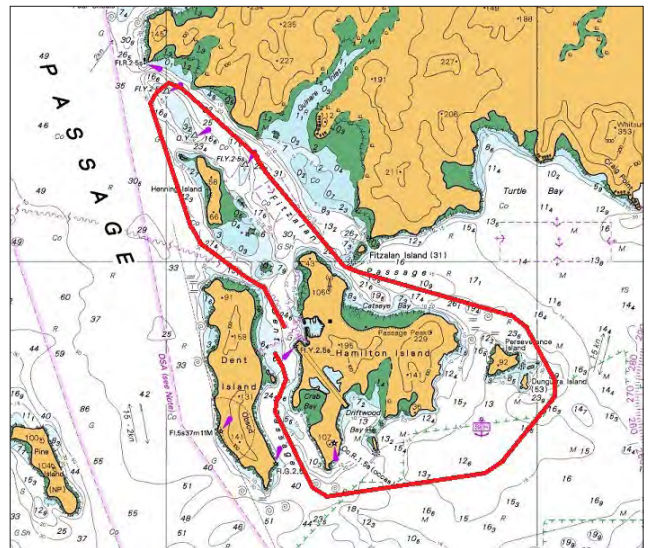
Course 22



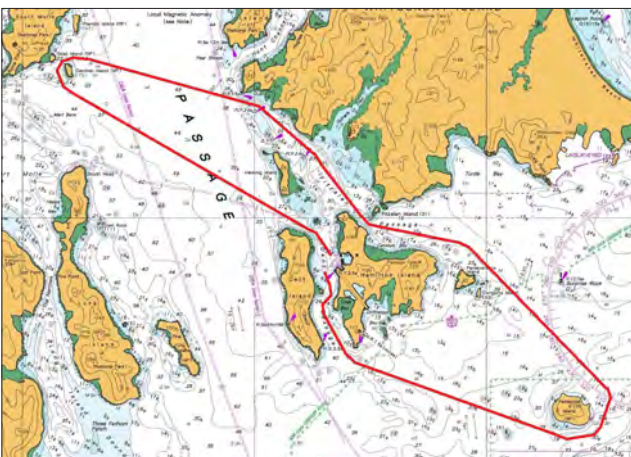
Course 20



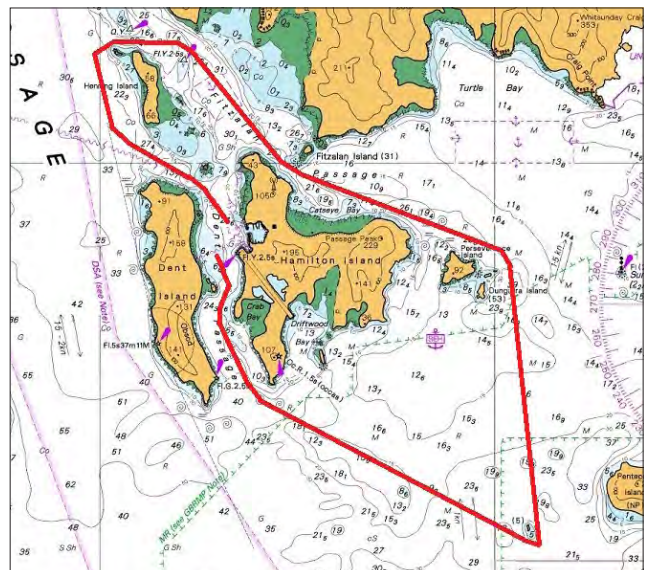
Course 23



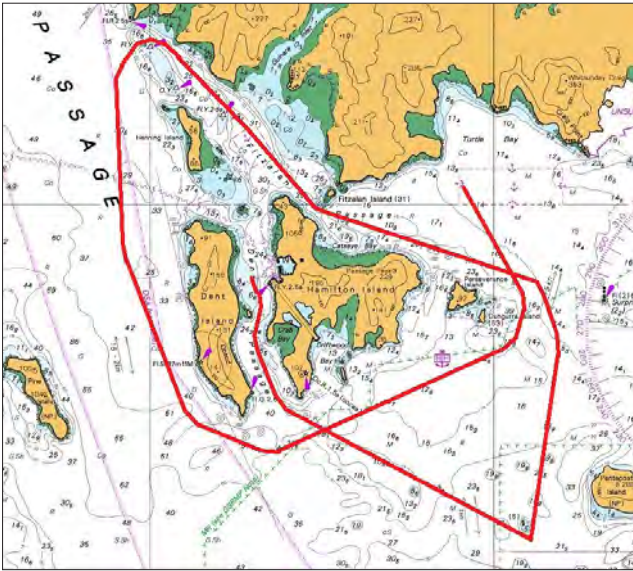
Course 21



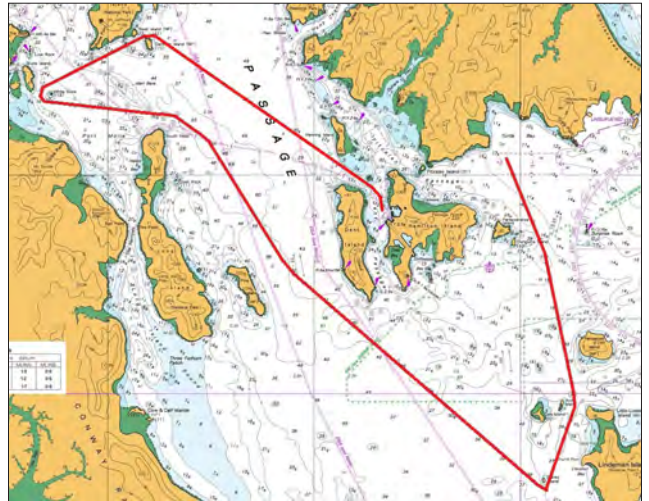
Course 24



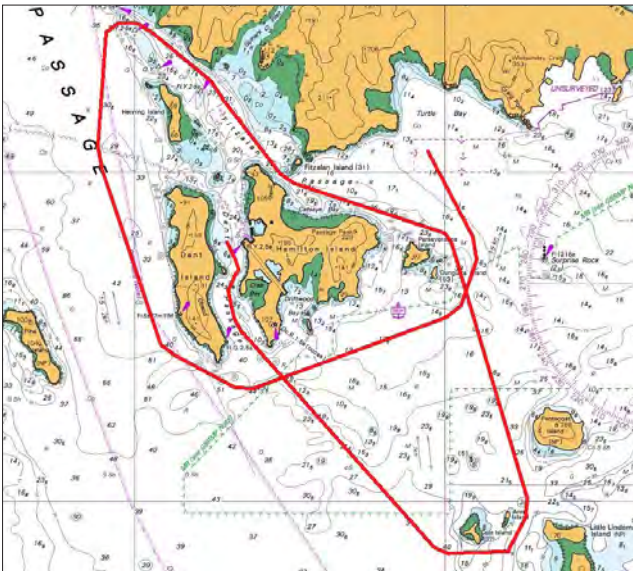
Course 25



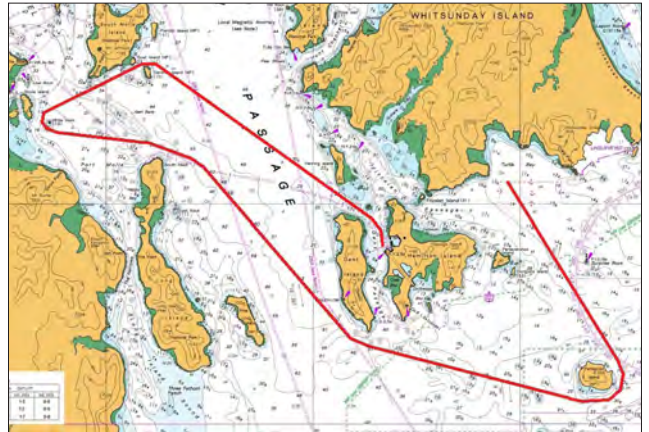
Course 28



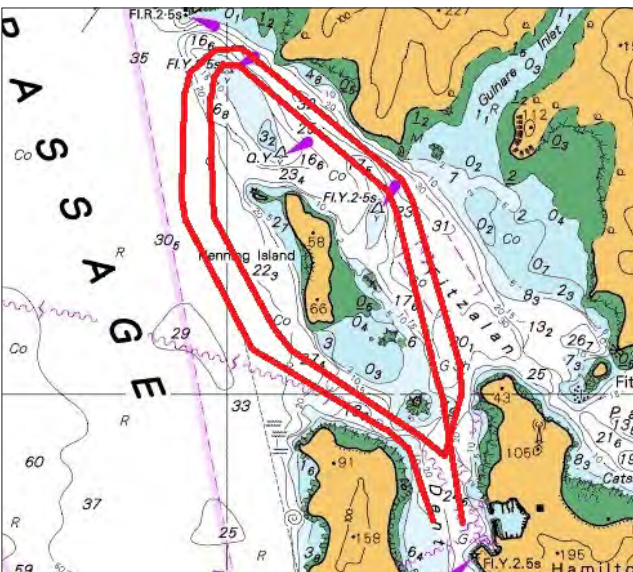
Course 26



Course 29



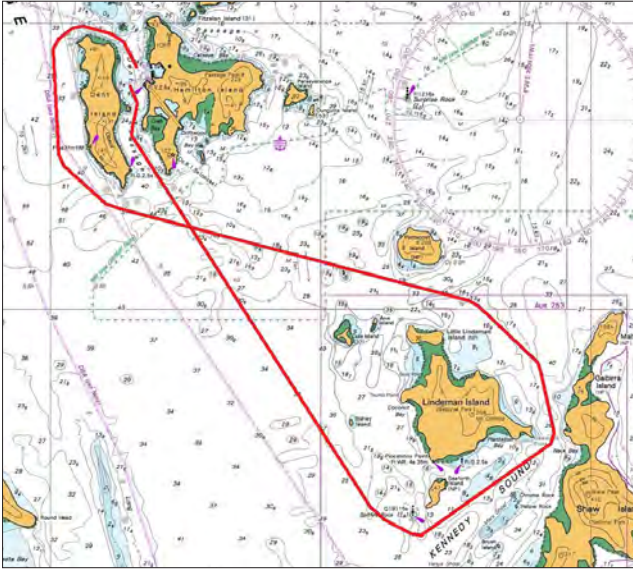
Course 27



Course 30



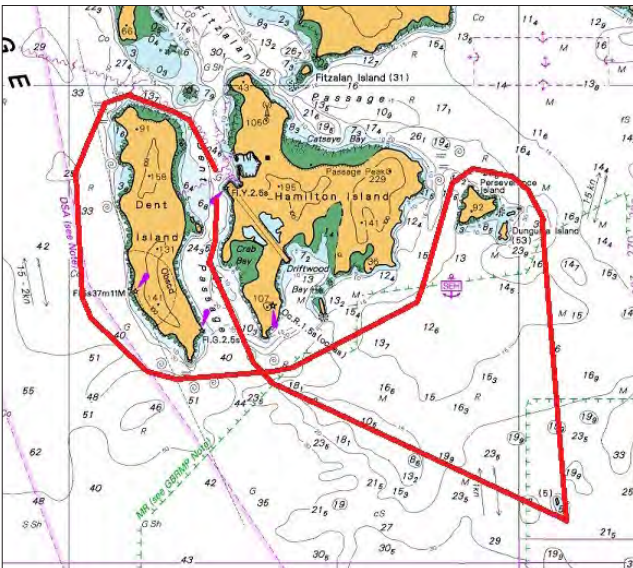
Course 31



Course 34



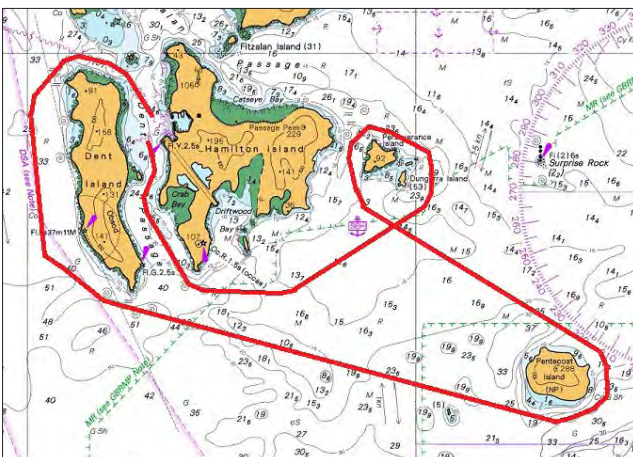
Course 32



Course 35



Course 33



Course 36

