



HAMILTON ISLAND RACE WEEK 2025

PRESENTED BY



SAILING INSTRUCTIONS

17 - 23 AUGUST



DIGITAL
EVENT
GUIDE



#HIRW #HAMILTONISLAND





CONTENTS

1. Rules	4
2. Aircraft Movements	4
3. Responsibility	5
4. Regatta Office and Notice Board	5
5. Pennants, Boom Stickers, Hull Decals and Identification Numbers	5
6. Signals Made Ashore	5
7. Notices to Competitors	5
8. Daily Reporting	5
9. Divisions and Class Flags	6
10. Courses and Marks of the Course	6
11. Race Committee Vessels	6
12. Schedule of Events	6
13. Start	10
14. Recalls	10
15. Shortening the Course	10
16. Alternative Penalties	10
17. Boats Not Finishing	10
18. The Finish	10
19. Time Limits	10
20. Protests	10
21. Arbitration	11
22. Handicaps and Scoring	11
23. Safety	11
24. Radio Communication	11
25. Race Results	12
26. Prizes	12

APPENDIX A Courses and Mark Descriptions	13
Course Maps	14
Nautilus Classic Courses	15
General Courses	16
Windward/Leeward Courses and Mark Descriptions	27
Important Race Week Communications	28
Important Race Week Numbers	28
Tide Predictions	29
National Jury	29
Weather	29
Management Team	29
Whitsunday Tidal Flow	30
Shallow Water Warning Buoys	31
MSQ Notice to Mariners	32
Aircrafts on Approach to Hamilton	33
Media Notice for Sailors	34
Aircraft are Hazardous to Yachts	34
Yachts are Hazardous to Aircraft	34
Code Flags	35
Rules for watching marine mammals	36

SAILING INSTRUCTIONS

Hamilton Island Yacht Club (HIYC) as the organising authority will conduct Hamilton Island Race Week 2025 on the waters of the Whitsunday Group from Sunday 17th to Saturday 23rd August 2025.

1. RULES

- 1.1 The regatta will be governed by the rules as defined in the 2025-2028 Racing Rules of Sailing (RRS) of World Sailing (WS), the Special Regulations of Australian Sailing (AS), the 2025 IRC rule (parts A, B & C) and AS prescriptions to the IRC rule where applicable, all as modified by these sailing instructions.
- 1.2 RRS 52 is changed to permit powered winches for all boats.
- 1.3 Boats not racing in an IRC Class (that allows variable and/or movable ballast) shall request permission from the race committee to use movable and/or variable ballast for the purpose of increasing stability. Any such request must be accompanied by full details of the system involved, and any such system will be considered in establishing the boat's handicap. Stored power may be used for the operation of movable ballast systems. RRS 51 and 52 are changed to the extent required by this paragraph.
- 1.4 Boats entered in the Non-Spinnaker division shall not carry spinnakers or code zero sails but may use a whisker-pole to pole out one headsail to windward. Furthermore, a headsail used by a boat in the Non-Spinnaker division shall be fully hanked to the forestay or attached to a forestay by means of a luff groove device.
- 1.5 Nothing in the notice of race or sailing instructions relieve a boat of her responsibility under civil law to comply with the International Regulations for Preventing Collisions at Sea or local regulations.
- 1.6 Between sunset and sunrise, when a boat cannot determine with certainty what tack another boat is on, she shall keep clear of that boat. Competitors are reminded that part of the RRS definition of "room" includes considering the existing conditions (including visibility).
- 1.7 A current or fully amended paper chart AUS252 or Electronic Chart System (ECS) covering the sailing area shall be carried on board. All electronic chart data is to be downloaded to an ECS or available on a data storage device prior to starting and not dependent on internet or phone service connection.
- 1.8 The owner and skipper of all boats shall ensure that no entities form unauthorised associations between themselves (and their products or services) and the event (otherwise known as "ambush marketing") or any "hijack signage" is carried out, by or on behalf of themselves or their sponsors with reference to the event and that nothing else is done which might undermine the event, the rights of the event sponsor, or any other sponsor or participant in the event.
- 1.9 Before the first race of the regatta, all IRC rated boats in the Rating Division shall submit a Crew List Declaration on board for the duration of the regatta (AS prescription to IRC Rules 11.1 and 11.3).
- 1.10 In accordance with RRS 42.3(i), a boat may use her engine whilst racing:
 - a. to avoid interfering with commercial traffic or aircraft operations.
 - b. if she has run aground.
 - c. to avoid running aground.
 - d. to avoid a collision.

A declaration detailing the use of the engine (including reason, location, and length of time used) shall be made at the regatta office as soon as possible after finishing.

Only the Race Committee may protest for an alleged breach of rule 42.3(i). This changes RRS 60.1.
- 1.11 Boats shall not use 4G/5G Boosters or Signal Repeaters at

any time including when not racing or within the Hamilton Island Marina or near vicinity.

- 1.12 Boats shall not use boat tracking, photography, or video for commercial purposes without prior written approval of the organising authority.
- 1.13 Unauthorised use of unmanned aerial vehicles ("UAV" aka "drone") anywhere on Hamilton Island and surrounding waters is prohibited at any time. A boat is liable for actions of unauthorised UAV use when the use is associated with that boat. The standard penalty shall be Disqualification Not Excludable (DNE).
- 1.13.1 **Media Personnel and Guests**

The objective of this sailing instruction is to allow Media Personnel (also referred to as Guests) and Guests to sail to experience the excitement of a world class event.
- 1.13.2 **Guest Safety** The person-in-charge shall ensure that the yacht has sufficient personal safety equipment (e.g. lifejackets, harnesses, heavy weather gear) for the maximum number of persons on board. The guests will not be counted toward the crew number for IRC rule 22.4. Before the start, the person-in-charge shall, in writing to the race committee, apply to and obtain from, the Race Committee written permission to carry Guest(s) giving the names of each Guest and a statement confirming that he/she is physically fit and undertakes the exercise entirely at his/her own risk. A form to obtain permission is available at Race Office.
- 1.13.3 **Guest status while racing** Guests shall not take part in the sailing of the boat and unless detailed in this instruction, shall not act to improve its performance in any way. Guests shall not place any part of their body outside the sheer line of the boat to improve stability of performance. They shall remain in the cockpit or aft of the helm except when briefly when in transit to or from the companionway to go to or arrive from below decks. A boat is liable for actions of its guest.
- 1.14 RRS 41(c) is changed as follows:

A boat shall not receive help from any outside source, except help in the form of information which is freely available to all boats, which shall include navigational, weather, tide or current information from any source which is available to all boats whether or not by payment of a fee or subscription, but shall not include information gathered or the subject of interpretation by, or any advice received from, any person not on board the boat and which is specific to the boat and her situation.

By way of an example and interpretation, downloading charts, weather and/or tidal GRIB files from subscription services, or having such information passed to the boat in its pure form, is permitted.

The use by competitors of publicly available cloud-based weather routing services is permitted. Receiving messages or information which is the result of human interpretation as it applies to the boat is not permitted.

A boat may, without infringing RRS 41, request and receive repetition of information broadcast by the Race Committee or be told whether or not a broadcast has been made.
- 1.15 For Dent Passage starts only, the definition of **Start** is changed under World Sailing Test Rule DR21-01 as detailed in S.I. 13.1

2. AIRCRAFT MOVEMENTS (ALWAYS APPLIES INCLUDING WHEN NOT RACING)

- 2.1 During aircraft movements, boats shall keep clear of the designated Dent Passage aircraft flight path zone as shown on Maritime Safety Queensland, Notice to Mariners 157 of 2019 and the height restrictions from the end of the runway.
- 2.2 During aircraft movements this area is deemed an obstruction in accordance with RRS definition, 'Obstruction'.

- 2.3 During aircraft movements the race committee may have a marshal or race committee vessels in the vicinity of the designated Dent Passage aircraft flight path zone. Boats shall comply with any directions given from the marshal or race committee vessels. Marshal vessels may be identified by displaying a flag with a black letter "M". Race committee vessels may be identified by displaying a flag with black letters "RC".
- 2.4 Boats shall maintain a listening watch on the VHF race frequency when in the vicinity of Dent Passage for directions from the race committee.
- 2.5 Only the Race Committee may protest for an alleged breach of this S.I. 2. This changes RRS 60.1. The penalty for breaking this rule shall be Disqualification Not Excludable (DNE).

3. RESPONSIBILITY

- 3.1 All those taking part in these races do so at their own risk and responsibility. Neither Hamilton Island Yacht Club Inc. nor any other club or company connected with the organising of these races is responsible for the seaworthiness of a boat whose entry is accepted, nor for the sufficiency or adequacy of its equipment. Owners shall accept full responsibility for the seaworthiness and safe navigation of their boats and competence of their crews.
- 3.2 Boat owners, skippers and crew should be aware that there may be uncharted obstacles under the waters on which races are held. Such uncharted obstacles include reefs, bomboras and rocks which could be a danger to boats and crews. Hamilton Island Yacht Club Inc. accepts no responsibility for any damage to or loss of any boat or for injury to, or death of, any crew person which may occur as a result of a collision with any underwater obstacle. All boats compete in races at their own risk.
- 3.3 Attention is drawn to Fundamental Rule 3, which states "The responsibility for a boat's decision to participate in a race or to continue racing is hers alone".

4. REGATTA OFFICE AND OFFICIAL NOTICE BOARD

The regatta office will be located on the top floor of the Hamilton Island Yacht Club (HIYC) building. The official notice board will be the on-line notice board located on the event website (<https://www.hamiltonislandraceweek.com.au/on-water-events>). Additionally, an electronic display may be in the foyer of HIYC may also display official notices.

5. PENNANTS, BOOM STICKERS, HULL DECALS & IDENTIFICATION NUMBERS

- 5.1 Backstay flags, sponsors flags, boom stickers and hull decals may be provided by the organising authority or event sponsors. If provided, flags shall be flown from the backstay, or conspicuously near the stern, at all times whilst racing, boom stickers shall be attached to the boom and hull decals shall be attached to the topsides approximately one metre from the bow. Only the Race Committee may protest for an alleged breach of this S.I. This changes RRS 60.1.
- 5.2 Boats that do not have sail numbers or have sails with conflicting sail numbers, shall display a bow number, which will be provided. The bow number shall be located on both sides of the hull forward of any sponsors decals. This changes RRS 77.

6. SIGNALS MADE ASHORE

- 6.1 Signals made ashore will be displayed from the flagpole located in the vicinity of the marina entrance signboard on the northern break-wall of the Hamilton Island Marina.
- 6.2 When a signal is displayed over a class flag, it shall apply to that class only.
- 6.3 When Code Flag "AP" (Answering Pennant) is flown ashore, with two sounds (one sound when lowered) means, "The race is postponed. The warning signal will be made not less than 45 minutes after this signal is lowered". (This changes RRS Race Signals "AP").
- 6.4 Signals displayed from the main mast on the deck of Hamilton Island Yacht Club will be deemed to be displayed afloat.

7. NOTICES TO COMPETITORS

- 7.1 Notices to competitors will be posted on the official on-line notice board on the event website (<https://www.hamiltonislandraceweek.com.au/on-water-events>).
- 7.2 Any change to sailing instructions made ashore will be posted at least one hour before the start of the race affected and a notice to competitors will be published on the official notice board and signalled by an SMS message to all boats. This changes RRS Race Signals "Other Signals".
- 7.3 Changes to the sailing instructions made afloat, or from the Dent Passage starting line during a scheduled start, will be indicated by the display of Code Flag 3rd Substitute accompanied by two sound signals. The change will be communicated orally on the designated course VHF channel or in writing by notice on the notice board or by SMS.

8. DAILY REPORTING

The race committee will contact each boat by SMS between 0830 hrs and 0900 hrs each race day. The SMS message will provide a boat specific Web link. Each yacht shall respond via the Web link within 90 minutes of her scheduled start indicating her intention to start and the number of Persons on Board (P.O.B.)

9. DIVISIONS AND FLAGS

Division	Class Flag and Backstay Flag
Rating Division 1	Gold
Rating Division 2	Gold / Black
Rating Division 3	Gold / White
Super 40 Class	Gold / Purple
Hamilton Island Blue Division	Light Blue
Hamilton Island Pink Division	Pink
Hamilton Island Yellow Division	Fluro Yellow
Hamilton Island Orange Division	Orange
Trailer Yacht	Yellow / Blue
Non-Spinnaker	Grey
Multihull Racing	Purple
Hamilton Island Multihull Black Division	Black
Hamilton Island Multihull White Division	White

Boats shall fly the Backstay flag above any event sponsors pennant whilst racing and shall be flown from the backstay or conspicuously from the stern for boats without a backstay.

10. COURSES AND MARKS OF THE COURSE

See appendix "A"

11. RACE COMMITTEE VESSELS

Race committee start vessels will display the HIYC burgee when on station.

12. SCHEDULE OF EVENTS

Date	Division	Event
Sunday 3rd Aug	All Classes	Entries close (see NoR 8.2 entries limits)
Friday 15th Aug	All Classes	Registration – 1400 hrs to 1700 hrs.
Saturday 16th Aug	All Classes	Registration – 1000 hrs to 1630 hrs.
Sunday 17th Aug	All Classes	Around-the-Islands race
Monday 18th	All Classes	Around-the-Islands race
Tuesday 19th Aug	Rating Division 1 & Multihull Racing	Nautilus Marine Classic Long Race
	Rating Division 2 & Hamilton Island Blue Division	Nautilus Marine Classic Medium Distance Race
	Super 40 Class	3 x short races (Island or W/L)
	All other Classes	Around-the-Islands race
Wednesday 20th Aug	All Classes	Lay day - Shore side activities
Thursday 21st Aug	All Classes	Prix d'Elegance Parade 0930 - 1030
	Rating Divisions 1, 2 & 3	2 x Short races (Island or W/L)
	All other Classes	Around-the-Islands race
Friday 22nd Aug	Multihull Racing	2 x Short races (Island or W/L)
Saturday 23rd Aug	All other Classes	Around-the-Islands race
Presentation of Trophies		

The race committee may make changes to this schedule at any time.

Sunday 17th August

Start Time	Division	Course	Starting Area	VHF
1115	Trailer Yacht	Island	Eastern	Ch 72
1120	Non-Spinnaker	Island	Eastern	Ch 72
1125	Hamilton Island Orange Division	Island	Eastern	Ch 72
1130	Hamilton Island Yellow Division	Island	Eastern	Ch 72
1135	Hamilton Island Pink Division	Island	Eastern	Ch 72
1140	Hamilton Island Multis White Div.	Island	Eastern	Ch 72
1145	Hamilton Island Multis Black Div.	Island	Eastern	Ch 72
1130	Rating Division 1	Island	Dent Passage	Ch 77
1135	Rating Division 2	Island	Dent Passage	Ch 77
1140	Rating Division 3	Island	Dent Passage	Ch 77
1145	Super40 Class	Island	Dent Passage	Ch 77
1150	Hamilton Island Blue Division	Island	Dent Passage	Ch 77
1155	Multihull Racing	Island	Dent Passage	Ch 77

Monday 18th August

Start Time	Division	Course	Starting Area	VHF
1030	Trailer Yacht	Island	Dent Passage	Ch 77
1035	Non-Spinnaker	Island	Dent Passage	Ch 77
1040	Hamilton Island Yellow Division	Island	Dent Passage	Ch 77
1045	Hamilton Island Orange Division	Island	Dent Passage	Ch 77
1050	Hamilton Island Pink Division	Island	Dent Passage	Ch 77
1055	Hamilton Island Multis White Div.	Island	Dent Passage	Ch 77
1100	Hamilton Island Multis Black Div.	Island	Dent Passage	Ch 77
1045	Hamilton Island Blue Division	Island	Eastern	Ch 72
1050	Rating Division 1	Island	Eastern	Ch 72
1055	Rating Division 2	Island	Eastern	Ch 72
1100	Rating Division 3	Island	Eastern	Ch 72
1105	Super40 Class	Island	Eastern	Ch 72
1110	Multihull Racing	Island	Eastern	CH 72

Tuesday 19th August

Start Time	Division	Course	Starting Area	VHF
Start Time	Division	Course	Starting Area	VHF
0940	Multihull Racing	Long Distance Race	Dent Passage	Ch 77
0945	Rating Division 1	Long-Distance Race	Dent Passage	Ch 77 & 81
0950	Rating Division 2	Medium-Dist. Race	Dent Passage	Ch 77
0955	Rating Division 3	Island	Dent Passage	Ch 77
1000	Hamilton Island Blue Div.	Medium-Dist. Race	Dent Passage	Ch 77
1030	Trailer Yacht	Island	Dent Passage	Ch 77
1115	Non-Spinnaker	Island	Eastern	Ch 72
1120	Hamilton Island Multis Black Div.	Island	Eastern	Ch 72
1125	Hamilton Island Multis White Div.	Island	Eastern	Ch 72
1130	Hamilton Island Orange Division	Island	Eastern	Ch 72
1135	Hamilton Island Yellow Division	Island	Eastern	Ch 72
1140	Hamilton Island Pink Division	Island	Eastern	Ch 72
1150	Super40 Class	3 x short races	Eastern	Ch 72

Wednesday 20th August

Lay Day all Classes – Shore side activities

Thursday 21st August

Start Time	Division	Course	Starting Area	VHF
0930 – 1030	All divisions - Prix d'Elegance Parade	Dent Passage	Ch 77	Ch 77
1115	Hamilton Island Yellow Division	Island	Dent Passage	Ch 77
1120	Hamilton Island Orange Division	Island	Dent Passage	Ch 77
1125	Hamilton Island Pink Division	Island	Dent Passage	Ch 77
1130	Hamilton Island Multis Black Div.	Island	Dent Passage	Ch 77
1135	Hamilton Island Multis White Div.	Island	Dent Passage	Ch 77
1140	Non-Spinnaker	Island	Dent Passage	Ch 77
1145	Trailer Yacht	Island	Dent Passage	Ch 77
1140	Multihull Racing	Island	Eastern	Ch 77
1145	Hamilton Island Blue Division	Island	Eastern	Ch 72
1150	Super40	Island	Eastern	Ch 72
1200	Rating Division 1	2 x short races	Eastern	Ch 72
1205	Rating Division 2	2 x short races	Eastern	Ch 72
1210	Rating Division 3	2 x short races	Eastern	Ch 72

For multiple races subsequent races will be started as soon as practicable after the completion of the previous race.

Friday 22nd August

Start Time	Division	Course	Starting Area	VHF
1100	Trailer Yacht	Island	Eastern	Ch 72
1105	Non-Spinnaker	Island	Eastern	Ch 72
1110	Hamilton Island Multis Black Div.	Island	Eastern	Ch 72
1115	Hamilton Island Multis White Div.	Island	Eastern	Ch 72
1120	Hamilton Island Pink Division	Island	Eastern	Ch 72
1125	Hamilton Island Yellow Division	Island	Eastern	Ch 72
1130	Hamilton Island Orange Division	Island	Eastern	Ch 72
1140	Multihull Racing	2 x short races	Eastern	Ch 72
1100	Rating Division 1	Island	Dent Passage	Ch 77
1105	Rating Division 2	Island	Dent Passage	Ch 77
1110	Rating Division 3	Island	Dent Passage	Ch 77
1115	Super40	Island	Dent Passage	Ch 77
1120	Hamilton Island Blue Division	Island	Dent Passage	Ch 77

Saturday 23rd August

Start Time	Division	Course	Starting Area	VHF
Start Time	Division	Course	Starting Area	VHF
1120	Trailer Yacht	Island	Dent Passage	Ch 77
1125	Non-Spinnaker	Island	Dent Passage	Ch 77
1130	Hamilton Island Yellow Division	Island	Dent Passage	Ch 77
1135	Hamilton Island Orange Division	Island	Dent Passage	Ch 77
1140	Hamilton Island Pink Division	Island	Dent Passage	Ch 77
1145	Hamilton Island Multis White Div.	Island	Dent Passage	Ch 77
1150	Hamilton Island Multis Black Div.	Island	Dent Passage	Ch 77
1155	Super40	Island	Dent Passage	Ch 77
1115	Multihull Racing	Island	Eastern	Ch 72
1120	Hamilton Island Blue Division	Island	Eastern	Ch 72
1125	Rating Division 1	Island	Eastern	Ch 72
1130	Rating Division 2	Island	Eastern	Ch 72
1135	Rating Division 3	Island	Eastern	Ch 72

13. START

- 13.1 For Dent Passage races only, a boat **starts** when her hull, having been entirely on the pre-start side of the starting line, any part of her hull crosses the starting line from the pre-start side to the course side either

(a) at or after her starting signal, or

(b) during the last 60 seconds before her starting signal.

When a boat starts in accordance with item (b) of the definition Start, she may return to the pre-start side of the line to comply with item (a) of the definition of Start, but, if she does not, the starting penalty shall be:

- For a boat attempting to return to the pre-start side of the line to start during the whole period of 4 minutes after her starting signal but fails, shall have a 5 minute penalty added to her elapsed time. Notice of this penalty may be communicated by VHF or on the water by a race committee vessel.
- For a boat not attempting to return to the pre-start side of the line to start for the whole period of 4 minutes after her starting signal, shall have a 10 minute penalty added to her elapsed time.

- 13.2 A boat starting later than 10 minutes after her starting signal will be scored Did Not Start (DNS). This changes RRS A4.1

- 13.2 **Dent Passage starting line.** The starting line will be between the flagpole on the HIYC displaying the HIYC burgee, and a yellow inflatable buoy laid in Dent Passage.

The race committee may move the starting line to an on-water start in the vicinity of north Dent Passage. For an on-water Dent Passage start, the starting line will be between the signal mast displaying an orange flag on the race committee vessel, and a yellow inflatable buoy laid nearby.

- 13.3 **Eastern starting line.** The starting line will be laid in the area between Catseye Bay and Craig Point to the North-East of Hamilton Island and will be between the signal mast displaying an orange flag on the race committee vessel and a yellow inflatable buoy laid nearby.

- 13.4 For all on-water starts, an inner limit buoy may be laid near the race committee vessel approximately on the starting line. Boats shall not pass between this buoy and the race committee vessel at any time. Only the Race Committee may protest for an alleged breach of this S.I. 13.4. This changes RRS 60.1.

14. RECALLS

- 14.1 Following a general recall the new start will be five (5) minutes after the recalled start.

One minute after the recalled start the First Substitute will be lowered, the class flag(s) for the division to be re-started will be hoisted along with the preparatory signal. (This changes RRS 26, 29.2 and Race Signals "First Substitute")

- 14.2 Following a general recall the start(s) for the following division(s) will be delayed accordingly.

- 14.3 In addition to the requirements of RRS 29, the race committee MAY call boats on the designated course VHF channel.

15. SHORTENING THE COURSE

Courses may be shortened at any part of the course. Boats shall finish between the race committee vessel displaying code flag "S" and the inflatable mark moored nearby, or the nearest point of land if no mark is laid. This changes RRS 32 and Race Signals.

16. ALTERNATIVE PENALTIES

- 16.1 For races designated Short Races or W/L races, the Two-Turns Penalty (RRS 44.1) is changed to a One-Turn Penalty.

- 16.2 For all Multihull races, the Two-Turns Penalty (RRS 44.1) is changed to a One-Turn Penalty.

17. BOATS NOT FINISHING

Boats not finishing a race shall inform the race committee on the appropriate course VHF channel, or by calling the regatta office on 07 4946 8102.

18. THE FINISH

- 18.1 **HIYC finish line.** The finish line will be in Dent Passage and will be between the flagpole on the HIYC displaying the HIYC burgee and a yellow inflatable buoy laid in Dent Passage. The finishing line may be illuminated during the hours of darkness at each end by flashing strobe lights. When crossing the finishing line during the hours of darkness boats shall illuminate their sail number or bow number and confirm her identify on the course VHF channel.

- 18.2 **Golf course jetty finish line.** The race committee may change the course so that the fleet use the golf course jetty finishing line. The finish line will be in Dent Passage and will be located to the southwest of the Hamilton Island Airport runway. Boats will finish between the yellow inflatable buoy at the eastern end of the line and either a staff displaying a blue flag on a race committee vessel anchored at the western end or if a finishing vessel is not on station, a flagstaff displaying a blue flag on the Dent Island golf course jetty (approx. S 20° 21.30', E 148° 56.31'). This change of course shall be notified by the course VHF channel.

- 18.3 **Race committee vessel finish line.** The finish line will be in a similar position to the starting line or as designated in the course descriptions and will be between the signal mast displaying a blue flag on the race committee vessel and a yellow inflatable buoy moored nearby.

19. TIME LIMITS

19.1

Course	Time Limit	Finishing Window
Windward/Leeward course	2 hours	30 minutes
Course 32	3 hours	45 minutes
Nautilus Long-Distance race	12 hours	0 minutes
Nautilus Medium-Distance Race	9 hours	0 minutes
All other courses	6 hours or sunset (whichever is earlier)	0 minutes

- 19.2 The Finishing Window is the time for boats to finish after the first boat in the Division sails the course and finishes. A boat still racing when her finishing window of the time limit expires will be scored points equal to the number of boats finishing within the finishing window plus 25% of the number of starters in her division, rounded to the nearest whole number, but no more points than the number of starters. Such boats will be scored Time Limit Expired (TLE). This changes RRS 35, A4, A5 and A10. Prior to the time limit expiring, the race committee may offer the score of TLE to boats still racing that the RC consider may not make the time limit. This changes rules 28.1, 35, A4, A5 and A10.

20. PROTESTS

- 20.1 An International Jury has been appointed, and the right of appeal is denied in accordance with RRS Rule 70.3(a), 91(b) and Appendix N. A notice has been posted on the official notice board confirming the names of the Jury.

- 20.2 RRS 60.2 (c) is changed by deleting the word "serious".

- 20.3 Protests shall be delivered to the regatta office within 90 minutes after the finish time of the last boat in her division (or in the last race of the day when multiple races are conducted) or if the regatta office is closed at night, by 0900 hours the next day.
- 20.4 Protests will be heard as soon as practicable after racing. The jury room will be located on the top floor of the HIYC.
- 20.5 Notification of the details of protest hearings will be placed on the official notice board as soon as possible to inform competitors where and when there is a hearing in which they are parties to a protest or named as a witness. These notices are deemed to fulfil the requirements of RRS 63.1. Representatives of boats, who are parties to hearings, and their witnesses, are advised to remain on call in the vicinity of the regatta office (or such other place as directed by the jury secretary).

- 20.6 Unless otherwise stated in a rule, the jury may apply a penalty other than disqualification (which may include no penalty.) This changes RRS 60.5.

21. ARBITRATION

- 21.1 Arbitration will be used in accordance with RRS Appendix "T".
- 21.2 The arbitrator may be a member of any subsequent jury or may give evidence to the jury.

22. HANDICAPS AND SCORING

- 22.1 The scoring system shall be the Low Point System, RRS Appendix A except if there are five or less races sailed for a division then all races will count. One race will constitute a series in each division. The number of scheduled races and handicap system in each class is as follows:

HANDICAPS AND SCORING

Class	No. of Scheduled Races	Handicap System	Multiplier
Rating	7	IRC	Time Corrector (TCC)
Super 40 Class	8	PHRF (Super 40) and IRC TCC	PHRF Time Correction Time Corrector (TCC)
Hamilton Island	6	Event Handicap (EHC)	Time Correction Factor (TCF)
Non-Spinnaker	6	Event Handicap (EHC)	Time Correction Factor (TCF)
Hamilton Island Multihull	6	Event Handicap (EHC)	Time Correction Factor (TCF)
Multihull Racing	7	OMR	OMR Time Corrector
Trailer Yacht	6	Event Handicap (EHC)	Time Correction Factor (TCF)

- 22.2 Results will be calculated by the application of the appropriate class multiplier of elapsed time as shown in the table above. The boat with the lowest corrected time (after application of scoring penalties, (if any) will be placed first and so on.
- 22.3 Performance Based Handicap TCF's (EHC & TCF) for each boat will be determined by the HIYC handicap committee and may be altered at any time. The decision of the handicap committee or their representative on any handicap matter will be final and will not be grounds for requests for redress. This changes RRS 61.1 (a).

23. SAFETY

- 23.1 The safety regulations will be the AS Special Regulations Part 1 for Category 5 races and they apply to all boats.
- 23.2 A boat may be inspected at any time for compliance with the Special Regulations or Rating Certificate.

24. RADIO COMMUNICATION

- 24.1 The following communications may be made by the race committee on VHF: time checks and starting times, starting order and designation of race areas, confirmation of any visual signal displayed, courses including bearing and distance to the first mark, change of course, shortening, postponement, abandonment and other information explaining the intentions of the race committee. The race committee may also transmit course and other information by Short Message Service (SMS).
- Delay in the broadcast of these calls, or the order in which they are made, or any omission or failure in the transmission or reception of these, will not be grounds for a request for redress by a boat. This changes RRS 61.1(a).

- 24.2 In accordance with SI 2.4 boats shall maintain a radio watch on the race frequency when in the vicinity of Dent Passage and shall comply with the directions given by the race committee, marshal, or race committee vessels. Refer SI 2.4.

24.3 Long-Distance Race

During the Nautilus Classic Long-Distance Race, the leading boat and the last boat are requested to call the race committee (VHF Ch 81) as they round each major mark of the course. Mandatory position reporting radio schedules on VHF channel 81 will be conducted at 1803 hrs and 2103 hrs. Boats still racing will be called in alphabetical order at these times. Breaches of this rule may only be protested by the race committee. This changes rules 60.1.

25. RACE RESULTS

Results for each race will be posted on the event website (www.hamiltonislandraceweek.com.au) as soon as practicable after each race.

26. PRIZES

- 26.1 Daily Prizes will be awarded for 1st, 2nd, and 3rd on corrected time in each race for each division except if there are multiple races held for a division the day's totalled race scores will determine the winners. Daily Prizes will be presented on the main stage opposite the Marina Tavern at approximately 1730 hrs after racing each day. Divisions with less than six (6) boats may be awarded trophies for 1st place only.
- 26.2 At the conclusion of the regatta trophies will be awarded to 1st, 2nd and 3rd place in all divisions based on their overall points score. Divisions with less than six (6) boats may be awarded trophies for 1st place only.
- 26.3 In addition the following special awards will be made at the trophy presentation.
- Gun Boat Trophy for the boat which has the most line honours.
 - The Leon O'Donoghue Trophy for "Boat of the Week"
 - The Don McLean North Queensland Trophy for the best performing boat whose home port is between Bundaberg & Port Douglas.
 - The Prix d'Elegance for the best presented boat and crew.
 - The Prix d'Elegance for the best themed boat and crew.
- (The race committee will determine the winners of these special awards using whatever criteria they deem appropriate.)
- 26.4 Trophies will be presented at a ceremony on the evening of Saturday 23rd August 2025 at the Convention Centre, Hamilton Island.

APPENDIX “A” COURSES AND MARK DESCRIPTIONS

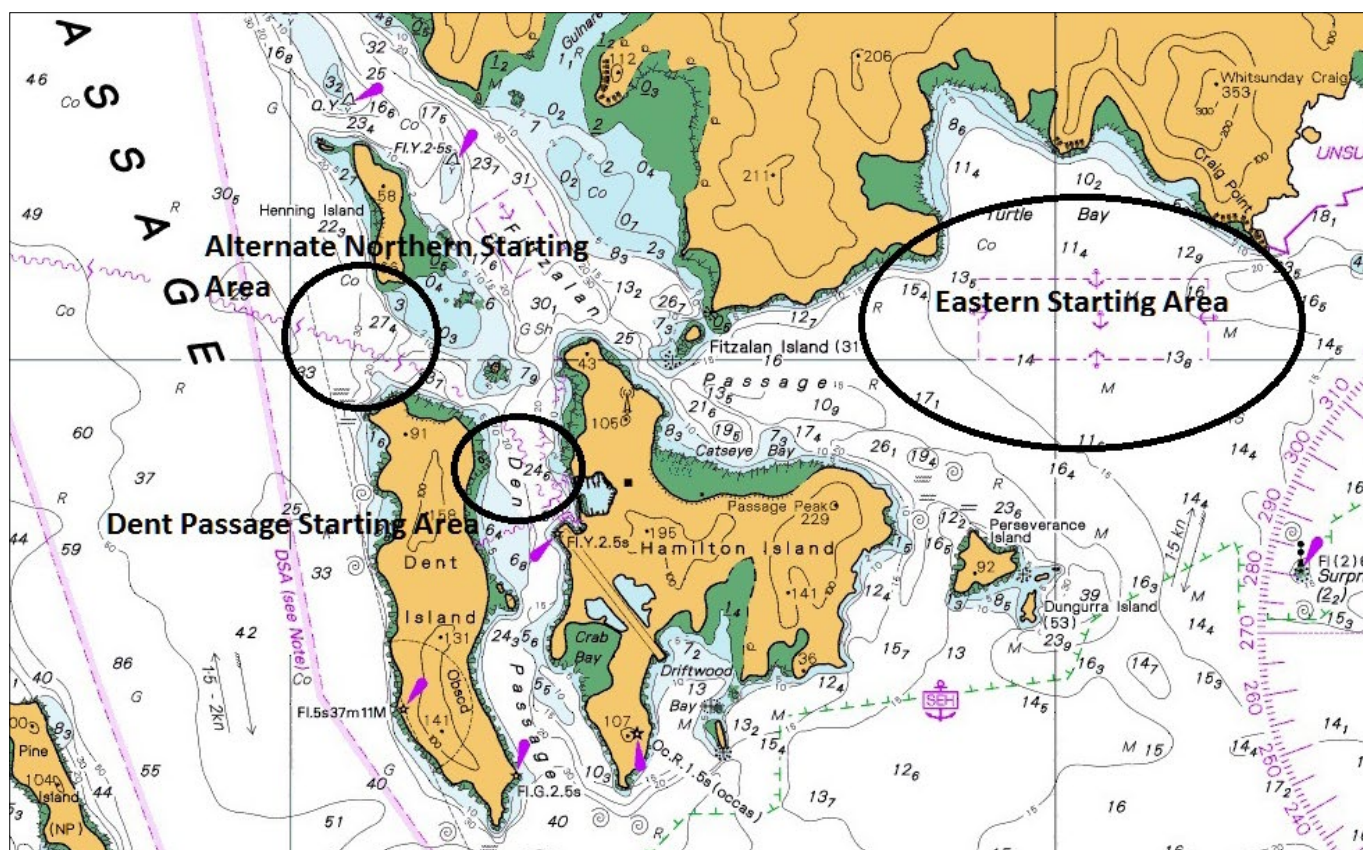
- A1 For Dent Passage starts, the course will be broadcast on the course VHF channel as soon as practical after the warning signal for each division. Courses will also be notified by SMS and will be posted on the official notice board each day. This changes RRS 27.1
- For on-water starts the course for each division will be signalled on a numeral board displayed from the race committee vessel at the warning signal. The course to be sailed may also be broadcast on the designated course VHF channel.
- A2 The following course descriptions list the order marks and which side they are to be rounded. Please note; marks denoted * are passing marks. If a laid mark is missing or out of position by more than 0.2 of a nautical mile, boats shall round the charted position of the missing mark.
- A3 The approximate position given is the pinnacle of the island or rock designated as a mark of the course. Marks designated as Laid Marks will be white cube inflatable buoys.
- A4 All Passage Courses starting in the Eastern Starting Area may have a white inflatable windward mark laid at approximately 0.8 nm – 1.75 nm from the starting line as the first rounding mark of the course. The direction of rounding the mark will be indicated from near the bow of the race committee vessel – green flag for starboard rounding, red flag for port rounding. If no signal is made the mark is deleted from the course.
- A5 Surprise Rock (Approx S 20° 21.31', E 149° 01.59') has a 200-meter Prohibited Water zone around it. The zone is deemed to be an Obstruction (RRS 19, 20).

MARKS OF THE COURSE

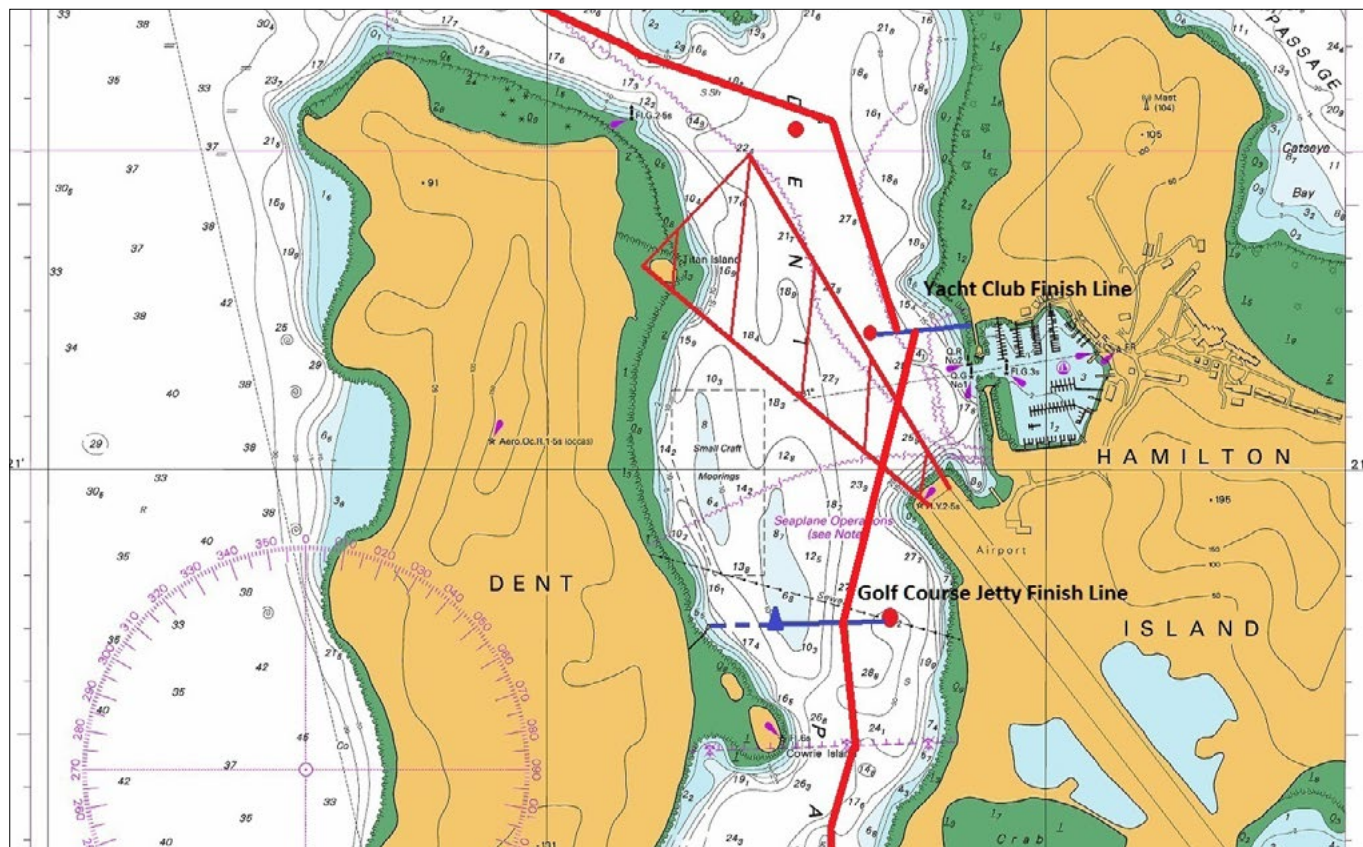
Mark	Position
Ann Island	Approx S 20° 25.22', E 149° 01.01'
Baynham Island	Approx S 20° 26.17', E 149° 06.16'
Cole Island	Approx S 20° 25.51', E 149° 00.45'
Condor Laid Mark	Approx S 20° 14.48', E 148° 54.60'
Coppersmith Rock	Approx S 20° 35.92', E 149° 07.01'
Dead Dog Island	Approx S 20° 32.85', E 149° 07.57'
Daydream Island	Approx S 20° 15.44', E 148° 48.86'
Denman Island	Approx S 20° 16.93', E 148° 50.98'
Dent Island	Approx S 20° 20.95', E 148° 55.85'
Dent Laid Mark	Approx S 20° 20.36', E 148° 56.51'
Dungurra Island	Approx. S 20° 21.55', E 148° 59.82'
Fairlight Rock	Approx S 20° 32.93', E 149° 07.99'
Fitzalan Island	Approx S 20° 19.85', E 148° 57.62'
Hamilton Island	Approx S 20° 20.98', E 148° 58.46'
Henning Island	Approx S 20° 19.38', E 148° 55.63'
Isolated Rock	Approx S 20° 24.35', E 149° 00.39'
Lindeman Island	Approx S 20° 26.74', E 149° 02.78'
Mansell Island	Approx S 20° 28.27', E 149° 07.62'
Mid Molle Island	Approx S 20° 14.80', E 148° 49.86'
North Molle Island	Approx S 20° 13.62', E 148° 49.29'
Pentecost Island	Approx S 20° 23.81', E 149° 01.79'
Pine Island	Approx S 20° 22.63', E 148° 53.44'
Sidney Island	Approx S 20° 26.99', E 149° 00.56'
South Molle Island	Approx S 20° 16.47', E 148° 50.24'
Spitfire Laid Mark	Approx S 20° 28.70', E 149° 01.60'
St Helen Rock	Approx S 20° 33.20', E 149° 04.68'
Thomas Island	Approx S 20° 32.84', E 149° 06.75'
Wirrainbeia Island	Approx S 20° 13.95', E 149° 08.60'
White Rock	Approx S 20° 18.13', E 148° 48.61'
Yellow Special Purpose Mark 1	Approx S 20° 17.83', E 148° 55.00'
Yellow Special Purpose Mark 2	Approx S 20° 18.80', E 148° 56.05'

COURSE MAPS

Starting Areas



Dent Passage Finish



All Passage Races use the following courses

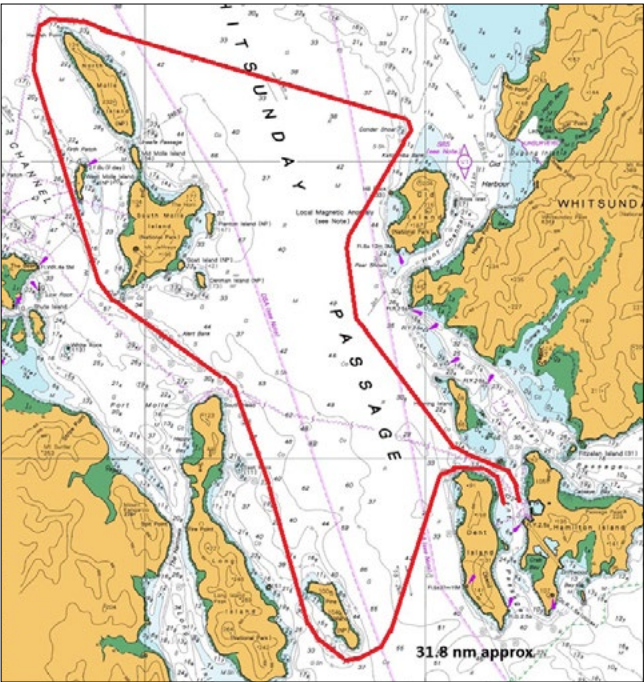
ALL PASSAGE RACES USE THE FOLLOWING COURSES

Nautilus Classic Long Race
- Rating Division 1 and Multihull Racing
48.1 nm approx



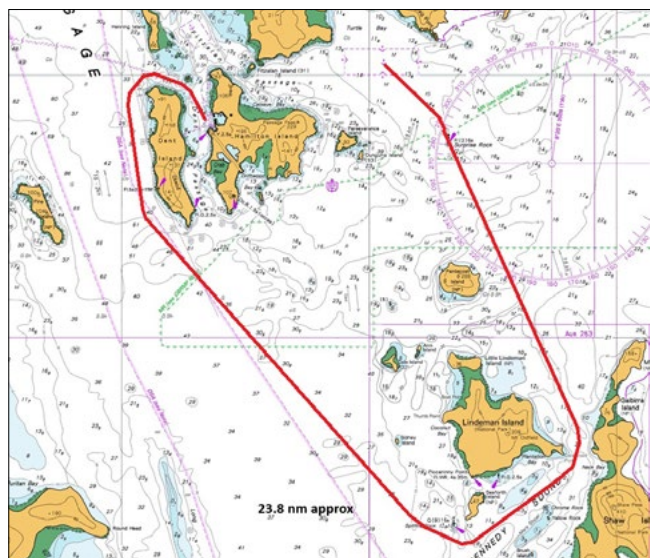
Course Mark	Required Side
Starting line	Dent Passage in a northerly direction
Dent Island	Port
Pine Island	Starboard
South Molle Island	Starboard
Double Cone Island	Starboard
Henning Island	Port
Dent Laid Mark	Starboard
Finishing Line	Dent Passage in a southerly direction

Nautilus Classic Medium-Distance Race –Rating Division 2 &
Hamilton Island Blue Division
31.8 nm approx



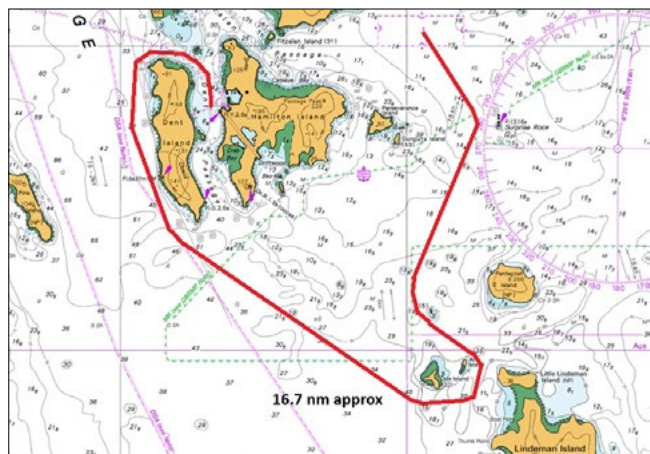
Course Mark	Required Side
Starting line	Dent Passage in a northerly direction
Dent Island	Port
Pine Island	Starboard
North Molle Island	Starboard
Condor Laid Mark	Starboard
Henning Island	Port
Dent Laid Mark	Starboard
Finishing Line	Dent Passage in a southerly direction

Course 1
23.8 nm approx.



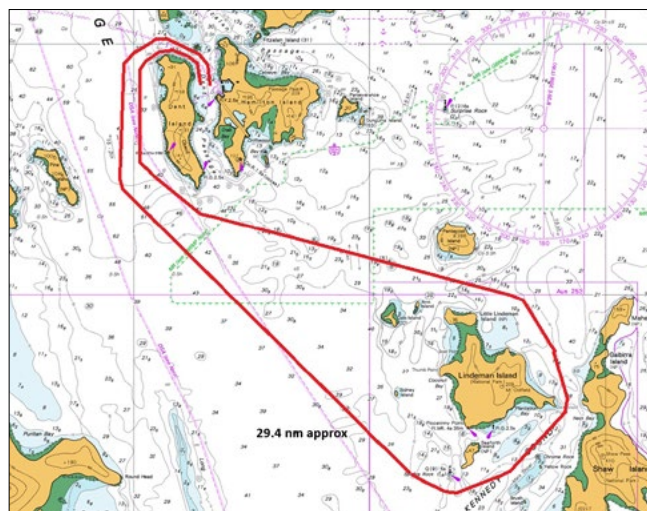
Course Mark	Required Side
Starting line	Eastern Starting Line
Laid Mark	As described in A 4
Lindeman Island	Starboard
Spitfire Laid Mark	Starboard
Dent Island	Starboard
Dent Laid Mark	Starboard
Finishing Line	Dent Passage in a southerly direction

Course 2
16.7 nm approx.



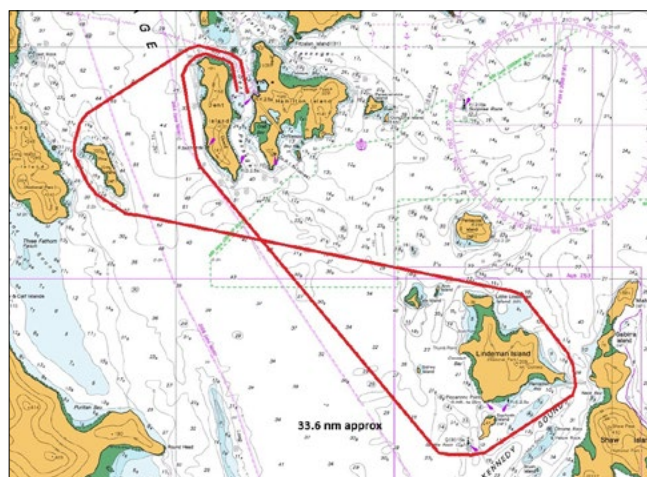
Course Mark	Required Side
Starting line	Eastern Starting Line
Laid Mark	As described in A 4
Isolated Rock	Port
Ann Island	Starboard
Cole Island	Starboard
Dent Island	Starboard
Dent Laid Mark	Starboard
Finishing Line	Dent Passage in a southerly direction

Course 3
29.4 nm approx.



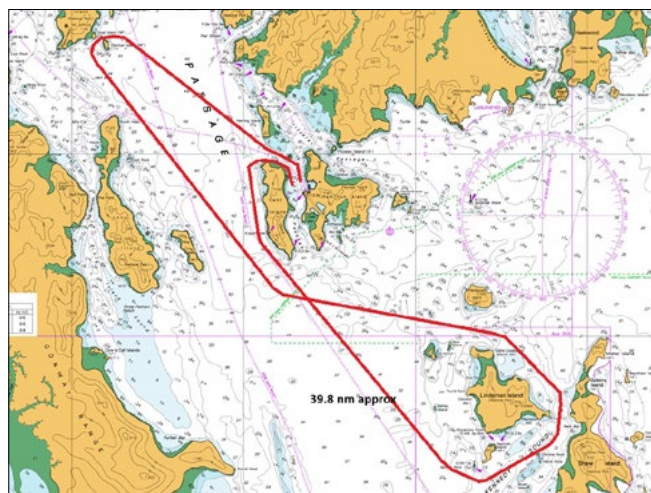
Course Mark	Required Side
Starting line	Dent Passage in a northerly direction
Dent Island	Port
Lindeman Island	Starboard
Spitfire Laid Mark	Starboard
Dent Island	Starboard
Dent Laid Mark	Starboard
Finishing Line	Dent Passage in a southerly direction

Course 4
33.6 nm approx.



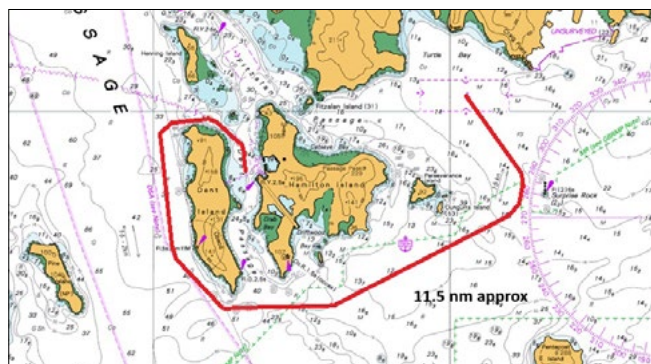
Course Mark	Required Side
Starting line	Dent Passage in a northerly direction
Dent Island	Port
Pine Island	Port
Lindeman Island	Starboard
Spitfire Laid Mark	Starboard
Dent Island	Starboard
Dent Laid Mark	Starboard
Finishing Line	Dent Passage in a southerly direction

Course 5
36.8 nm approx.



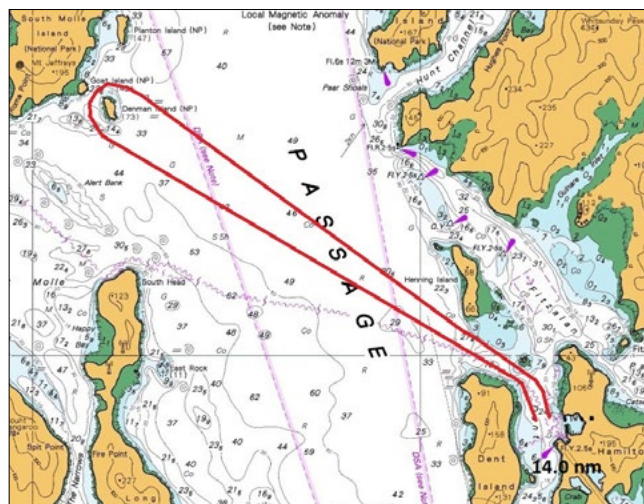
Course Mark	Required Side
Starting line	Dent Passage in a northerly direction
Denman Island	Port
Dent Island	Port
Lindeman Island	Starboard
Spitfire Laid Mark	Starboard
Dent Island	Starboard
Dent Laid Mark	Starboard
Finishing Line	Dent Passage in a southerly direction

Course 6
11.5 nm approx.



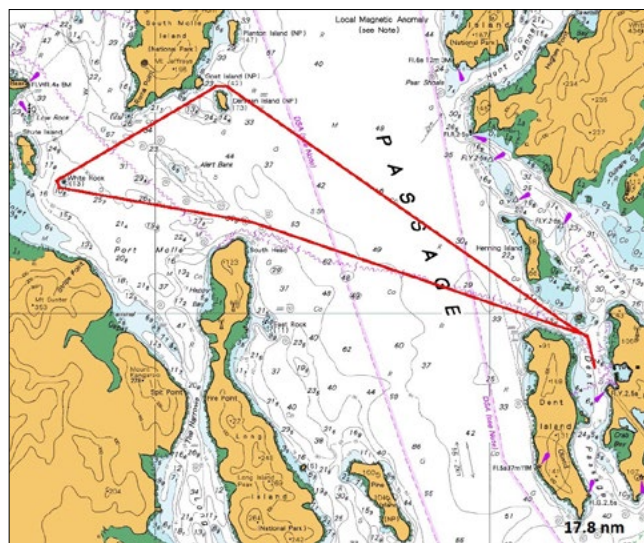
Course Mark	Required Side
Starting line	Eastern Starting Line
Laid Mark	As described in A 4
Hamilton Island Island	Starboard
Dent Island	Starboard
Dent Laid Mark	Starboard
Finishing Line	Dent Passage in a southerly direction

Course 7
14 nm approx.



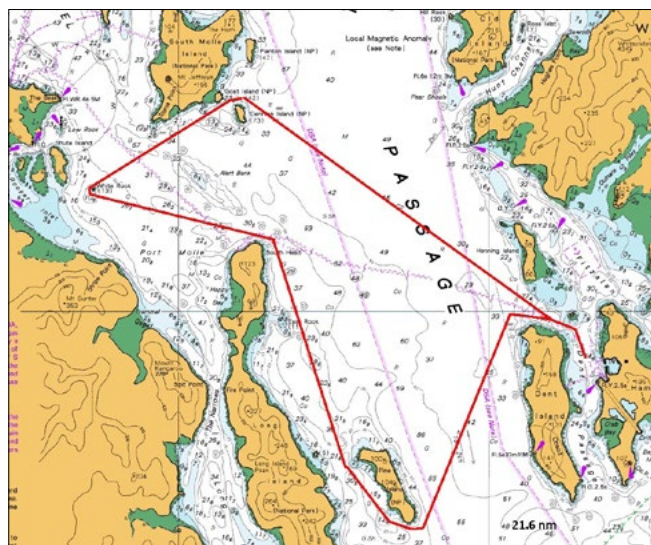
Course Mark	Required Side
Starting line	Dent Passage in a northerly direction
Denman Island	Starboard
Dent Laid Mark	Starboard
Finishing Line	Dent Passage in a southerly direction

Course 8
17.8 nm approx.



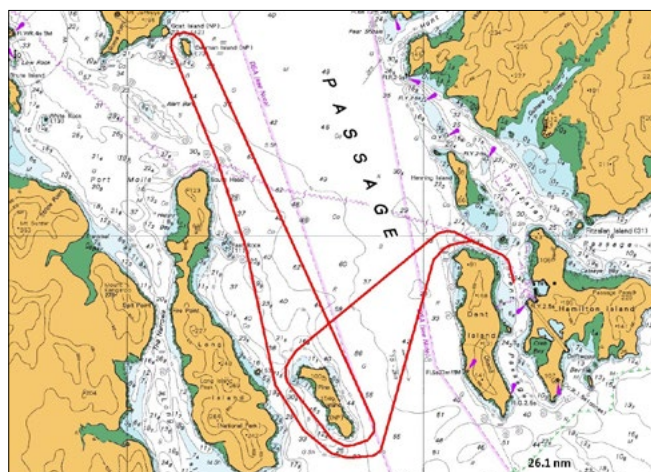
Course Mark	Required Side
Starting line	Dent Passage in a northerly direction
White Rock	Starboard
Denman Island	Starboard
Dent Laid Mark	Starboard
Finishing Line	Dent Passage in a southerly direction

Course 9
21.6 nm approx



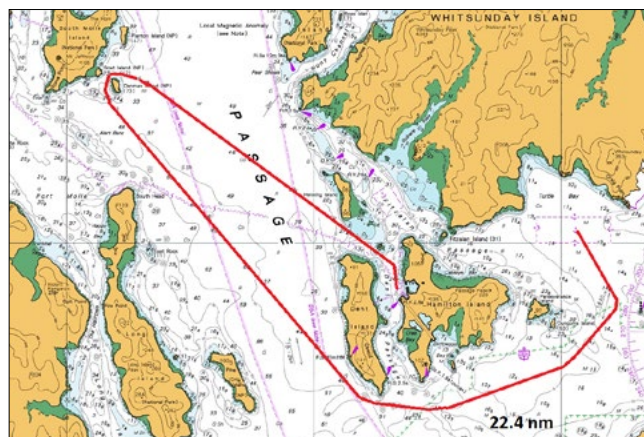
Course Mark	Required Side
Starting line	Dent Passage in a northerly direction
Pine Island	Starboard
White Rock	Starboard
Denman Island	Starboard
Dent Laid Mark	Starboard
Finishing Line	Dent Passage in a southerly direction

Course 10
26.1 nm approx



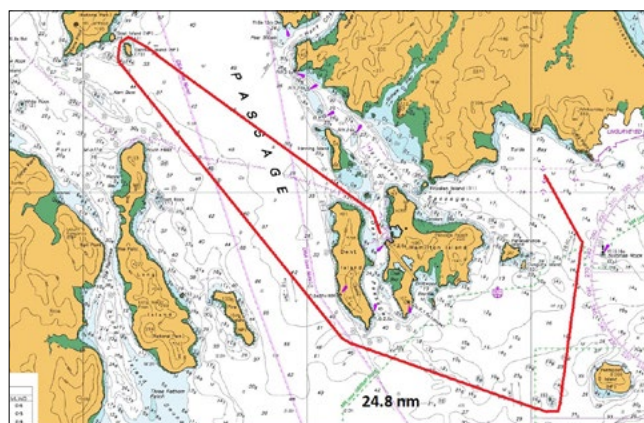
Course Mark	Required Side
Starting line	Dent Passage in a northerly direction
Pine Island	Starboard
Denman Island	Starboard
Pine Island	Starboard
Dent Laid Mark	Starboard
Finishing Line	Dent Passage in a southerly direction

Course 11
22.4 nm approx



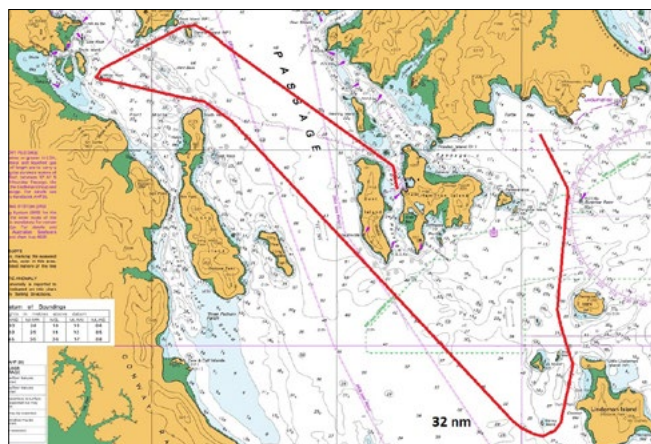
Course Mark	Required Side
Starting line	Eastern Starting Line
Laid Mark	As described in A 4
Dent Island	Starboard
Denman Island	Starboard
Dent Laid Mark	Starboard
Finishing Line	Dent Passage in a southerly direction

Course 12
24.8 nm approx



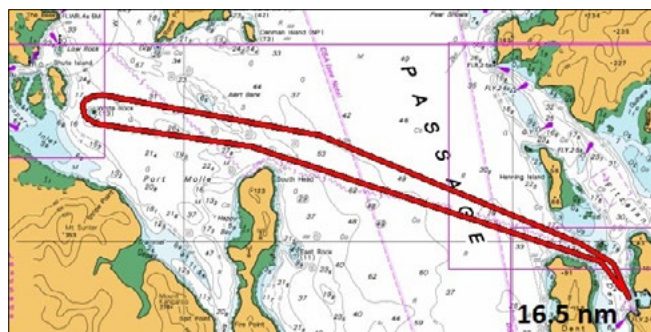
Course Mark	Required Side
Starting line	Eastern Starting Line
Laid Mark	As described in A 4
Isolated Rock	Starboard
Denman Island	Starboard
Dent Laid Mark	Starboard
Finishing Line	Dent Passage in a southerly direction

Course 13
32.0 nm approx



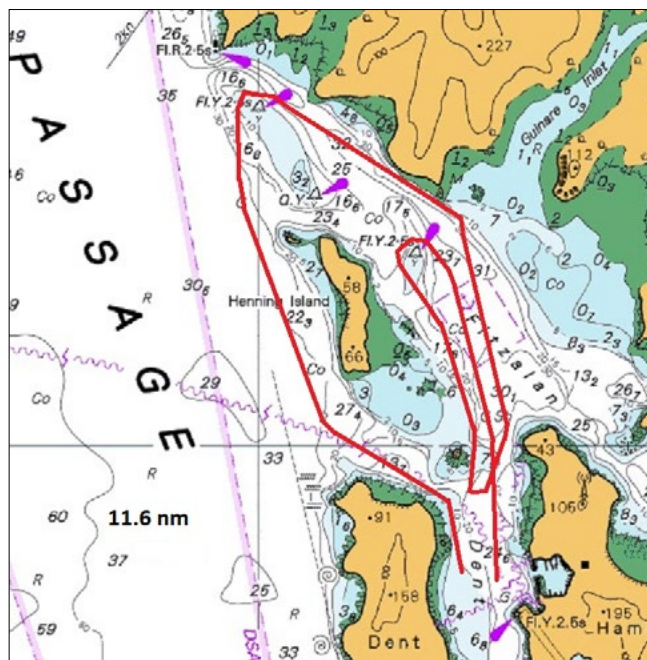
Course Mark	Required Side
Starting line	Eastern Starting Line
Laid Mark	As described in A 4
Sidney Island	Starboard
White Rock	Starboard
Denman Island	Starboard
Dent Laid Mark	Starboard
Finishing Line	Dent Passage in a southerly direction

Course 14
16.5 nm approx.



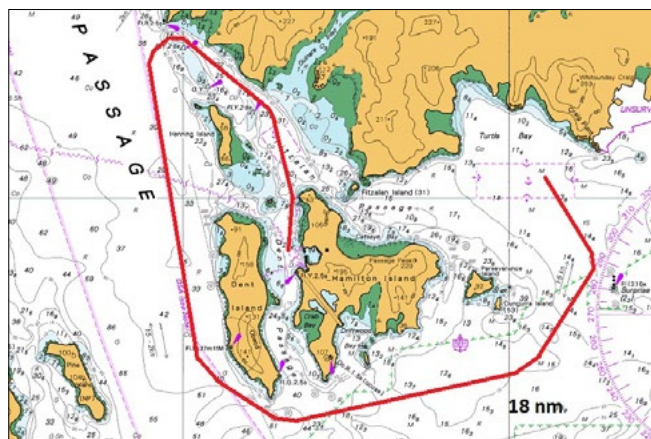
Course Mark	Required Side
Starting line	Dent Passage in a northerly direction
White Rock	Starboard
Dent Laid Mark	Starboard
Finishing Line	Dent Passage in a southerly direction

Course 15
11.6 nm approx.



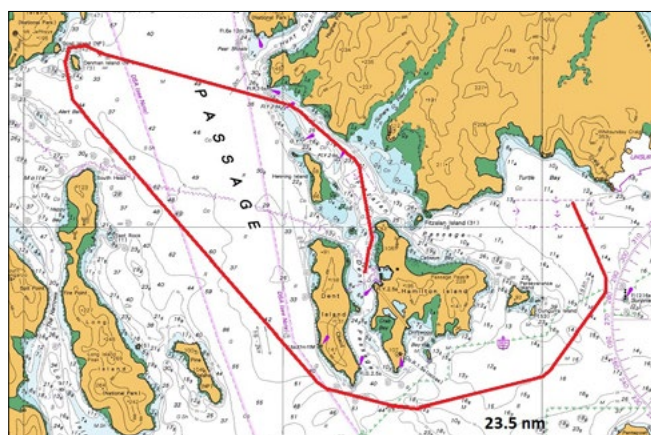
Course Mark	Required Side
Starting line	Dent Passage in a northerly direction
Henning Island	Starboard
Yellow Special Mark 1	Starboard
Yellow Special Mark 2	Starboard
Dent Laid Mark	Starboard
Yellow Special Mark 2	Starboard
Dent Laid Mark*	Starboard
Finishing Line	Dent Passage in a southerly direction

Course 16
18.0 nm approx.



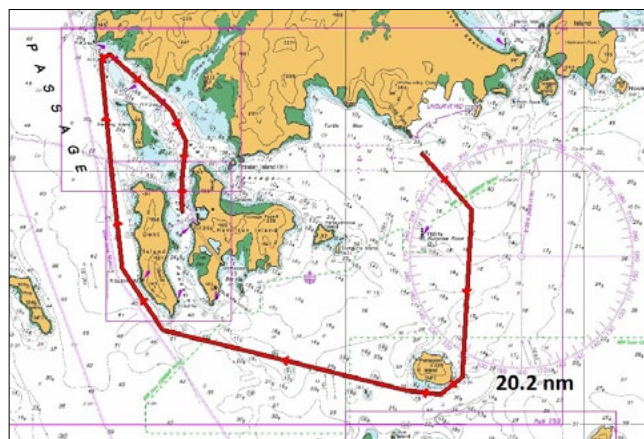
Course Mark	Required Side
Starting line	Eastern Starting Line
Laid Mark	As described in A 4
Dungurra Island*	Starboard
Dent Island	Starboard
Yellow Special Purpose Mark 1	Starboard
Yellow Special Purpose Mark 2	Starboard
Dent Laid Mark*	Starboard
Finishing Line	Dent Passage in a southerly direction

Course 17
23.5 nm approx.



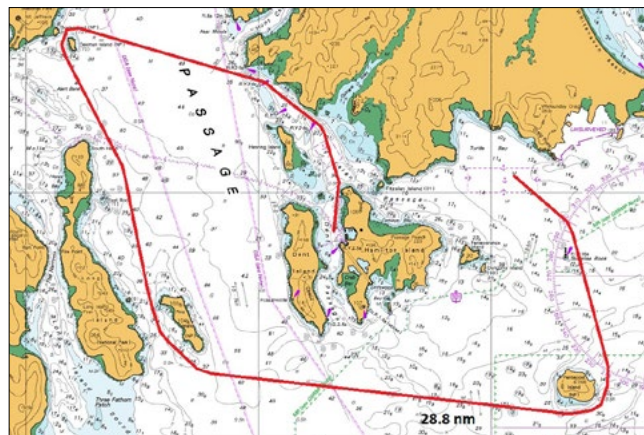
Course Mark	Required Side
Starting line	Eastern Starting Line
Laid Mark	As described in A 4
Dungurra Island*	Starboard
Dent Island	Starboard
Denman Island	Starboard
Yellow Special Purpose Mark 1	Starboard
Yellow Special Purpose Mark 2	Starboard
Dent Laid Mark*	Starboard
Finishing Line	Dent Passage in a southerly direction

Course 18
20.2 nm approx.



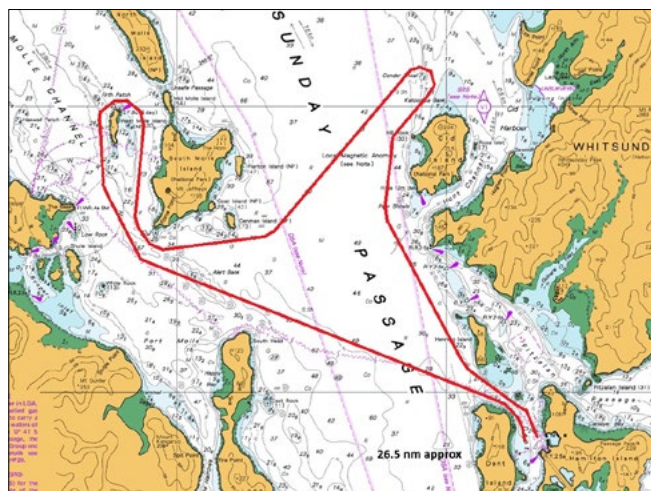
Course Mark	Required Side
Starting line	Eastern Starting Line
Laid Mark	As described in A 4
Pentecost Island	Starboard
Dent Island	Starboard
Yellow Special Purpose Mark 1	Starboard
Yellow Special Purpose Mark 2	Starboard
Dent Laid Mark*	Starboard
Finishing Line	Dent Passage in a southerly direction

Course 19
28.8 nm approx.



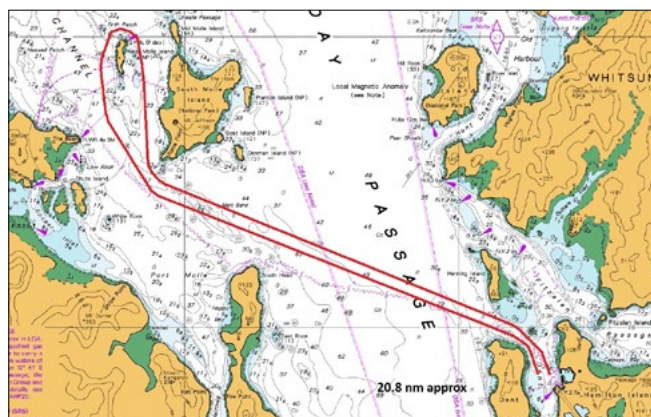
Course Mark	Required Side
Starting line	Eastern Starting Line
Laid Mark	As described in A 4
Pentecost Island	Starboard
Pine Island	Starboard
Denman Island	Starboard
Yellow Special Purpose Mark 1	Starboard
Yellow Special Purpose Mark 2	Starboard
Dent Laid Mark*	Starboard
Finishing Line	Dent Passage in a southerly direction

Course 20
26.5 nm approx.



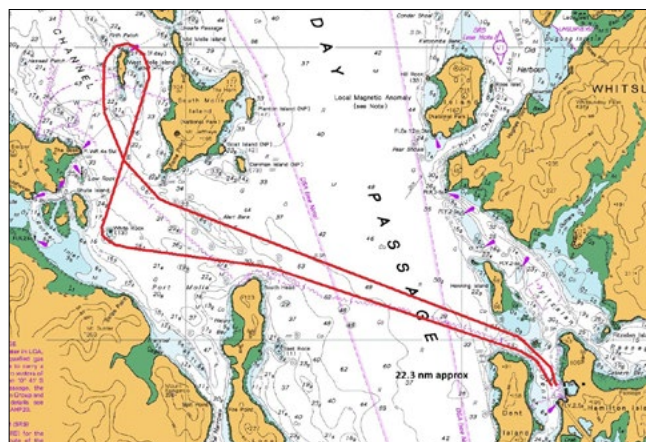
Course Mark	Required Side
Starting line	Dent Passage in a northerly direction
South Molle Island	Starboard
Daydream Island	Starboard
South Molle Island	Port
Denman Island	Port
Condor Laid Mark	Starboard
Henning Island	Port
Dent Laid Mark	Starboard
Finishing Line	Dent Passage in a southerly direction

Course 21
20.8 nm approx.



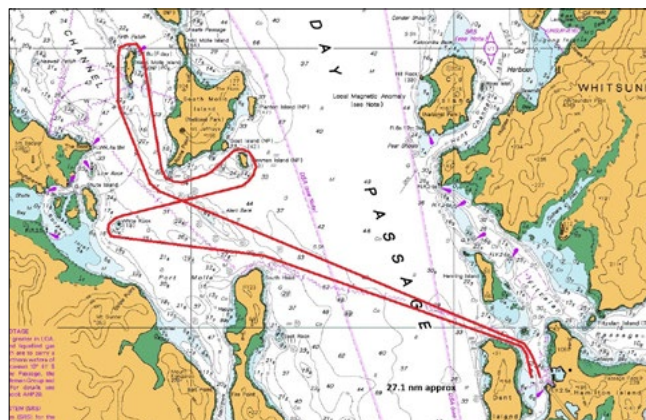
Course Mark	Required Side
Starting line	Dent Passage in a northerly direction
South Molle Island	Starboard
Daydream Island	Starboard
South Molle Island	Port
Henning Island	Port
Dent Laid Mark	Starboard
Finishing Line	Dent Passage in a southerly direction

Course 22
22.3 nm approx.



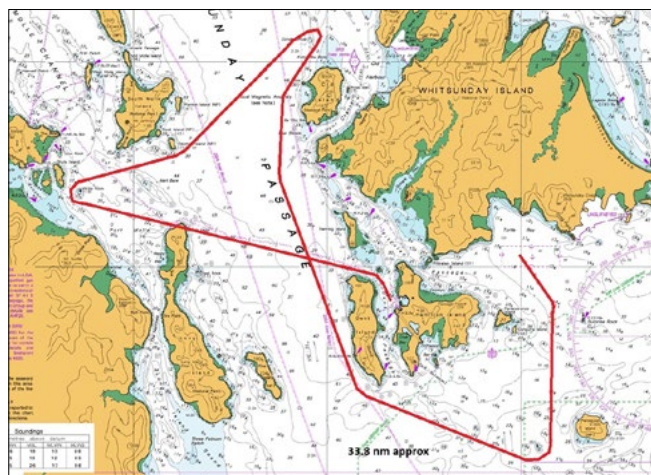
Course Mark	Required Side
Starting line	Dent Passage in a northerly direction
South Molle Island	Starboard
Daydream Island	Starboard
White Rock	Port
Henning Island*	Port
Dent Laid Mark	Starboard
Finishing Line	Dent Passage in a southerly direction

Course 23
27.1 nm approx.



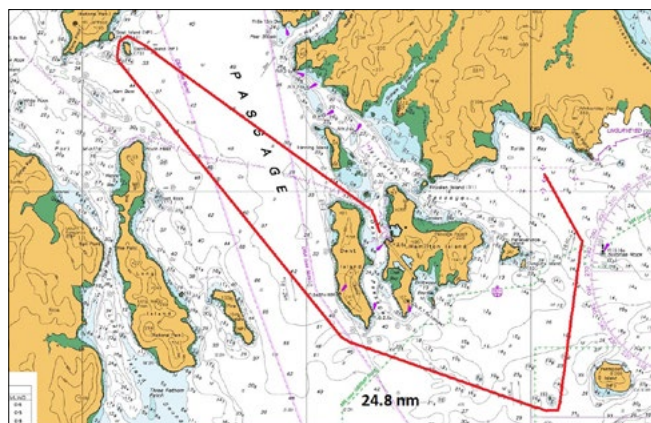
Course Mark	Required Side
Starting line	Dent Passage in a northerly direction
South Molle Island	Starboard
Daydream Island	Starboard
South Molle Island	Port
Denman Island	Starboard
White Rock	Port
Henning Island*	Port
Dent Laid Mark	Starboard
Finishing Line	Dent Passage in a southerly direction

Course 24
33.8 nm approx.



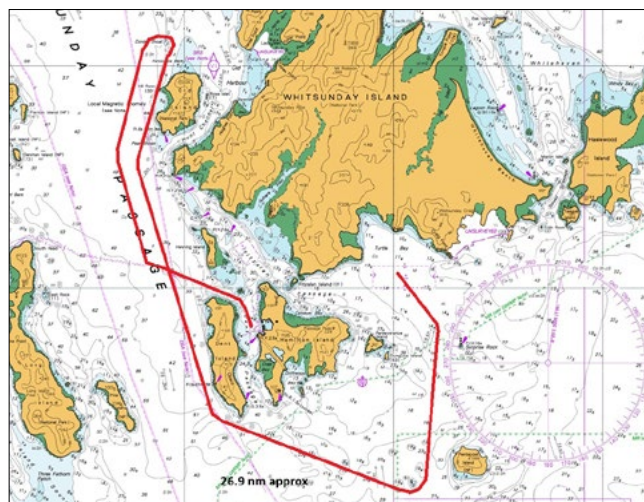
Course Mark	Required Side
Starting line	Eastern Starting Line
Laid Mark	As described in A 4
Isolated Rock	Starboard
Dent Island	Starboard
Condor Laid Mark	Port
Denman Island	Starboard
White Rock	Port
Dent Laid Mark*	Starboard
Finishing Line	Dent Passage in a southerly direction

Course 25
24.8 nm approx.



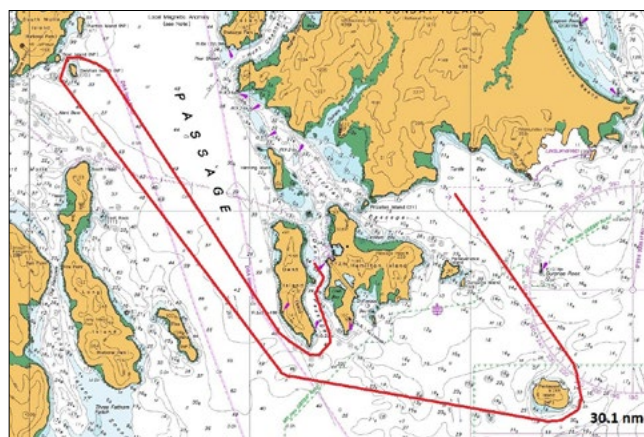
Course Mark	Required Side
Starting line	Eastern Starting Line
Laid Mark	As described in A 4
Isolated Rock	Starboard
Dent Island	Starboard
Denman Island	Starboard
Dent Laid Mark*	Starboard
Finishing Line	Dent Passage in a southerly direction

Course 26
26.9 nm approx.



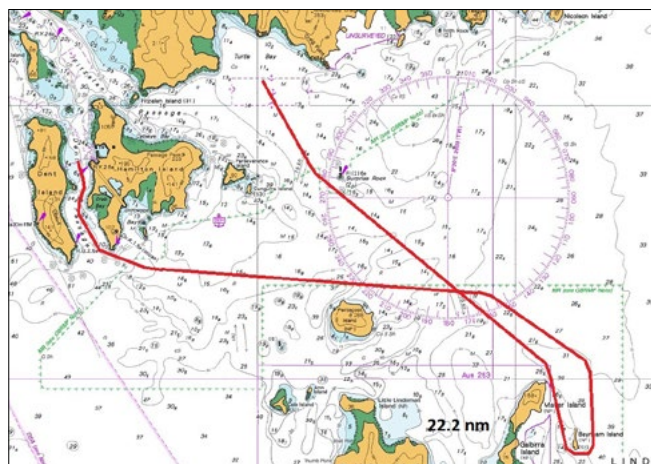
Course Mark	Required Side
Starting line	Eastern Starting Line
Laid Mark	As described in A 4
Isolated Rock	Starboard
Dent Island	Starboard
Condor Laid Mark	Port
Dent Laid Mark*	Starboard
Finishing Line	Dent Passage in a southerly direction

Course 27
30.1 nm approx.



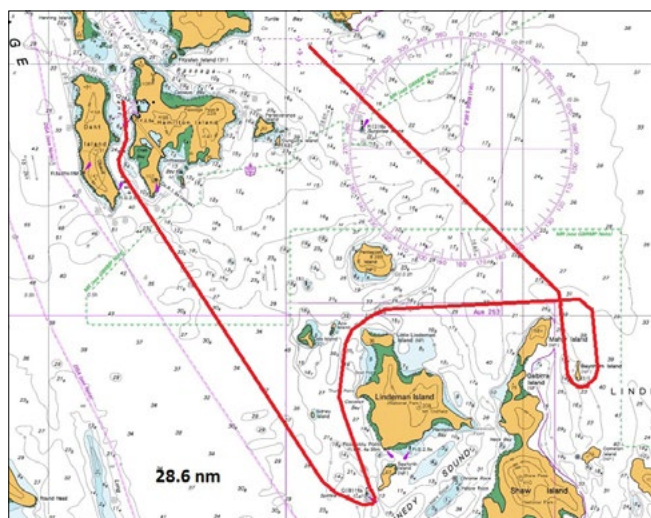
Course Mark	Required Side
Starting line	Eastern Starting Line
Laid Mark	As described in A 4
Pentecost Island	Starboard
Dent Island	Starboard
Denman Island	Starboard
Dent Island	Port
Finishing Line	Dent Passage in a northerly direction

Course 28
22.2 nm approx.



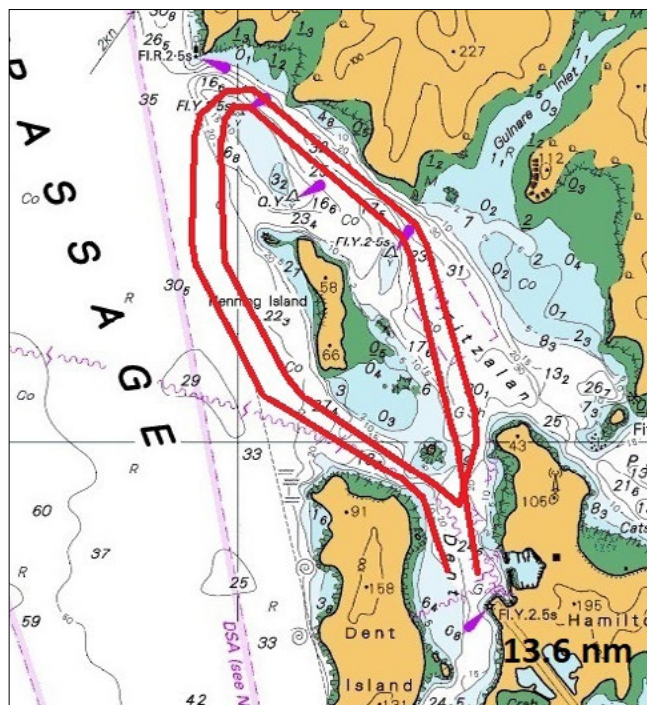
Course Mark	Required Side
Starting line	Eastern Starting Line
Laid Mark	As described in A 4
Baynham Island	Port
Finishing Line	Dent Passage in a northerly direction

Course 29
28.6 nm approx.



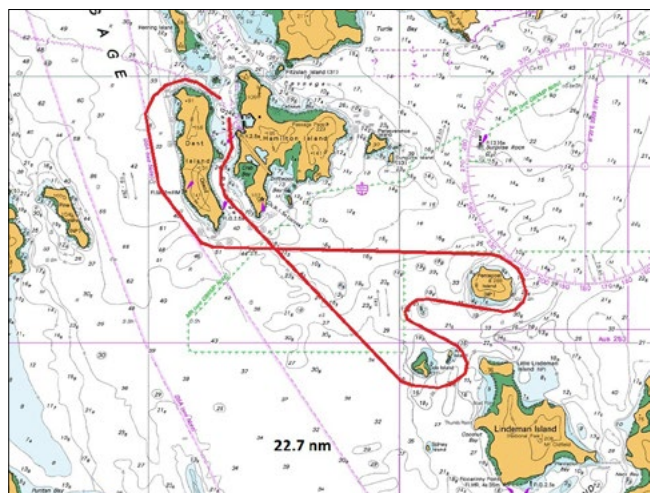
Course Mark	Required Side
Starting line	Eastern Starting Line
Laid Mark	As described in A 4
Baynham Island	Port
Lindeman Island	Port
Spitfire Laid Mark	Starboard
Finishing Line	Dent Passage in a northerly direction

Course 30
13.6 nm approx.



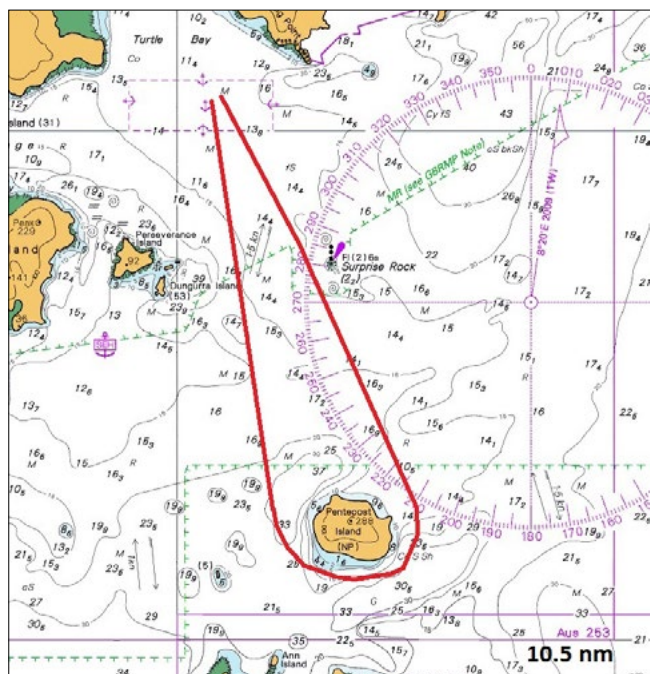
Course Mark	Required Side
Starting line	Dent Passage in a northerly direction
Henning Island	Starboard
Yellow Special Mark 1	Starboard
Yellow Special Mark 2	Starboard
Dent Laid Mark	Starboard
Yellow Special Mark 1	Starboard
Yellow Special Mark 2	Starboard
Dent Laid Mark*	Starboard
Finishing Line	Dent Passage in a southerly direction

Course 31
22.4 nm approx.



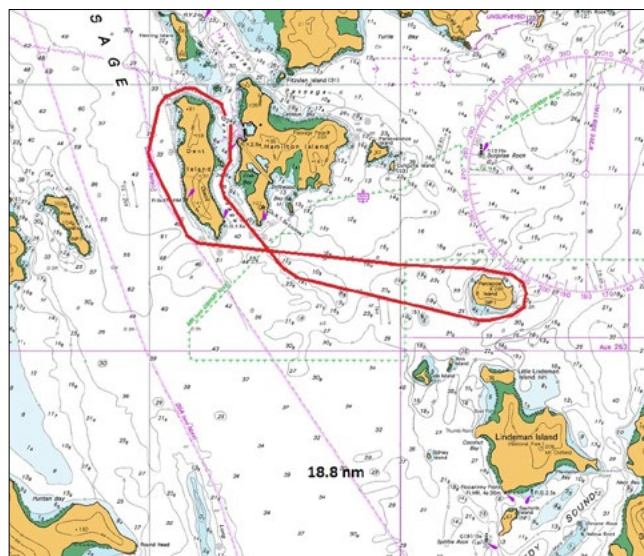
Course Mark	Required Side
Starting line	Dent Passage in a northerly direction
Dent Island	Port
Pentecost Island	Starboard
Isolated Rock	Port
Ann Island	Starboard
Cole Island	Starboard
Finishing Line	Dent Passage in a northerly direction

Course 32
10.5 nm approx.



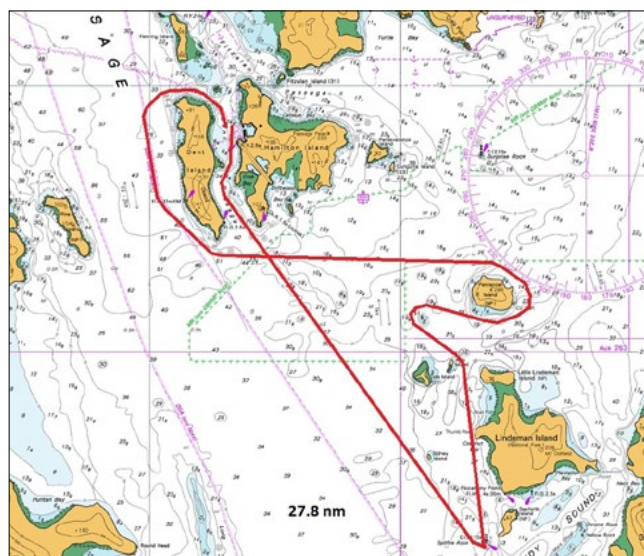
Course Mark	Required Side
Starting line	Eastern Starting Line
Laid Mark	As described in A 4
Pentecost Island	Starboard
Finishing Line	Race committee vessel as per 17.3

Course 33
18.8 nm approx.



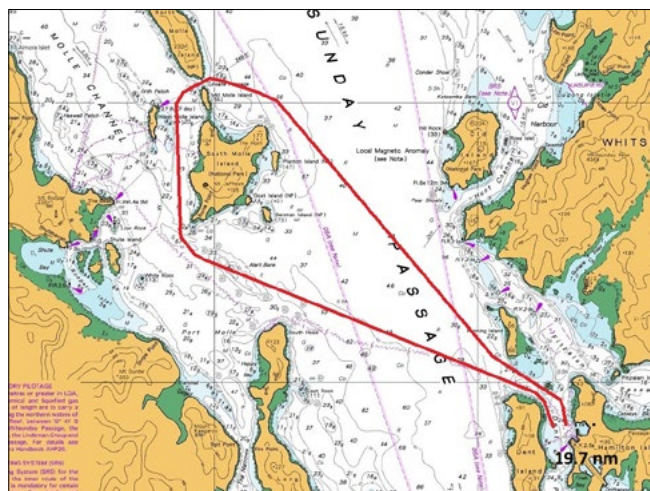
Course Mark	Required Side
Starting line	Dent Passage in a northerly direction
Dent Island	Port
Pentecost Island	Starboard
Finishing Line	Dent Passage in a northerly direction

Course 34
27.8 nm approx.



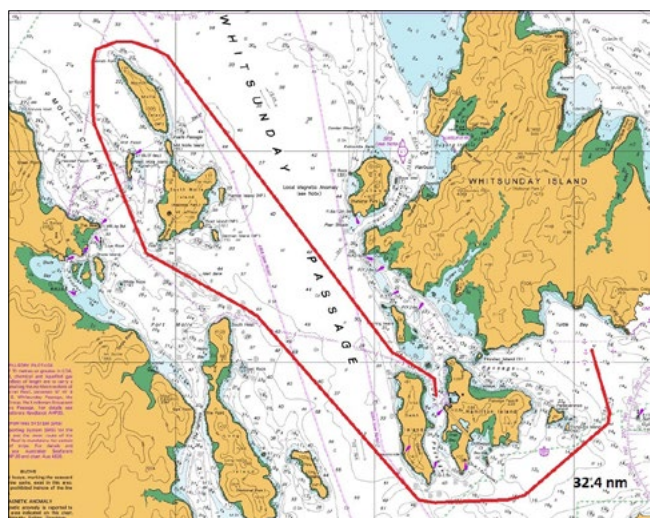
Course Mark	Required Side
Starting line	Dent Passage in a northerly direction
Dent Island	Port
Pentecost Island	Starboard
Isolated Rock	Port
Spitfire Laid Mark	Starboard
Finishing Line	Dent Passage in a northerly direction

Course 35
19.7 nm approx.



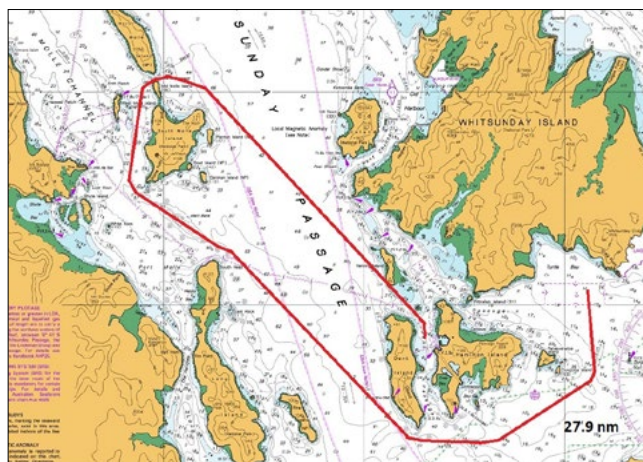
Course Mark	Required Side
Starting line	Dent Passage in a northerly direction
South Molle Island	Starboard
Mid Molle Island	Starboard
Dent Laid Mark	Starboard
Finishing Line	Dent Passage in a southerly direction

Course 37
32.4 nm approx.



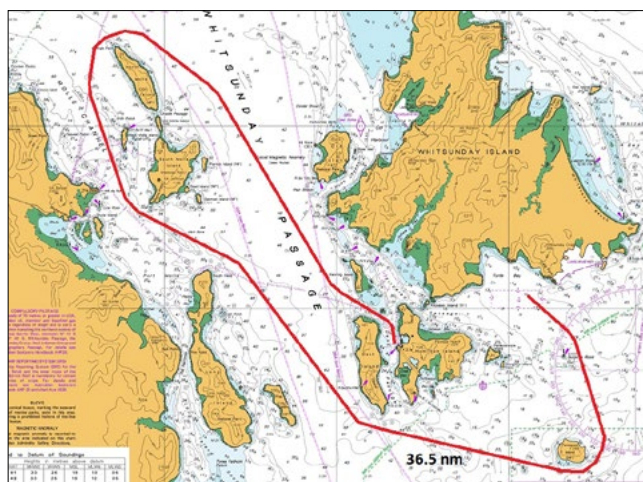
Course Mark	Required Side
Starting line	Eastern Starting Line
Laid Mark	As described in A 4
Dungurra Island*	Starboard
Dent Island	Starboard
South Molle Island	Starboard
North Molle Island	Starboard
Dent Laid Mark	Starboard
Finishing Line	Dent Passage in a southerly direction

Course 38
27.9 nm approx.



Course Mark	Required Side
Starting line	Eastern Starting Line
Laid Mark	As described in A 4
Dungurra Island*	Starboard
Dent Island	Starboard
South Molle Island	Starboard
Mid Molle Island	Starboard
Dent Laid Mark	Starboard
Finishing Line	Dent Passage in a southerly direction

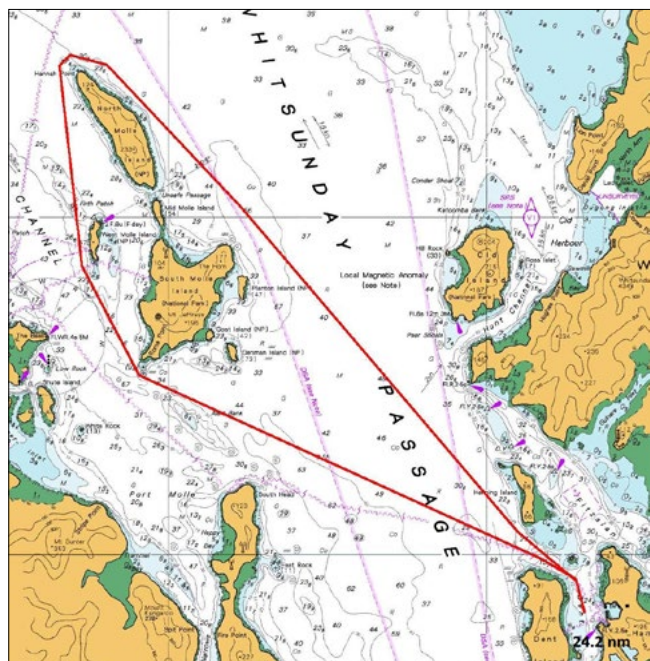
Course 39
36.5 nm approx.



Course Mark	Required Side
Starting line	Eastern Starting Line
Laid Mark	As described in A 4
Pentecost Island	Starboard
Dent Island	Starboard
South Molle Island	Starboard
North Molle Island	Starboard
Dent Laid Mark	Starboard
Finishing Line	Dent Passage in a southerly direction

Course 40

19.7 nm approx.

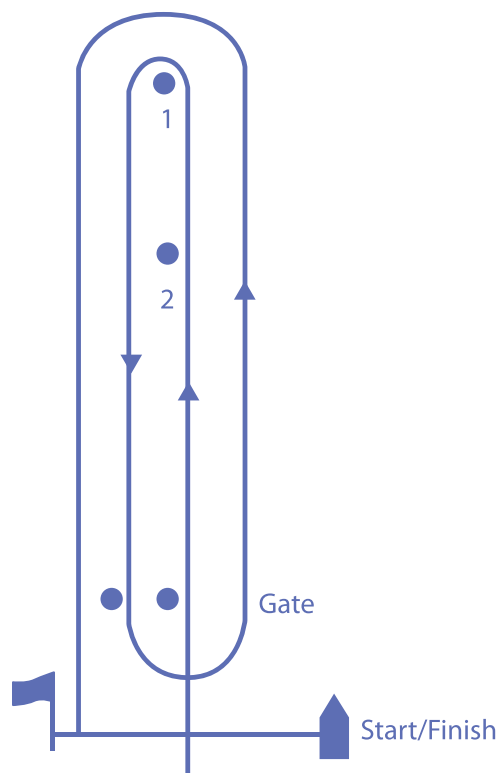


Course Mark	Required Side
Starting line	Dent Passage in a northerly direction
South Molle Island	Starboard
North Molle Island	Starboard
Dent Laid Mark	Starboard
Finishing Line	Dent Passage in a southerly direction

WINDWARD / LEEWARD COURSES

- A 6 The following course descriptions lists the order each mark is be rounded.
- A 7 All single marks (not the gate) shall be rounded to PORT. If only one gate mark is set, boats shall round that mark to port.
- A 8 The course to be sailed for each division will be signalled by a numeral board displayed from the race committee vessel. The course to be sailed may also be broadcast on the designated course VHF Channel.
- A 9 A board displaying the approximate compass bearing from the race committee vessel to Mark 1 and Mark 2 will be displayed from the race committee vessel.
- A 10 Mark 1 and Mark 2 will be laid to windward of the starting line.
The gate will be laid approximately 100 metres to windward of the starting line. (Note: The gate may be laid after the starting signal).
- A 11 For a change of course the race committee will move the original mark (or marks) or will lay a new mark (or marks) identical to the original at the new position. Any subsequent marks may be relocated to maintain the original course configuration.
- A.12 Mark 2 will only be laid if required.

Course Mark	Mark Description
Start / Finish Mark	Yellow inflatable buoy
Mark 1	Yellow inflatable buoy
Mark 2	White inflatable buoy
Gate	White inflatable buoys



Course Signal	Course to Sail
1	Start – 1 – Finish
2	Start – 1 – Gate – 1 – Finish
3	Start – 1 – Gate – 1 – Gate – 1 – Finish
4	Start – 2 – Finish
5	Start – 2 – Gate – 2 – Finish
6	Start – 2 – Gate – 2 – Gate – 2 – Finish

IMPORTANT RACE WEEK COMMUNICATIONS

EMERGENCY PROCEDURES AND COMMUNICATIONS

On Island Emergencies

From an island phone: 000

Inform operator of known relevant details and be guided by the operator. Relevant details include location of incident and number of injured persons etc. The trained operator will assess the information and notify the appropriate agency.

Off Island Emergencies

Yacht returning to Hamilton Island: 000

Inform operator of known relevant details and be guided by the operator. Relevant details include location of incident and number of injured persons etc. The operator will coordinate the most appropriate emergency response.

RETURN TO EITHER A1 OR A2 JETTY.

Off Island Emergencies

Yacht not returning to Hamilton Island heading elsewhere: 000

Inform operator of known relevant details and be guided by the operator. Relevant details include location of incident and number of injured persons etc. The operator will coordinate the most appropriate emergency response.

Off Island Emergencies

Out of mobile range: VHF channel 16 or 68

Contact Hamilton Island Marina Office and inform marina staff of all known details of the incident. Marina Office staff will coordinate the most appropriate emergency response.

ALL VESSELS WITH EMERGENCIES ON BOARD ARE TO GO TO A1 AND A2 JETTIES.

IMPORTANT RACE WEEK NUMBERS

Emergency (from landline).....000

Emergency (from mobile)..... 112

Marina Office..... 07 4946 8353

Medical Centre..... 07 4804 5688

Race Week Office..... 07 4946 8646 (EXT 68646)

Race Week Office Enquiries..... raceoffice@hamiltonisland.com.au

Local Marine Industry

Hamilton Island Shipyard/Chandlery.....07 4946 8138

North Sails..... 0434 955 112

Airlie Sails.....07 4946 1125

Hawkes Boatyard..... 07 4946 6700

Shute Harbour Slipway/Chandlery..... 07 4948 8239

Coral Sea Marina.....07 4946 2400

Whitsunday Sailing Club.....07 4946 6138

All Marine Services.....07 4946 5411

Quadrant Marine Chandlery..... 07 4946 4033

ENZED (Hydraulics)..... 07 4946 4470

Travel

Cruise Whitsundays.....07 4846 7000

Jetstar..... 13 15 38

Virgin Australia.....13 67 89

Qantas.....13 13 13

Government

Mackay Customs.....07 4965 7100

Water Police..... 07 4967 8888

Resort

Hamilton Island Reservations..... 137 333

Tour Desk..... 1300 659 133

Resort Facilities

Resort Buggy Hire..... 07 4946 8263

Explore.....07 4946 9664

Pharmacy.....07 4946 9053

Post Office.....07 4946 9462

Hamilton Island Air.....07 4969 9599



HAMILTON ISLAND APP



Scan to download the Hamilton Island App, or visit the App Store or Google Play. The App is the best way to make restaurant bookings and also includes an activities calendar, transport timetables and live weather updates.

OTHER INFORMATION

TIDE PREDICTIONS

Times and heights of high and low waters August - 2025

Sunday 17		Monday 18		Tuesday 19		Wednesday 20		Thursday 21		Friday 22		Saturday 23	
Time	Height	Time	Height	Time	Height	Time	Height	Time	Height	Time	Height	Time	Height
		0104	0.98	0203	0.77	0252	0.61	0335	0.50	0413	0.50	0449	0.51
0515	2.32	0635	2.31	0740	2.39	0833	2.50	0919	2.60	1001	2.66	1041	2.68
1124	0.55	1228	0.47	1326	0.38	1417	0.29	1502	0.24	1543	0.26	1620	0.36
1828	3.35	1928	3.61	2020	3.81	2105	3.92	2147	3.94	2225	3.86	2301	3.70
Sunset													
1752		1752		1752		1752		1753		1753		1754	

TIDAL FLOW

Sunday 17th	North until 11.24 am then south until 6.28 pm
Monday 18th	North until 12.28 pm then south until 7.28pm
Tuesday 19th	North until 1.26 pm then south until 8.20 pm
Wednesday 20th	Lay day (no tidal flow in the resort pools)
Thursday 21st	North until 3.02 pm then south rest of afternoon
Friday 22nd	North until 3.43 pm then south rest of afternoon
Saturday 23rd	North until 4.20 pm then south rest of afternoon

JURY MEMBERS

Australian Sailing has approved the following International Jury as appointed by Hamilton Island Yacht Club (organising authority) in accordance RRS 70.5(b).

Richard Slater, Chair	(IJ)	NSW (Australia)
Philippe Mazard	(IJ)	France
Russell Green	(IU)	New Zealand
Jamie Sutherland	(IJ)	New Zealand
Mark Gallagher	(NJ)	QLD, Australia

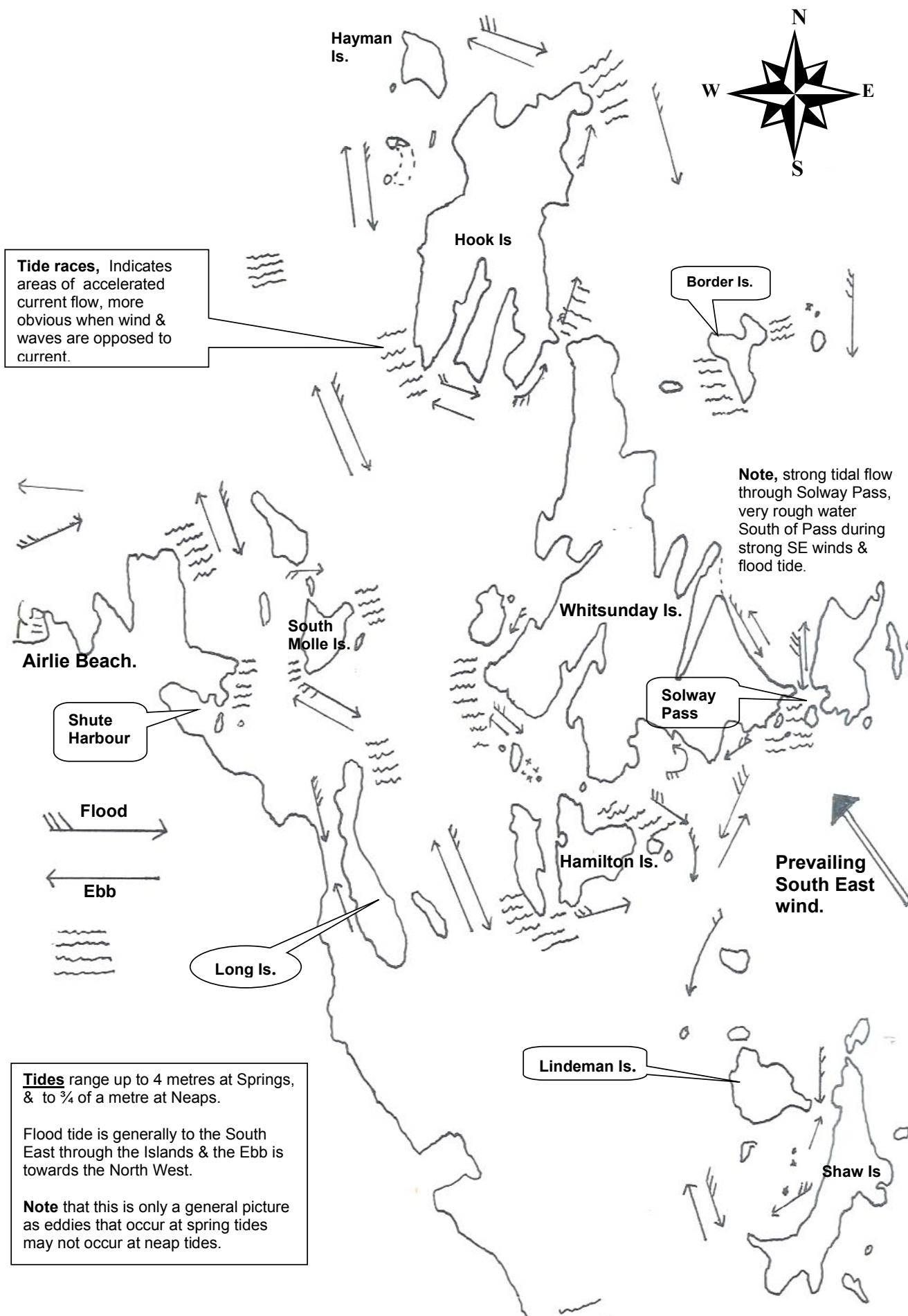
WEATHER

Experienced weather guru, and yachtsman, Ken Batt, will provide detailed weather information to competitors each day, which will include an overall synopsis for the race area, temperature and sea conditions, a detailed wind forecast and outlooks for the days ahead. Call down to the Race Office at Hamilton Island Yacht Club each morning to collect your copy.

MANAGEMENT TEAM

Denis Thompson (IRO)	Regatta Director
Greg Sinclair (NRO)	Race Officer
Mark Dingley (NRO)	Race Officer
Jenni Birdsall	Timing / Computer
Sharon Henwood	Office
Richard Slater (IJ) AUS	Jury Chairman
Philippe Mazard (IJ) FRA	Jury
Russell Green (IU) NZL	Jury
Jamie Sutherland (IJ) NZL	Jury
Mark Gallagher (NJ) AUS	Jury
Jack Buchan (NRO)	Marks / Signals
Jess Campbell	Signals / Scribe
Robyn Tames (NRO)	Signals / Scribe
Elaine Fowler (NRO)	Timer / Scribe
Geoff Campbell	Marks / Signals
Matthew Dickinson	Marks/ Scribe
Nick Campbell	Marks/ Signals
Brian McMahon	Marks / Bosun
Lucas Malige (RRO) FRA	Marks/ Signals
Kylie Flemming	Signals / Scribe
Paul Borel	Marks / Scribe
Daniel Richardson	Marks / Scribe
Michael Spies	Handicap Chairman / Trophies

WHITSUNDAY TIDAL FLOW CHART



Drawn by and reproduced with the permission of John Graham.

SHALLOW WATER WARNING BUOY

Yellow triangle buoys may be laid to mark shallow areas of Dent Passage. These buoys are not marks of any course and are only intended to remind yachts that there is shallow water in the vicinity.



Department of Transport and Main Roads - Maritime Safety Queensland

NOTICE TO MARINERS



318 of 2025

Issued by Mackay Maritime Region on 11 July 2025

Area: Whitsundays pilotage area
Locality: Hamilton Island airport runway
Activity: Flight path caution to vessels

Mariners are advised that:

Vessels operating in Dent Passage between Titan Island and the Hamilton Island airstrip are advised that there are frequent aircraft movements in this area 24 hours a day, seven days a week. Vessels with an overall height greater than eight metres are advised to keep clear of the flight path zone during aircraft movements. These vessels if entering Hamilton Island marina are advised to keep to the eastern side of Dent passage and are not to stop in the aircraft zone (refer attached chartlet). This restriction also applies to the southern end of the runway in Driftwood Bay.

Mariners should navigate with caution in the area.

Refer to notice: none

Cancel notice: none

AUS charts affected: 252, 253

ENC Cells affected: AU5HTI01

Latitude and longitude positions are on WGS84 horizontal datum and are compatible with GDA2020 datum.

For further information about this notice, please contact:

The Mackay Regional Harbour Master's office:

Phone 07 4944 3700

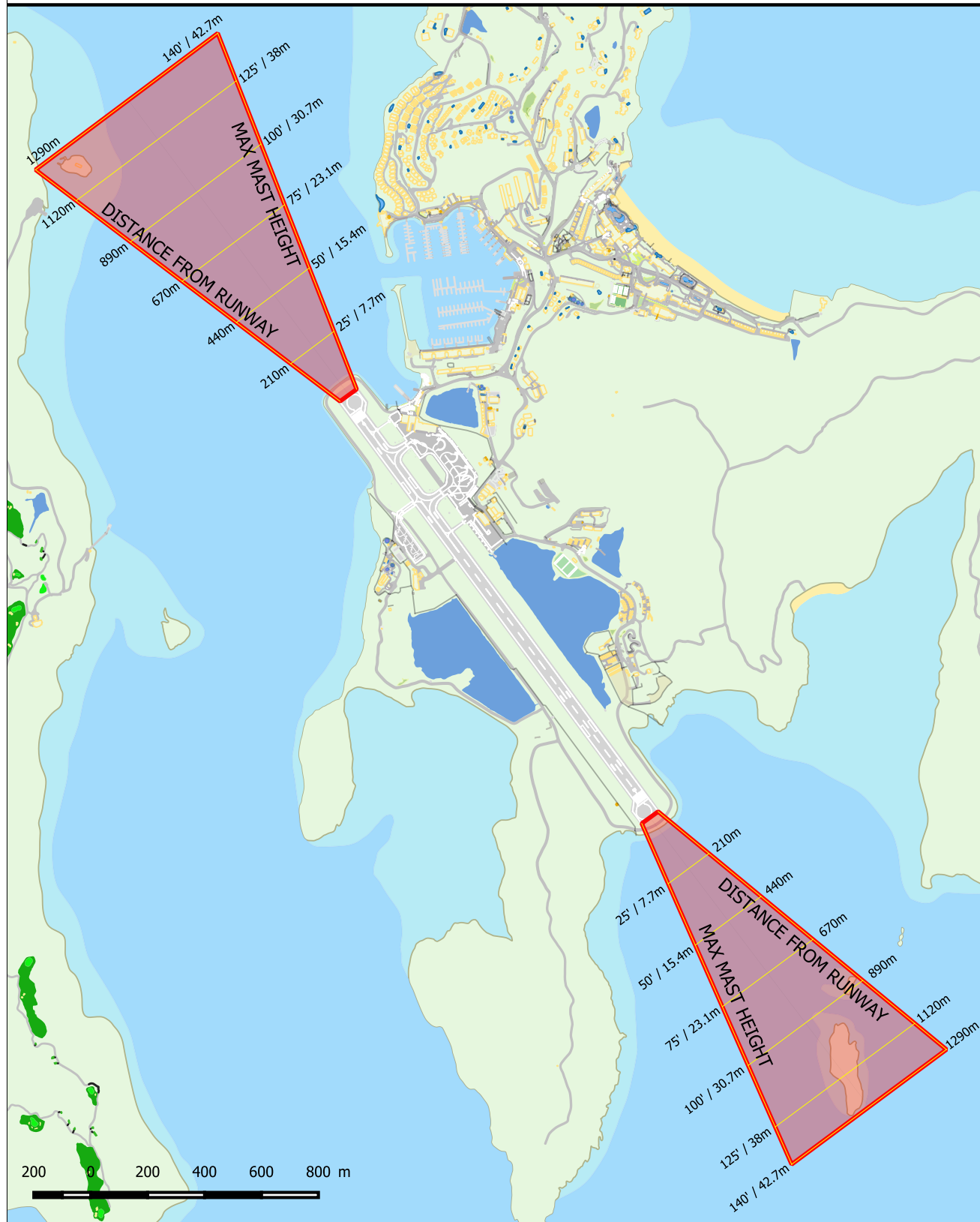
Email: vtshaypoint@msq.qld.gov.au

Notice authorised by: Regional Harbour Master (Mackay) - Maritime Safety Queensland

NOTICE TO MARINERS

BE AWARE OF AIRCRAFT MOVEMENTS AT HAMILTON ISLAND

FOR SAFETY REASONS, ALL VESSELS MUST REMAIN CLEAR OF THE AIRCRAFT APPROACH/DEPARTURE PATH. ENSURE YOUR VESSEL'S MAST HEIGHT DOES NOT INFRINGE UPON AIRCRAFT OBSTACLE CLEARANCE ZONES.



SAILORS PLEASE BE AWARE OF MEDIA CRAFTS

During Race Week this year there will be a number of media following the racing both from the water and from the air.

The skippers of the media boats and the pilots of the helicopters will make every effort to make sure they do not interfere with the racing as much as they can. However there may be occasions when they find themselves in a position where the wake from a boat or the down wash from the rotors of the helicopters may briefly affect the racing yachts.

This is sometimes unavoidable and we ask you to understand that they are trying to get the best shots for the media exposure the regatta deserves.

Thank you for your consideration in this matter, we appreciate your help.

AIRCRAFT ARE HAZARDOUS TO YACHTS

Have you ever sailed in the dirty air from another boat? Try sailing in the dirty air from an Aircraft. Wake turbulence generated from the wind of an aircraft can cause sudden and violent wind changes (up to 80 feet/sec), possibly resulting in equipment damages or injuries.

Vortices have enough energy to create multiple whirlwinds lifting water from the surface. Vortices can exist for in excess of 3 minutes.

Jet blast from the aircraft engines can also be dangerous. Full power is required for take off on Hamilton Island's short runway. The Airbus A320 produces 26,500 lbs of thrust per engine. The thrust can carry aft of the engine for at least 1150'/348m where the wind gusts will be in excess of 40 knots.

YACHTS ARE HAZARDOUS TO AIRCRAFT

During landing, a Jetstar, Airbus A320 Aircraft can weigh up to 66,000kg and travels at an airspeed of 140 knots. Our normal approach path is a 3-degree slope. For Jetstar to have the required obstacle clearance above your mast, plot your mast height against the required distance from the runway.

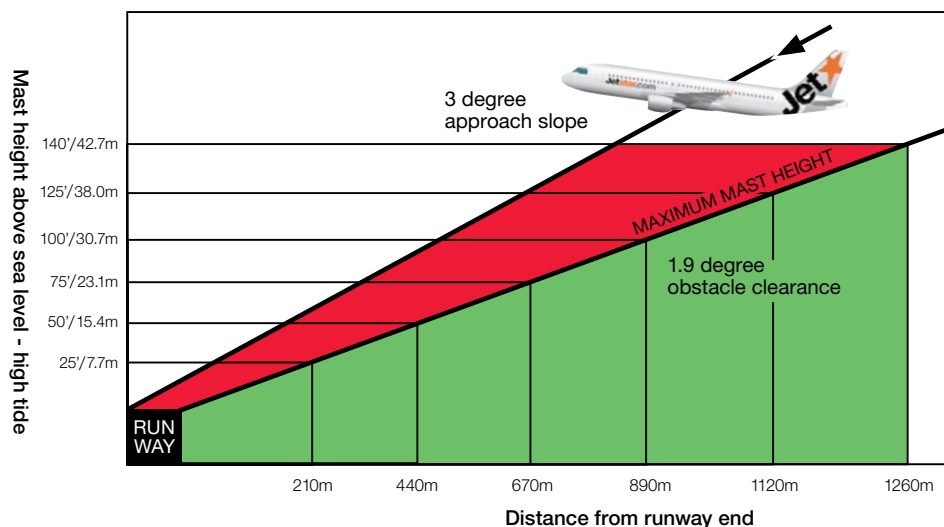
Conducting a missed approach can present a dangerous situation. A jet aircraft can take up to 6 seconds to start climbing. During this time it will travel over 1400 feet (431 metres) and descend about 50 feet.

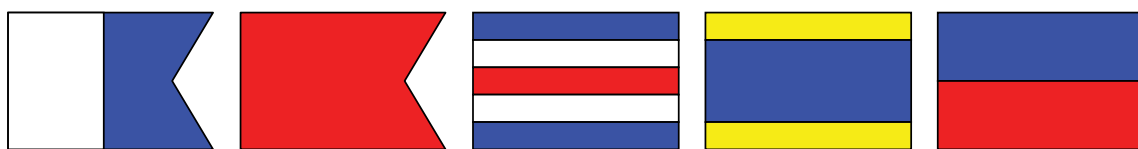
Mast height (ft)	Height (m)	Distance out from runway
30	9.1	250m
40	12.1	340m
50	15.4	440m
60	18.4	530m
70	21.4	620m
80	24.4	710m
90	27.4	800m
100	30.7	890m
110	33.7	990m
120	36.7	1080m
130	39.7	1170m
140	42.7	1260m

Every boat has a different limit. When sailing the Dent Passage, ensure the runway approach path is clear. Check your mast height against the table and know your distance limit before you sail out.



This information is presented by Jetstar Airways.





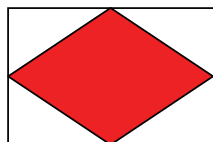
A alpha

B bravo

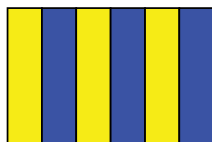
C charlie

D delta

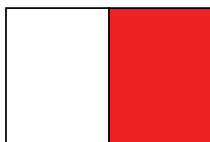
E echo



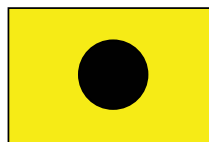
F foxtrot



G golf



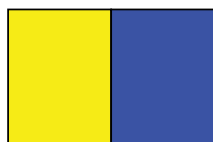
H hotel



I india



J juliet



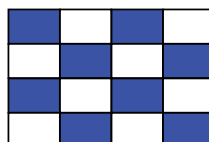
K kilo



L lima



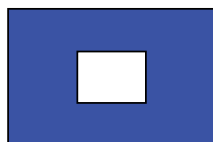
M mike



N november



O oscar



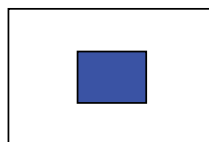
P papa



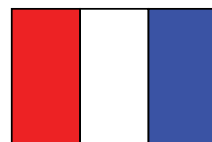
Q quebec



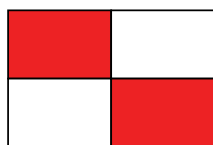
R romeo



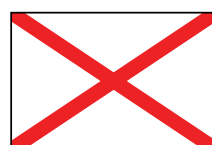
S sierra



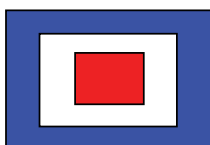
T tango



U uniform



V victor



W whiskey



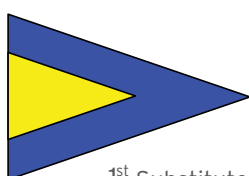
X xray



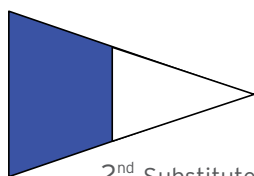
Y yankee



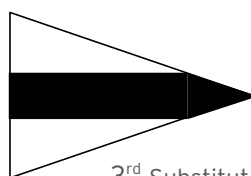
Z zulu



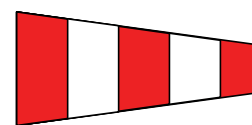
1st Substitute



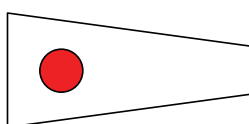
2nd Substitute



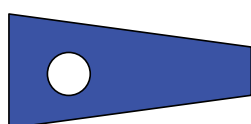
3rd Substitute



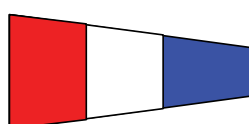
Answering Penant



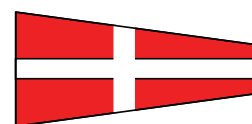
1



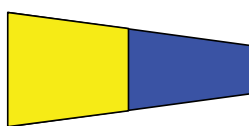
2



3



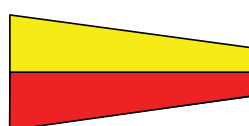
4



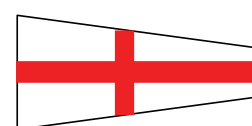
5



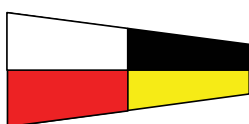
6



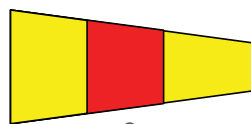
7



8



9



0

RULES FOR WATCHING MARINE MAMMALS

The Whitsundays is a designated Whale Protection Area, and Whale Heritage Site, specifically recognising its importance as a birthing and calving ground for humpback whales. As you sail amidst the migrating humpback whales, please keep your distance and stay vigilant to ensure the safety and wellbeing of both our competitors and these majestic mammals.

There are a number of rules that are in place to make sure marine mammals can live naturally in Queensland waters without being disturbed, while at the same time allowing us to watch them in safety.

Legal requirements are set out in the Great Barrier Reef Marine Park Regulations 2019 and are complemented under the Environment Protection and Biodiversity Conservation Act 1999.

Approach distances for whales and dolphins

Approach distances reduce the risk of disturbing whales or dolphins. They apply to boats (including kayaks and paddle boards), prohibited vessels (e.g. jet skis and hovercraft), aircraft, remotely piloted aircraft (e.g. drones), helicopters and people who are in the water.

Approach distances for dugongs only apply where a special management declaration has been made.

Approach distances are divided into caution zones and no approach zones.

Caution zones

The caution zone is an area surrounding a whale or dolphin in which boats cannot travel at speeds of more than six knots or speeds that create a wake. The caution zone extends out to 300 metres from a whale, and 150 metres for a dolphin.

No approach zones

Within a caution zone there are areas designated as 'no approach' zones that boats cannot enter. These are the areas closest to an animal and directly in front of and behind an animal. For a whale, the no approach zone surrounds the animal for 300 metres and 500 metres within 30 degrees of the whale's direction of travel - in front and behind. For dolphins, the no approach zone surrounds the animal for 50 metres and extends 150 metres in front of and behind the animal.

Something to think about

A fully loaded semi-trailer weighs 36 tonnes. A fully-grown humpback whale weighs up to 45 tonnes. You wouldn't stand in front of a moving semi-trailer, so why would you put your boat in the way of a whale?

When a marine mammal approaches a boat

If a whale approaches a boat so that the boat is within the caution zone, the operator of the boat must turn its engines off or disengage its gears, or withdraw from the no approach zone at a speed that is less than six knots and doesn't create a wake.

If a dolphin approaches a boat within the caution zone or the no approach zone, a moving boat can continue on its way as long as any change in speed or direction is made gradually in a way that is unlikely to disturb the dolphin, particularly if it is bow riding. The boat may even slow down or stop to watch the dolphin providing it does so in a way that does not disturb it.

When a marine mammal appears disturbed

If a marine mammal shows signs of disturbance (e.g. acting in an aggressive manner, changing its breathing patterns) a boat must withdraw beyond the caution zone at a speed that is not more than six knots so as to not create a wake.

Other situations where specific approach distances apply

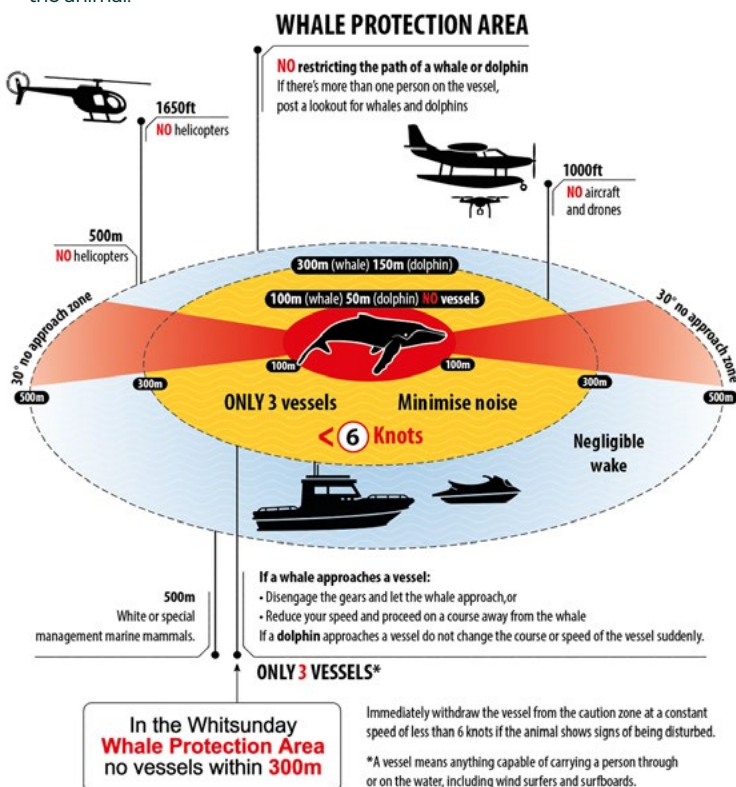
Specific approach distances also apply for the following:

- 'prohibited' vessels (e.g. jet skis and hovercraft): not within 300 metres of a whale or a dolphin
- aircraft: not within 300 metres of a whale or a dolphin
- remotely piloted aircraft (drones): not within 300 metres of a whale or a dolphin
- helicopter: not within 500 metres of a whale or a dolphin, and no hovering above a marine mammal
- a person in or entering the water: not within 100 metres of a whale or within 50 metres of a dolphin.

In the Great Barrier Reef Marine Park and other Commonwealth waters, boats must not come within 300 metres of a whale calf or within 150 metres of a dolphin calf. If a calf appears, causing a boat to be within a no approach zone, the boat should stop with the engines turned off or the gears disengaged, or the boat should withdraw at a slow, constant speed.

Current information on Whale, Dolphin and Dugong protection measures and regulations are available on the GBRMPA [website](#).

The [Whale Protection video](#) is available on the GBRMPA YouTube Channel.



Special Management Declarations

The Special Management Declaration framework gives marine mammals additional protection when it is required and provides a flexible and streamlined management tool for responding quickly to situations where marine mammals are under threat.

Special Management Declarations can be either temporary or permanent and made for animals (special management marine mammal declarations) or areas (special management area declarations) that need to be given greater protection or require additional management.

At present there are two permanent Special Management Declarations. One has been made declaring Migaloo and other humpback whales that are more than 90% white to be special management marine mammals. This means boats and prohibited vessels cannot approach within 500 metres of a predominantly white whale and aircraft cannot approach within 610 metres.

Special Management Declarations can be made in different situations including when:

- an animal is at risk of stranding
- a calf becomes separated from its mother or group
- a female marine mammal is about to, or has recently, given birth
- dugongs need additional protection to help them recover from habitat loss when their usual seagrass feeding area has been damaged or destroyed by a natural disaster.

General boating regulations around marine mammals

Please follow these general rules to protect marine mammals:

- Never restrict the path of a marine mammal or cause it to change direction.
- Never drive a boat into a pod or herd of marine mammals causing it to divide into smaller groups.
- Do not deposit rubbish near, make a loud or sudden noise near, or attempt to touch or feed a marine mammal, unless it is part of an authorised dolphin feeding program.

Report any sick, injured or dead marine mammals or marine turtles by contacting the department on 1300 130 372.

Keep the Sea Clean

We are pleased to announce our new partnership with Eco Barge Clean Seas. Please use the complimentary sacks and island bins to recycle containers, helping to keep our waters clean and our marine wildlife safe.





HERE'S TO
FAIR WINDS,
STEADY HANDS
AND SALTY GRINS



MECCA
COSMETICA

Tanqueray
LONDON DRY GIN



PANERAI



AVPartners*

SAIL RACING



RēVO



Queensland